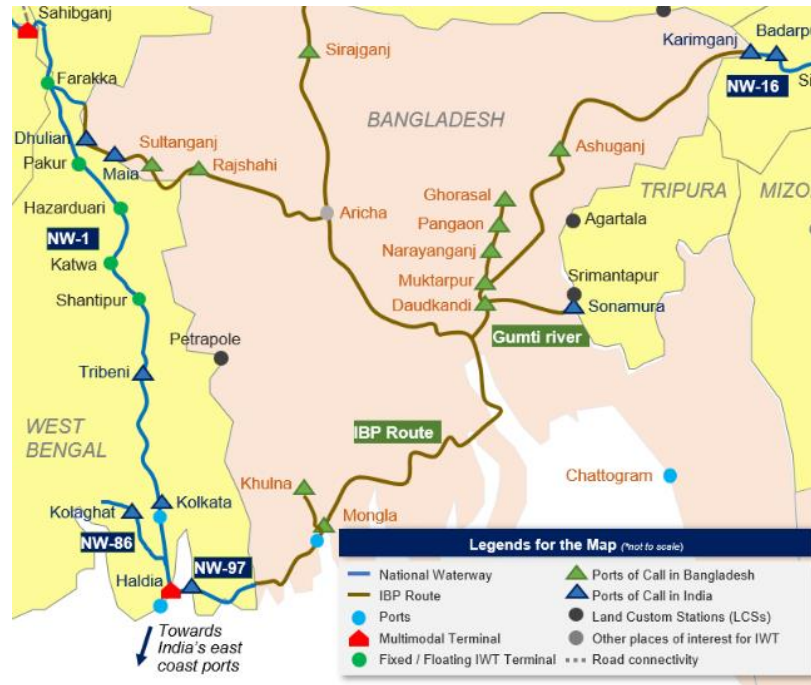
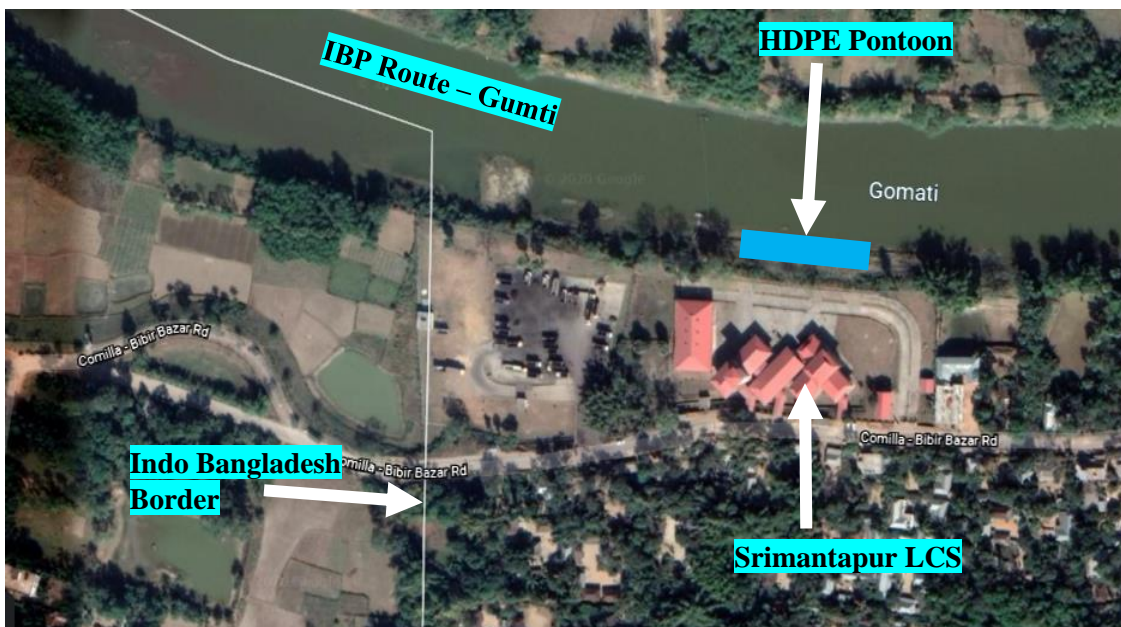


A new route Sonamura – Daudkandi – Sonamura, as IBP route 9 & 10, was added in the 2<sup>nd</sup> addendum to the PIWT&T in May 2020 with Sonamura (Tripura) and Daudkandi (Bangladesh) declared as additional ports of call for vessels plying on IBP routes. The inclusion, of this 93 km stretch of Gumti River in the protocol, was a landmark step to enhance the connectivity of Tripura & adjoining North East States with Mainland India as well as Bangladesh via IWT mode.



On the Indo - Bangladesh border at the bank of River Gumti at Srimantapur (Sonamura), an adjacent Land Custom Station (LCS) already exists with good and new infrastructure facilities such as custom bound truck parking area, customs office, immigration and allied facilities. IWAI has constructed a floating HDPE enveloped MS Steel pontoon adjacent to the Srimantapur LCS at an estimated cost of Rs. 65 lakhs.



This jetty has the potential to attract small haul trans-boundary trade including commodities like bagged cement, horticulture, consumer products and other local goods transported via road between India and Bangladesh. Shippers and traders can avail adjacent facilities of the LCSs of Srimantapur and Bibir Bazaar in India and Bangladesh respectively. Such localized trade supported by physical and regulatory infrastructure will provide employment opportunities to the local population and riverine communities. This jetty is also been developed as a multi-purpose jetty to support movement of passengers on ferries between the two countries. This jetty can further be upgraded with increase in demand of cargo as well passengers in the coming years.

