

MEMBERS OF THE AUTHORITY

		Telephone No.	Fax No.
Chairman	Shri Rahul Sarin, IAS Chairman, IWAI (From 14-11-05 to 12-04-06)	—	—
	Shri S. B. Mathur, IAS Chairman, IWAI (From 09-05-2006 to till date)	0120-2543972	0120-2543973
Vice-Chairman	Shri Susheel Kumar, IAS Vice-Chairman (From 31-03-2006 to till date)	0120-2544009	0120-2544009
Member	Sh. C. Balakrishnan, IAS Additional Secretary & Financial Advisor Deptt. of Shipping	011-23710140	011-23715195
Member	Dr. A. K. Chanda, IAS Chairman, Kolkata Port Trust	033-22205370	033-22308226
Member	Shri Satish C. Srivastava Member (Cargo), IWAI	0120-2543982	0120-2543994
Member	Shri P. C. Dhiman, IAS Joint Secretary, (Shipping & IWT) in-charge Deptt. of Shipping (From 10-07-2006 to 31-03-2007)	011-23710189	011-23722855

OTHER DETAILS

		Telephone No.
Secretary	Sh. S. S. Pandian (From 01/04/2006 to 28-05-2006)	—
	Shri Pradeep Kumar, IAS (From 29/05/06 to till date)	0120-2544036
Auditors	COMPTROLLER AND AUDITOR GENERAL OF INDIA	011-23235793
Bankers	SYNDICATE BANK Transport Bhawan, Parliament Street, New Delhi 110 001	011-23717573
	SYNDICATE BANK Sector-18, Noida 201 301	0120-2514381
	CANARA BANK Sector-1, Noida 201 301	0120-2529163

REGIONAL OFFICES

	Telephone No.	Fax No.
INLAND WATERWAYS AUTHORITY OF INDIA 5 th Floor, Biscomaun Bhawan, West Gandhi Maidan, Patna - 800 001 (BIHAR)	0612-2230442 0612-2230789 0612-2235225 0612-2207852	0612-2230442
INLAND WATERWAYS AUTHORITY OF INDIA P-78, Garden Reach Road, Kolkata - 700 043 (W. B.)	033-24390393 033-24395577 033-24396055	033-24395570 033-24391710
INLAND WATERWAYS AUTHORITY OF INDIA 5 th Floor, Parameshwari Building, Chatribari, A.T. Road, Guwahati - 781 001 (ASSAM)	0361-2510368 0361-2541081	0361-2541081
INLAND WATERWAYS AUTHORITY OF INDIA National Waterway Road N. H. 47 Bye pass, Kannadikkadu Maradu, Ernakulam - 682 304 (KERALA)	0484-2389804 0484-2389208	0484-2389445

SUB OFFICES

	Telephone No.	Fax No.
INLAND WATERWAYS AUTHORITY OF INDIA Office Building No. 1 FBP Office Complex P. O. Farakka Barrage Distt. Murshidabad (WB).	09232532934 09474189086	—
INLAND WATERWAYS AUTHORITY OF INDIA S.M. College Road Chhoti Khanjarpur Bhagalpur - 821 001 (BIHAR)	0641-2400651 0641-2401251	0641-2400651
INLAND WATERWAYS AUTHORITY OF INDIA 52, 2 nd floor, Patel Nagar, Nadesar, Varanasi - 221 002 (U.P.)	0542-2505329	0542-2505329
INLAND WATERWAYS AUTHORITY OF INDIA 360/F/44, Nawab Yusuf Road, Civil Lines, Allahabad - 211 006 (U.P.)	0532-2561151 0532-2560537	0532-2561152

1. IWT SECTOR - GENERAL INFORMATION:

An efficient transport sector is vital for development of the economy of any country. In a large country like India, efficient transportation becomes pivotal to stimulate competitive business environment. India's transport system comprises of a number of distinct modes namely; railways, roadways, inland waterways, coastal shipping and airways. In the liberalised economy of the country when private sector is expected to contribute large share in the GDP, it is necessary that Government takes adequate measures to make available an optimum mix of these transport modes.

Inland Water Transport (IWT) is a fuel efficient, environment friendly and cost effective mode of transport having potential to supplement the over burdened rail and congested roads. For this however, it is necessary that IWT mode is developed with public funding atleast to a threshold level at which private sector would come up for development of infrastructure as well. India has an extensive network of rivers, canals, creeks etc. of about 14,500 kms, of which 5700 kms are navigable with mechanized vessels.

IWT sector in India has a glorious past. In the 19th century, navigation by power crafts and country boats played a dominant role in development of trade and commerce along several rivers and canals and there were services from Kolkata to Garh Mukteshwar on Ganga, Agra on Yamuna, Ayodhya on Ghagara and Dibrugarh on Brahmaputra. The advent of railways and extension of its network made a dent in water transport in India. Further, phenomenal growth of roads, also gave a decisive set back to IWT. This coupled with inadequate development of IWT sector over the years led to its decline and except in a few areas namely, Assam, West Bengal, Goa, Kerala, Mumbai and some other coastal areas (where it has natural advantages and no developmental intervention was needed), the IWT sector was marginalised.

However, considering its inherent advantages and the need for their systematic development for overall benefit of the nation, several Committees studied IWT system of the country since independence from time to time and advocated systematic development of the mode. National Transport Policy Committee in its report (1980) accordingly recommended for setting up of an authority for development and regulation of inland waterways, which led to formation of Inland Waterways Authority of India (IWAI) in 1986.

Since formation of IWAI, three waterways namely Ganga, Brahmaputra and West Coast Canal have been declared as National Waterways and three more waterway systems are under process of declaration as new National Waterways.

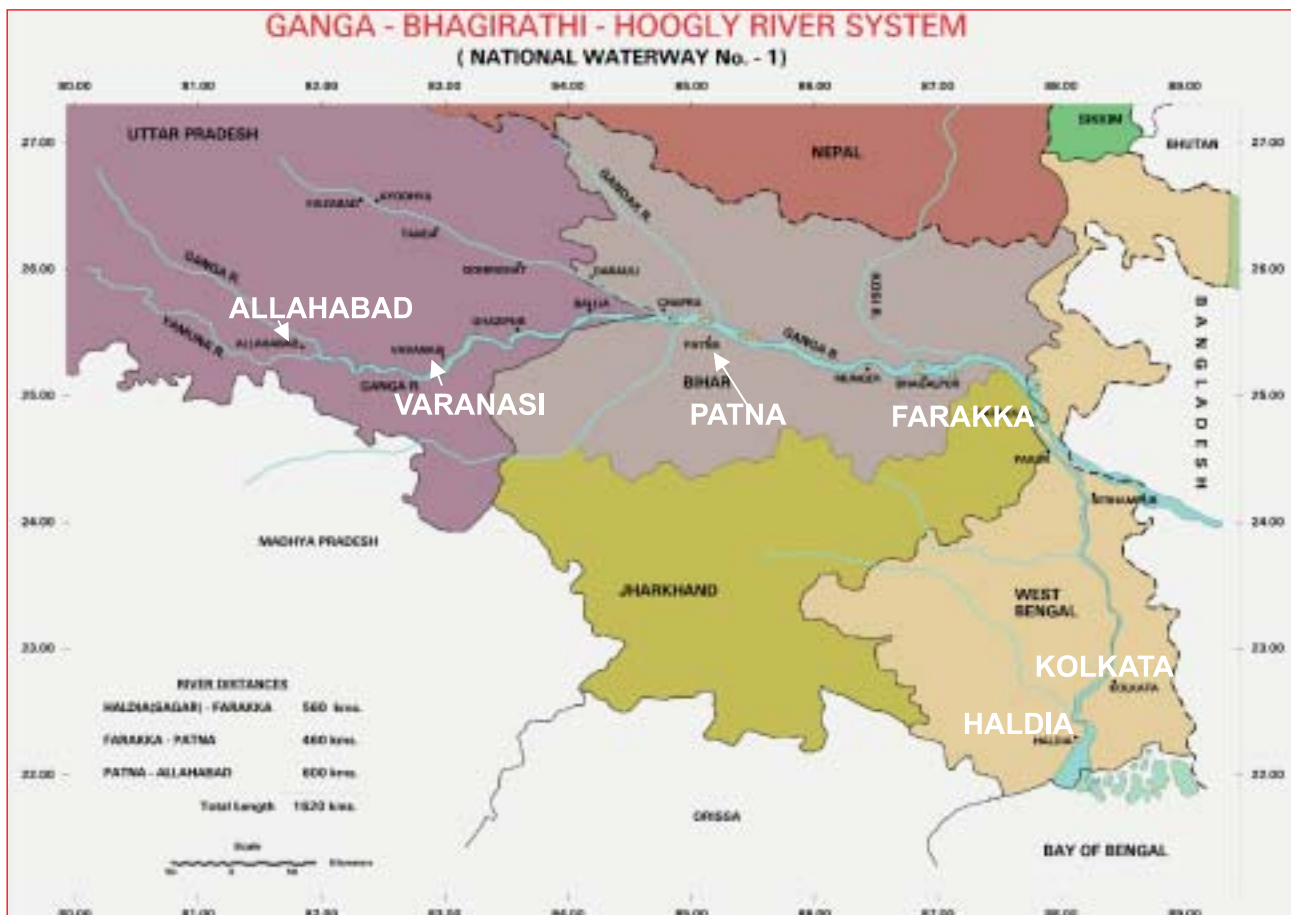
In the last few years, movement of cargo by IWT mode in organised sector has shown upward trend and increased from 1.63 billion tonne km (btkm) in 2003-04 to 3.38 billion tonne km (btkm) in 2006-07. But it still forms a very small part of the total transport network. In terms of tonne kilometer of total inland cargo movement, its share is about 0.34% approx only, (out of the total inland cargo of about 1,000 billion ton km). The target is to increase the modal share of IWT to 20 billion tonne km by 2025.

2. INLAND WATERWAYS AUTHORITY OF INDIA

Inland Waterways Authority of India (IWAI) was constituted on 27th October, 1986 vide IWAI Act 1985 (82 of 1985) for development and regulation of inland waterways of the country. The Authority undertakes various infrastructure development works on national waterways. It also carries out feasibility studies and prepares proposals for declaration of other waterways as National Waterways. It also assists States in development of IWT sector and provides subsidy to IWT operators for acquiring IWT fleet for transportation of cargo and passengers.

NATIONAL WATERWAY NO. 1 (NW-1)

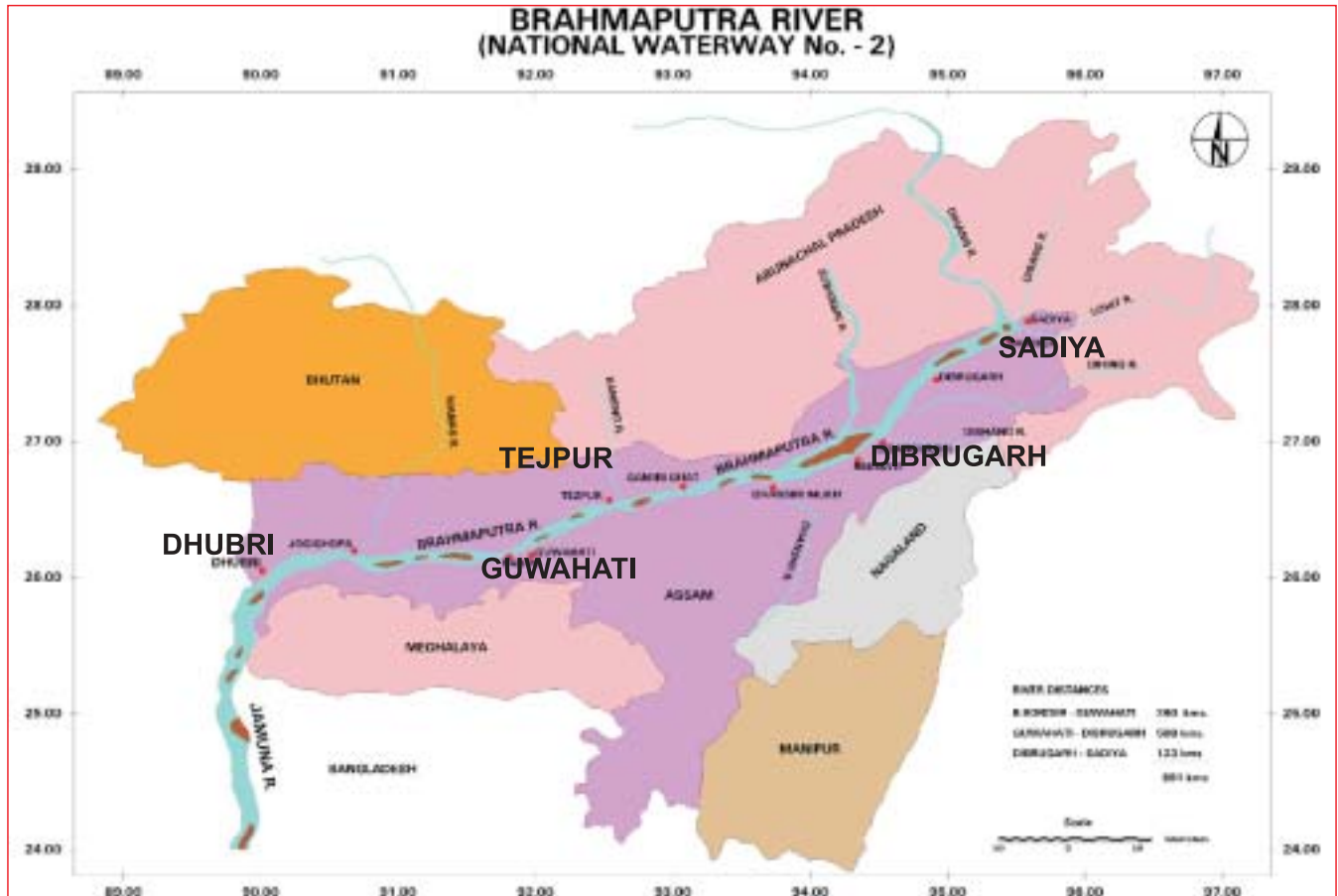
Ganga-Bhagirathi-Hooghly river system from Allahabad to Haldia (1620 kms) – declared as National Waterway in 1986.



Ganga-Bhagirathi-Hooghly river system - National Waterway No. 1

NATIONAL WATERWAY NO. 2 (NW-2)

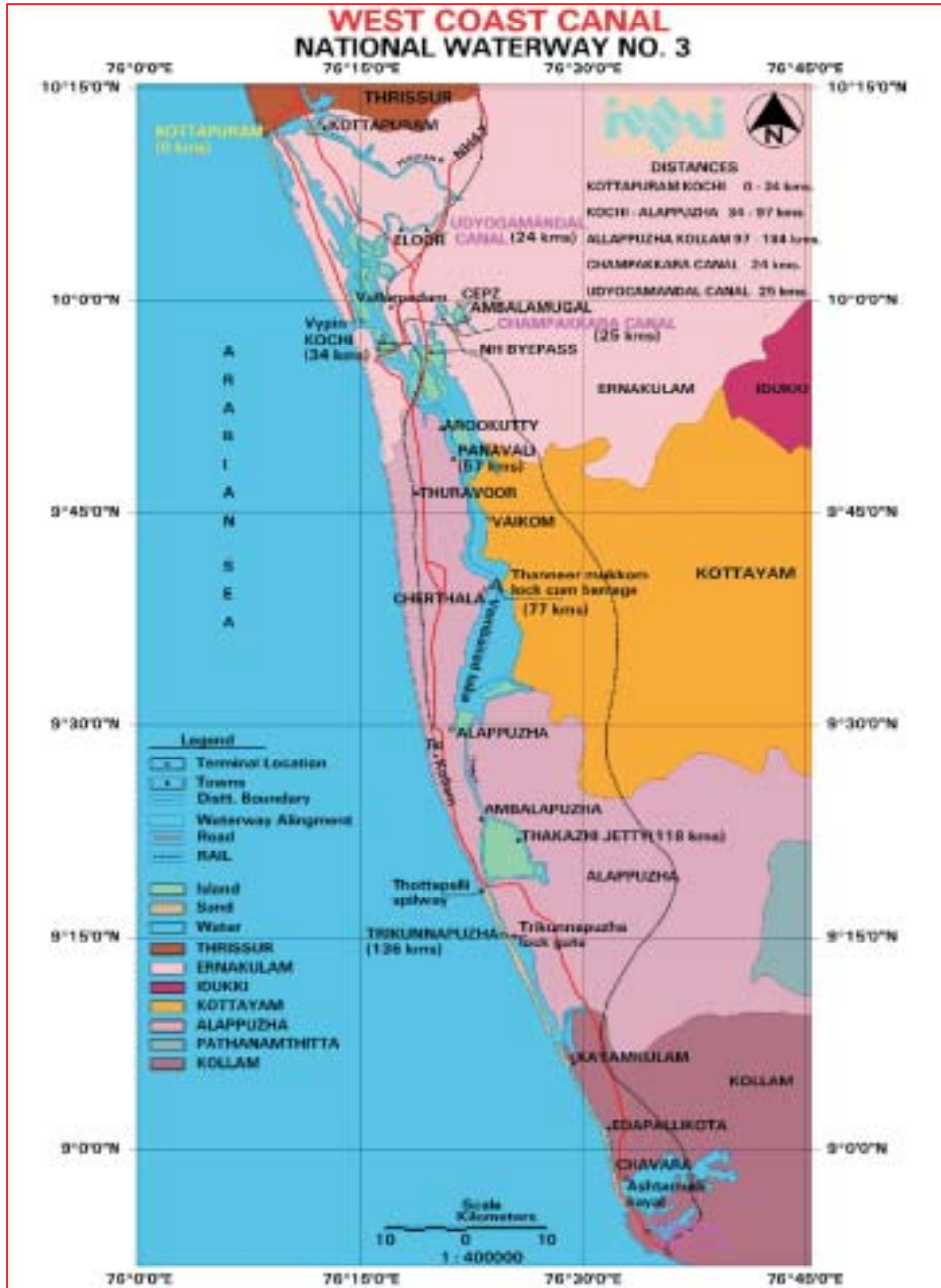
The Brahmaputra river from Sadiya to Dhubri (891 kms) – declared as National Waterway in 1988.



The Brahmaputra River - National waterway No. 2

NATIONAL WATERWAY NO. 3 (NW-3)

The West Coast Canal from Kollam to Kottapuram along with Champakara and Udyogmandal canals (205 kms) – declared as National Waterway in 1993.



The West Coast Canal from Kollam to Kottapuram along with Champakara and Udyogmandal canals - National waterway No. 3

3. DEVELOPMENT OF NATIONAL WATERWAYS

Three basic IWT related infrastructure for development of waterways are:

- (a) Fairway or navigational channel with desired width and depth.
- (b) Navigational aids for safe navigation; and
- (c) Terminals for berthing of vessels, loading/unloading of cargo and for providing interface with road and rail.

The fourth component for making IWT system viable is inland vessels for transportation of goods and passengers. It is envisaged that once the fairway, terminals and navigational aids are provided to a satisfactory level, private sector will invest in owning and operating inland vessels.

Various projects for providing/maintaining fairway, terminals and navigational aids are being executed on National Waterways.

National Waterways No. 1 and 2 are typical alluvial rivers with characteristics of braiding, meandering and high barge level fluctuation (both horizontal and vertical) between summer and monsoon months. On these rivers, several shallow areas (shoals) come up during low water season and maintenance of 2 m Least Available Depth (LAD), particularly in upper reaches becomes a difficult task, and river conservancy works are to be repeated every year. NW-3 on the other hand is a tidal canal with predictable and uniform tidal variation. On this waterway once the desired depth is provided by capital dredging it can be maintained for a number of years by undertaking nominal maintenance dredging.

NATIONAL WATERWAY NO.1

Fairway Development: - River conservancy works namely bandalling and dredging for maintaining navigable depth are taken up on year to year basis on this waterway. In 2006-07, bandalling and dredging were carried out between Tribeni and Allahabad (1424 Km.). Least Available Depth (LAD) of 2 m was maintained between Haldia and Patna (1020 km) and 1.5 m between Patna –Ghazipur (230 km) for about 300 days. Between Ghazipur and Allahabad (370 km) LAD of 1.2 m only could be maintained for about 275 days. Projects were sanctioned by IWAI Board for construction and supply of six CSD units [a unit comprise of one Cutter Suction dredger(CSD),one Work Boat (WB) and one Accommodation Boat (AB)]. Work of Construction of seven survey vessels was awarded during the year and was in progress.

Terminals: - Construction of low level jetty of fixed terminal (capable of handling containers) at Patna was completed during the year. For construction of high level jetty of this terminal, CPWD completed the design and started tendering process. Also, steps were initiated for construction of fixed terminals at Haldia, BISN (GR Jetty) Kolkata, Varanasi and a floating terminal with pontoon approach road capable of movement of trucks at Allahabad. Floating terminals exist at Haldia, Kolkata, Rajmahal, Sahibganj, Manihari, Bhagalpur, Semaria, Patna, Ballia, Kaithy, Varanasi, Chunar and Allahabad. These terminals were maintained and used for transportation of cargo. Projects were also sanctioned for construction and supply of nine terminal pontoons and tendering was in process.

Navigational Aids: - Channel marks for day navigation were erected and maintained between Tribeni and Allahabad. Besides, fortnightly thalweg surveys were carried out, river notices issued and pilotage provided to the cargo vessels. Night navigation aids were also maintained between Tribeni and Farakka (364 km). For extension of night navigational facilities upstream of Farakka, the technical and operational parameters of the system were reviewed through a Committee under the Chairmanship of Director General Light Houses and Lightships (DGLL). The report of this committee was finalized based on which project was prepared and sanctioned by IWAI Board during 2006-07.

NATIONAL WATERWAY NO.2

Fairway Development: - River conservancy works namely bandalling and dredging for maintaining navigable depth are taken up on year to year basis, on this waterway. In 2006-07, bandalling and dredging were carried out in the entire waterway. LAD of 2 m was maintained round the year between Dhubri and Dibrugarh (768 km). Between Dibrugarh and Sadiya (123 km) LAD of 1.2 m could be maintained only for about 260 day.

Construction of second hydraulic surface dredger for NW-2 also progressed. Project for construction of four more CSD units [a unit comprise of one Cutter Suction dredger (CSD), one Work Boat (WB) and one Accommodation Boat (AB)] was sanctioned by IWAI Board and construction of two survey vessels was awarded to a shipbuilder.

Terminals:- Construction of low level jetty of fixed terminal (capable of handling container) at Pandu progressed during the year. For construction of high level jetty for this terminal CPWD completed the design and tendering was initiated by them. Floating terminals already exist at Dhubri, Jogighopa, Pandu, Tezpur, Silghat, Jamuguri, Neamati and Bogibill. These terminals were maintained and used for transportation of cargo.

Navigational Aids: - Channel marks for day navigation were erected and maintained in entire waterway. Night navigation aids were also maintained between Dhubri and Pandu (255 km). Besides, fortnightly thalweg surveys were carried out, river notices issued and pilotage provided to cargo vessels. For extension of night navigational facilities upstream of Pandu, the technical and operational parameters of the system were reviewed through a Committee under the Chairmanship of Director General Light Houses and Lightships (DGLL). The report of this committee was finalized based on which project was prepared and sanctioned by IWAI Board during 2006-07.

NATIONAL WATERWAY NO.3

Fairway Development: - Fairway maintenance works including maintenance dredging, and channel marking are taken up on year to year basis. Capital dredging for widening and deepening of canal between Kochi and Kollam was started in first phase during 1997-98. Work on Kochi-Allapuzha sector was completed, but on the remaining reaches, it got delayed due to various problems such as disposal of dredged material, fishing nets, local issues leading to contractual problems etc. In Kochi – Kottapuram stretch, capital dredging was taken up in 2nd phase. The status of capital dredging on NW-3 as on 31.3.07 is as given below:

Stretch	Total length km	Total Shoal length	Shoal dredged	Balance shoal To be dredged
Kottapuram-Kochi	30	18.83 km (8.05 L-cum*)	14 km (6.60 L-cum)	4.83 km (1.45 L-cum)
Kochi-Alappuzha	62	10.00 km (5.05 L-cum)	10.00 km (5.05 L-cum)	nil
Alappuzha- Kayamkulam	38	20.33 km (6.40 L-cum)	6.5 km (2.87 L-cum)	13.83 km (3.53 L-cum)
Kayamkulam- Edapallikotta	21	21 km (7.59 L-cum)	17.5 km (5.06 L-cum)	3.50 km (2.53 L-cum)
Edapallikotta-Kollam	17	17 km (5.38 L-cum)	11.75 km (4.40 L-cum)	5.25 km (0.98 L-cum)
Champakara and Uydogmandal canal	37	nil	nil	nil
TOTAL	205	87.16 km (32.47 L-cum*)	59.75 km (23.98L-cum)	27.41 km (8.49 L-cum)

* Lakh cubic meter

Bank protection work in some stretches has been completed and for taking up such work in more areas, work has been tendered.

Terminals: Construction of 7 terminals namely Kottapuram, Aluva, Maradu, Viakom, Taneermukham (Chertala), Trikkunnappuzha and Kayamkulam has been completed. For providing facilities for mechanical handling at these terminals, tenders for procurement of 8 mobile cranes 5 fork lifts and 8 platform trucks were processed. For construction of terminal at one more location namely Kollam, revised estimate was sanctioned and CPWD was directed to execute the work on priority.

Navigational Aids: 24 hrs. navigation aids, by way of buoys and lights have been provided between Kochi-Allapuzha in West Coast Canal and Udyogmandal and Champakara Canals.

4. ACTION PLAN FOR MAKING EXISTING NATIONAL WATERWAYS FULLY FUNCTIONAL

An Action Plan has been prepared for making the three National Waterways fully functional. Under this Action Plan, specific projects have been identified for development of fairway, navigational aids, terminals, procurement of vessels (namely dredgers, survey launches, cargo vessels) etc. The Action Plan envisages making the National Waterways fully functional in terms of the following:

- (a) Fairway with 3m/2m/1.5m depth in NW-1, 2m/1.5m depth in NW-2 and 2m depth in NW-3.
- (b) A judicious mix of fixed and floating terminals with mechanized handling facilities and access and egress by road/rail.
- (c) Facilities for day and night navigation and
- (d) Some vessels for demonstrating functionality of NWs.

Besides projects on National Waterways, the Action Plan also includes projects for IWT promotion, NINI, IT activities, Protocol routes, Centrally Sponsored Scheme, Technical Studies and R&D and Subsidy Scheme. The total estimated cost of the Action Plan is Rs.751.18 cr which includes Rs. 630.48 cr for 3 National Waterways.

As per the Action Plan, following specific infrastructure is proposed on 3 National Waterways : -

NATIONAL WATERWAY NO. 1

Fairway: LAD of 3m in Haldia – Farakka, 2 m in Farakka-Varanasi and 1.5m in Varanasi – Allahabad.

Navigational aids: 24 hrs. navigational facilities.

Terminals: Fixed terminals at Haldia, BISN (Kolkata), Pakur, Farakka and Patna. Floating terminals at Haldia, Kolkata, Diamond Harbour, Katwa, Tribeni, Behrampur, Jangipur, Bhagalpur, Semaria, Doriganj, Ballia, Ghazipur, Varanasi, Chunar, and Allahabad.

NATIONAL WATERWAY NO. 2

Fairway: LAD of 2 m from Dhubri to Dibrugarh and 1.5 m from Dibrugarh to Sadiya.

Navigational aids: 24 hrs. navigation aids from Dhubri to Dibrugarh.

Terminals: Fixed terminal at Pandu. Floating terminals at Dhubri, Jogighopa, Tejpur, Silghat, Dibrugarh, Jamgurhi, Bogibil, Saikhowa and Sadiya.

NATIONAL WATERWAY NO.3

Fairway: LAD of 2 m in the entire waterway.

Navigational aids: 24 hrs. navigational aids in the entire National Waterway.

Terminals: Fixed terminals at Aluva, Vaikom, Kayamkulam, Kottapuram, Maradu, Chertala, Trikkunnapuzha, Kollam and Alappuzha with mechanical handling facilities.

Various projects as per the Action Plan are under implementation.

For National Waterway No. 1, a total of 31 projects were conceptualized in the Action Plan (13 for fairway development including vessels for dredging, survey etc, 3 for navigational aids, 10 for terminals, 4 for procurement of cargo vessels for demonstration purposes and 1 for vessel repair facility). Out of these, 23 projects have already been sanctioned at a cost of Rs. 247.71 cr and remaining 8 projects are in the process of sanction.

For National Waterway No. 2 (including protocol route) a total of 17 projects were conceptualized in the Action Plan (7 for fairway development including vessels for dredging, survey etc, 2 for navigational aids, 5 for terminals, 2 for procurement of cargo vessels for demonstration purposes and 1 for vessel repair facility). Out of these, 13 projects have already been sanctioned at a cost of Rs. 273.46 cr and remaining 4 projects are in the process of sanction.

For National Waterway No. 3, a total of 12 projects were conceptualized in the Action Plan (7 for fairway development including vessels for dredging, survey etc, 2 for navigational aids, 2 for terminals and 1 for procurement of cargo vessel for demonstration purposes). Out of these, 10 projects have already been sanctioned at a cost of Rs. 62.36 cr and remaining 2 projects are in the process of sanction.

5. PROPOSED NEW NATIONAL WATERWAYS

Declaration of the following waterways as National Waterways is in final stage.

(i) Kakinada-Pondicherry stretch of canals consisting of Kakinada canal, Eluru canal, Commamur canal, Buckingham canal and Kaluvelly tank along with Bhadrachalam-Rajahmundry stretch of River Godavari and Wazirabad-Vijayawada stretch of River Krishna (1095 km) in the States of Andhra Pradesh and Tamil Nadu and Union Territory of Pondicherry and

(ii) Talcher-Dhamra stretch of Brahmani-Kharsua-Dhamra river system along with Geonkhali-Charbatia stretch of East Coast Canal, Charbatia - Dhamra stretch of Matai river and Mahanadi delta river system between Mangalgadi and Paradip (623 km) in the States of Orissa and West Bengal.

Bills for declaration of these two waterways have already been introduced in the Parliament on 8th December, 2006. The bills have since been referred to the Parliamentary Standing Committee for examination.

In addition, proposal for declaration of Barak river from Bhanga to Lakhipur (121 km) as a National Waterway was also processed by the Govt. during the year.

6. CENTRALLY SPONSORED SCHEME

For overall development of IWT sector in the country, it is necessary that National Waterways as well as other State waterways are developed side by side. A large number of smaller rivers form tributaries of National Waterways. If developed with IWT infrastructure, many of these smaller rivers can become suitable for navigation by smaller/medium size inland vessels and can act as feeder routes to the main waterways.

While the development and regulation of National Waterways is the responsibility of Central Govt./IWAI, the respective State Governments should develop other waterways. However, due to fund constraint, it has not been possible for the States to provide adequate funds for IWT development. Therefore, to encourage the States for IWT development, there was a Centrally Sponsored Scheme (CSS) for IWT sector. Under the CSS, 100 per cent grant was being provided for the projects of North-Eastern States including Sikkim and 90 per cent grant to other States. 35 projects of 15 States (Andhra Pradesh, Assam, Bihar, Goa, Himachal Pradesh, Karnataka, Kerala, Maharashtra, Madhya Pradesh, Manipur, Nagaland, Orissa, Tripura, Uttar Pradesh and West Bengal) at a total cost of Rs. 106.74 cr. have been sanctioned and fund of Rs. 52.84 cr has also been released to these States from 2003-04 to 2006-07. Out of these, 4 projects of 4 States (Assam, Manipur, Nagaland and West Bengal) at a cost of Rs. 11.88 cr. were sanctioned and an amount of Rs. 12.00 cr. released to various States against projects sanctioned in previous years by Department of Shipping during 2006-07.

The Planning Commission has however discontinued the scheme from the year 2007-08. For North-East region however, this scheme is now classified as Central Sector Scheme and transferred to Ministry of Development of North Eastern Region.

7. INLAND VESSEL BUILDING SUBSIDY SCHEME

An Inland Vessel Building Subsidy Scheme (IVBSS) was introduced from 1st April 2002 for a period of five years. Under this scheme, 30% cost of an inland vessel constructed at Indian shipyard for operation on National Waterways and Indo-Bangladesh Protocol routes is subsidized. Initially, there was a good response from the entrepreneurs to this scheme and in-principle approval for construction of 33 vessels were provided during 2003 and 2004. However, construction of many of these vessels was not started by the applicants due to which in-principle approval accorded to 27 vessels were withdrawn. Subsequently, some changes were made in the scheme (e.g. classification society need not be involved for cargo vessels up to 600 T capacity and increase in the capacity of eligible vessels from 1000 T to 2000 T). This resulted in revival of interest in this scheme by the entrepreneurs and many applications were received during 2005-06 and 2006-07. During 2006-07, in-principle approval for 28 more vessels (16 passenger vessels and 12 cargo vessels) was accorded. Construction of two vessels was completed under this scheme.

The scheme, however, has ended on 31.3.07 and IWAI has requested the Department of Shipping (DoS) for extension of this scheme on a long term basis.

8. PUBLIC PRIVATE PARTNERSHIP (PPP) PROJECTS

With a view to provide an impetus to development of IWT mode, the Government of India had approved an Inland Water Transport Policy in 2001. This policy envisages encouraging private sector participation in development of infrastructure and ownership and operation of inland vessels. Accordingly, IWAI Act was amended authorizing IWAI to enter into joint ventures.

For exploring possibility of such PPP projects, some priority projects were short-listed through a consultant (M/s. IFCI Ltd) and for some of these projects, bids were invited by IWAI. This initiative of IWAI succeeded in attracting private players to IWT sector and 4 (four) Memorandum of Understanding (MOU)'s have been signed during 2006-07 between IWAI and respective successful bidders for setting

up and management of jetties at Bandel, Kolaghat and Budge-Budge in West Bengal and for acquisition, operation and management of barges on O-D pairs of Kolkata-Mongla, Kolkata-Dhubri and Kolkata-Pandu. Further action for incorporation of Joint Ventures Companies is on.

9. PREPARATION OF 11TH FIVE YEAR PLAN FOR IWT SECTOR

For preparation of 11th Five Year Plan (2007-12) a Working Group on Shipping and IWT under the chairmanship of Secretary (Shipping) was constituted by the Planning Commission. Department of Shipping in turn constituted two Sub Groups for IWT sector; Sub Group I under the chairmanship of Chairman IWAI and Sub Group II under the chairmanship of Vice-Chairman IWAI. The Sub Groups' Report form part of the Report of the working Group finalized by the Deptt. of Shipping. A paradigm shift in approach to IWT development has been suggested by IWAI vide the Sub-Group Report.

10. NATIONAL INLAND NAVIGATION INSTITUTE

The National Inland Navigation Institute (NINI) was inaugurated in Feb, 2004 with a view to impart training in the field of IWT so as to get skilled personnel for Inland Vessels and undertaking various other activities in a professional manner. Initially, only two preparatory level courses were introduced for 1st Class Master & 1st Class Drivers.

Now, after 3 years the numbers of courses for preparatory level have been increased to six and three new induction level training courses are also being introduced in the current year, which are as follows: -

- a) Induction level training for:
 - i) Deck Ratings
 - ii) Engine Ratings
 - iii) Condensed Course of two months duration for in-service trainees covering both deck side and engine side followed by one month outdoor training on Motor Boat Operation, Swimming and Rescue Operation.

- b) Preparatory level training for:
 - i) Serangs of Inland vessels
 - ii) 2nd Class Masters of Inland vessels
 - iii) 1st Class Masters of Inland vessels
 - iv) 2nd Class Drivers of Inland vessels
 - v) 1st Class Drivers of Inland vessels
 - vi) Licensed Drivers of Inland vessels

NINI is also planning to provide training in other areas as per the details given below :

- (a) Hydrographic Survey
- (b) River Conservancy
- (c) River Training Works
- (d) Navigational Aids
- (e) Construction of jetties / terminals
- (f) Operation of vessels
- (g) Transport economics
- (h) Repair and maintenance of craft etc

In this regard, a fresh MOU between IWAI & Indian Institute of Port Management (IIPM) has been signed on 7th December, 2006 which would be effective up to 31st March, 2008.



To look after the management of the Institute, a Program Advisory Committee (PAC) has been constituted during 2006 under the Chairmanship of Member (C&F), IWAI. Senior Officers of various institutes/ State IWT directorate are the members of the PAC.

The PAC is taking meeting regularly. Till date, four PAC meetings have been held. As on date, the total number of trainees passed out from NINI is 650 including 291 from BSF, 225 from CRPF and 134 civilian trainees. Presently, 27 trainees including 17 from CRPF and 10 civilian are undergoing training for induction level course for Deck/ Engine ratings.

Thus the NINI is growing day by day to be one of the top Institutes imparting IWT training in India.

11. HYDROGRAPHIC SURVEYS IN NATIONAL WATERWAYS

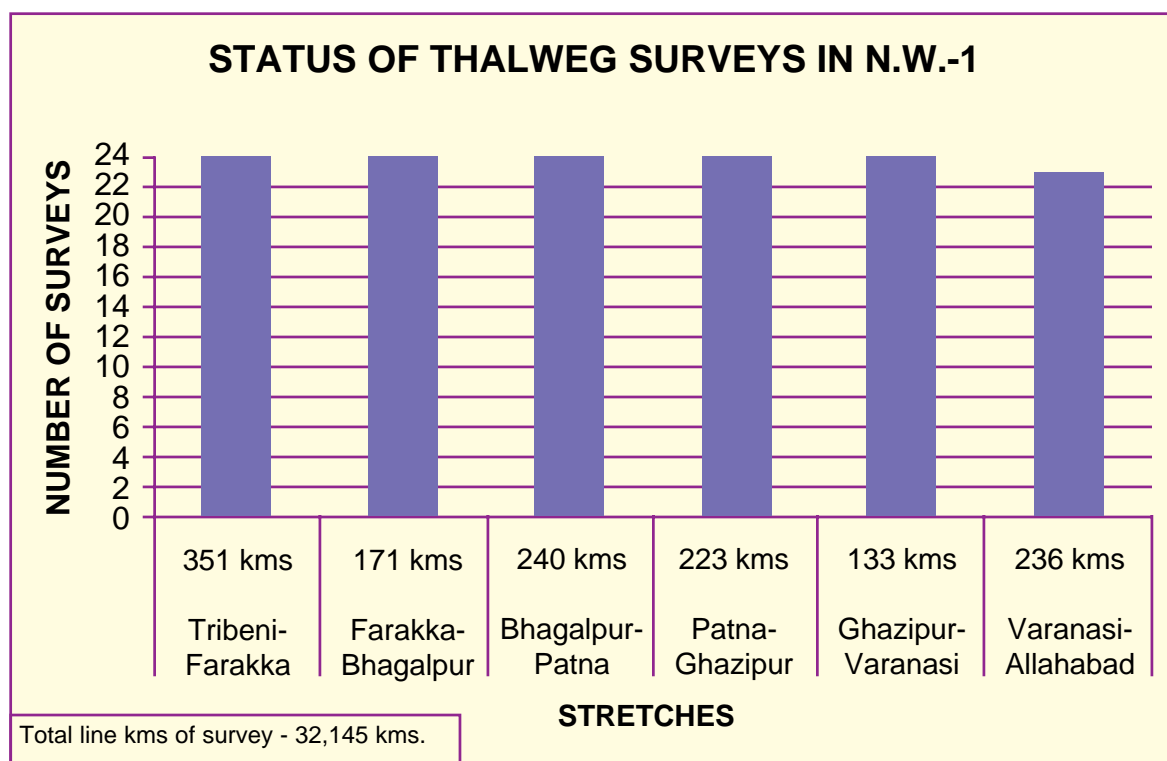
Hydrographic survey is a pre-requisite for waterway development and for safety of navigation. Modern survey techniques using Automatic Hydrographic Survey System (AHSS) with Digital Echo

Sounders and Global Positioning System (GPS) are used for achieving better accuracy in surveys. Survey vessels fitted with the state-of-the art equipment have been deployed in all three National Waterways. Hydrographic survey capabilities have been enhanced with introduction of latest survey equipment viz. Side Scan Sonar, Sub-Bottom Profiler and Acoustic Doppler Current Profiler.

Survey Activities during the year 2006-07

NATIONAL WATERWAY NO.-1

During the year, Thalweg surveys were conducted departmentally and River Notices were issued both in English & Hindi. The details of surveys are given below: -



Detailed surveys, Pre & Post bandalling / dredging surveys were conducted departmentally at 12 shoal locations in Tribeni - Farakka, 4 in Farakka - Bhagalpur, 17 in Bhagalpur – Patna stretches and at 61 shoals in Patna - Allahabad stretch. Based on the surveys, River Conservancy works like Bandalling / Dredging were undertaken.

Terminal Surveys were carried out at Haldia, Garden Reach. Jetty-II, Shantipur Ghat, Guptipara Ferry Ghat, Swaroopganj, Kashiganj Ghat (Katwa), Berhampore, Jangipur, Putimari, Bhagalpur, Manglaghat(Rajmahal), Samdaghat, Manihari, Karagola , Kahalgaon, Semaria, Gaighat, Doriganj, Majhua, upstream Ghazipur Road Bridge., Kaithy, Varanasi and upstream Ramnagar Road Bridge.

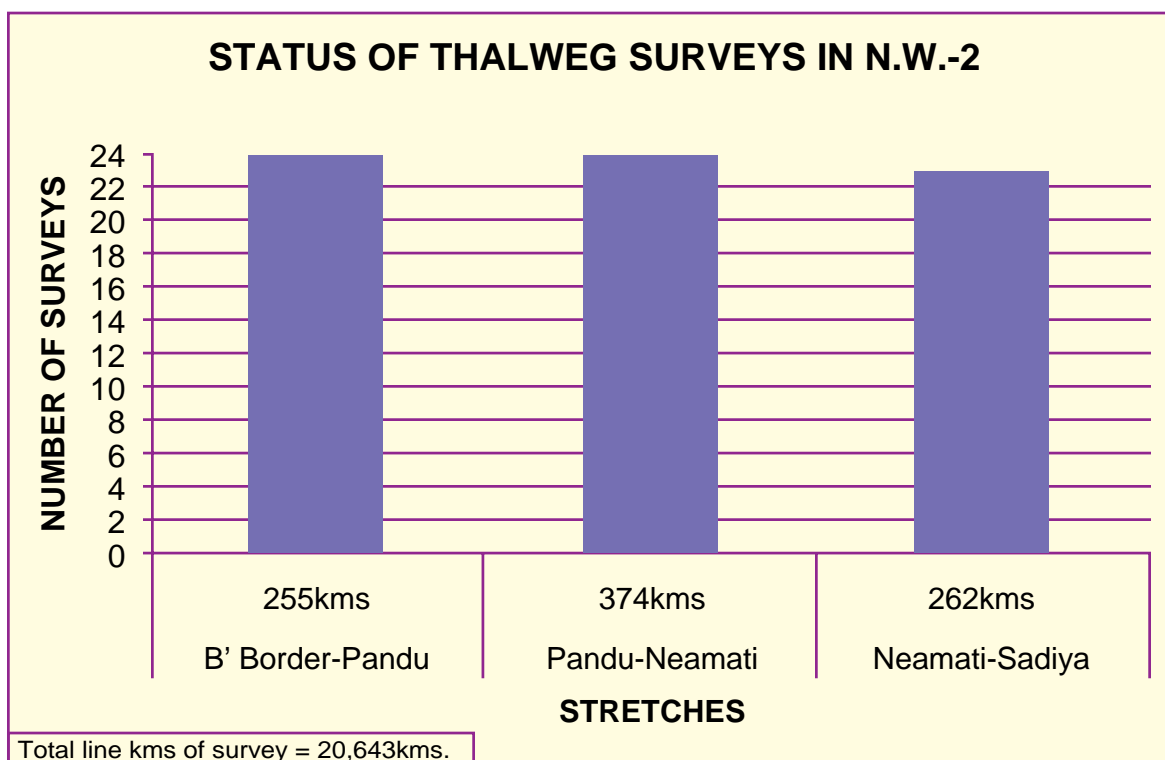
Bank-to-Bank bathymetric survey from Patna to Allahabad (582kms) and Bank-to-Bank land survey between Patna & Allahabad (89kms) were carried out departmentally for identifying appropriate river training measures and for preparation of Navigational Chart. Ground verification survey from Farakka to Allahabad was also completed for preparation of Navigational charts.



Bathymetric Survey in progress using Automatic Hydrographic Survey System

NATIONAL WATERWAY NO.-2

During the year, Thalweg Surveys were conducted departmentally and the River Notices were issued both in English & Hindi. The details of the surveys are given below:

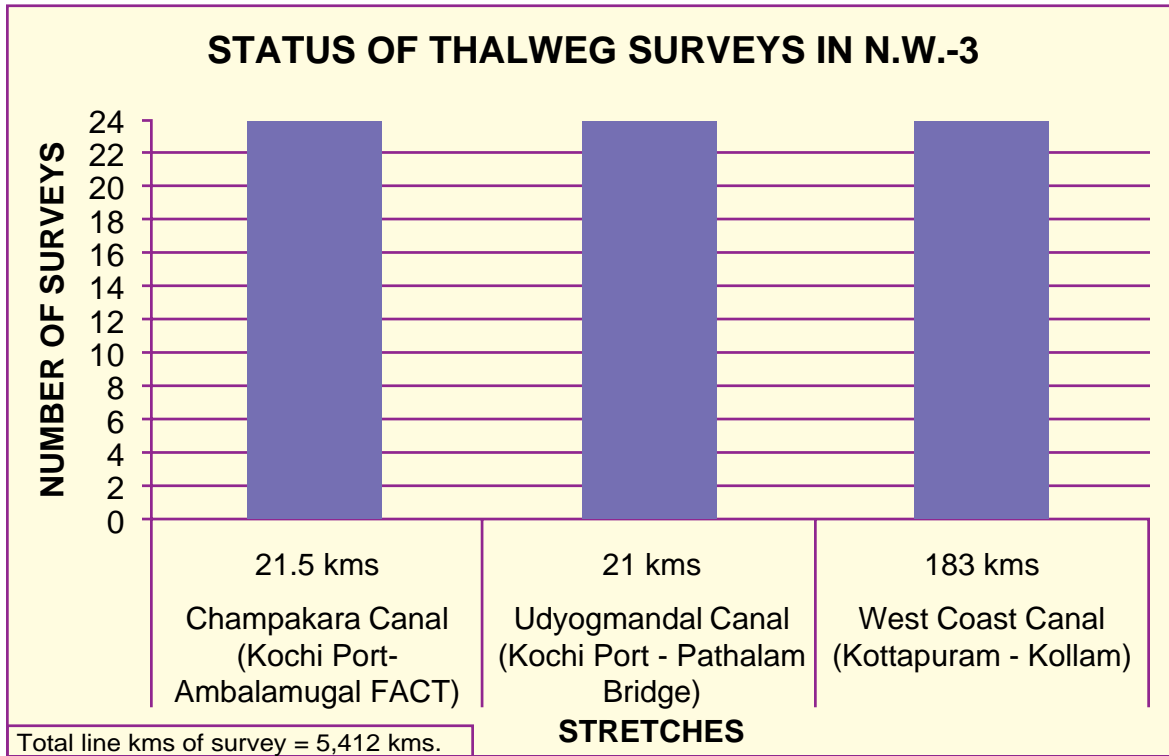


Detailed surveys, Pre & Post bandalling / dredging surveys were carried out departmentally at 80 shoal locations in Bangladesh Border - Sadiya stretch. Besides, Terminal Surveys were also carried out at Dhubri, Tezpur, Jamuguri, Bogibill, Dibrugarh (Army Ghat), Shaikhowa and Sadiya.

Bank-to-Bank bathymetric surveys from Bangladesh Border to Pandu (246kms) and from Balijan to Sadiya (81kms) were carried out departmentally for identifying appropriate River training measures and for preparation of Navigational charts. Ground verification survey from Pandu to Sadiya was also completed for preparation of Navigational charts.

NATIONAL WATERWAY NO.-3

Thalweg surveys were conducted departmentally in Kottapuram – Kochi - Kollam stretch (West Coast Canal) and also in Udyogmandal & Champakkara Canals and the River Notices were issued both in English & Hindi. The details of the surveys are given below:-



Pre-Post Dredging Surveys were carried out departmentally at 19 locations in connection with capital dredging work. Besides, Terminal Surveys were carried out at Maradu, TCCL Area (opposite Aluva Terminal), FACT Area, Vaikom, Ayiramthengu and Thanneermukkom. Bank to bank survey has been completed in Udyogmandal canal from chainage 15.0 kms to 21.0 kms. Ground verification survey from Alappuzha to Kollam and Kochi to Kottapuram were also completed for preparation of Navigational charts.

12. SURVEY IN OTHER WATERWAYS

Detailed hydrographic survey in river Koraiyaru near Muthupet in Tamilnadu has been completed departmentally for assessing the dredging quantity in the approach channel for setting up of proposed Muthupet Fishing Harbour project. Thalweg survey from Alappuzha to Kottayam for assessing the navigability of carrying materials to Kottayam town and from Pathalam (Aluva Terminal) to Nedumbassery Airport Area to assess the navigability of Airport- Seaport IWT route were carried out departmentally. Besides, survey in Haora river and a portion of the Gumti river in Tripura were taken up through Minor Ports Survey Organization (MPSO), Mumbai for assessing the navigability of these rivers as per the request of the State Govt.

13. SURVEY VESSELS & EQUIPMENT

The following survey vessels are under operation: -

National Waterway	Name of vessel
NW-1	Kosi, Survekshak, Anupallav, Kamla & Mandakini
NW-2	Dihang, Subansiri, Lohit & Barak
NW-3	Pamba

All the Survey vessels are fitted with the state-of-the art survey equipment like Automatic Hydrographic Survey System and HF communication sets.

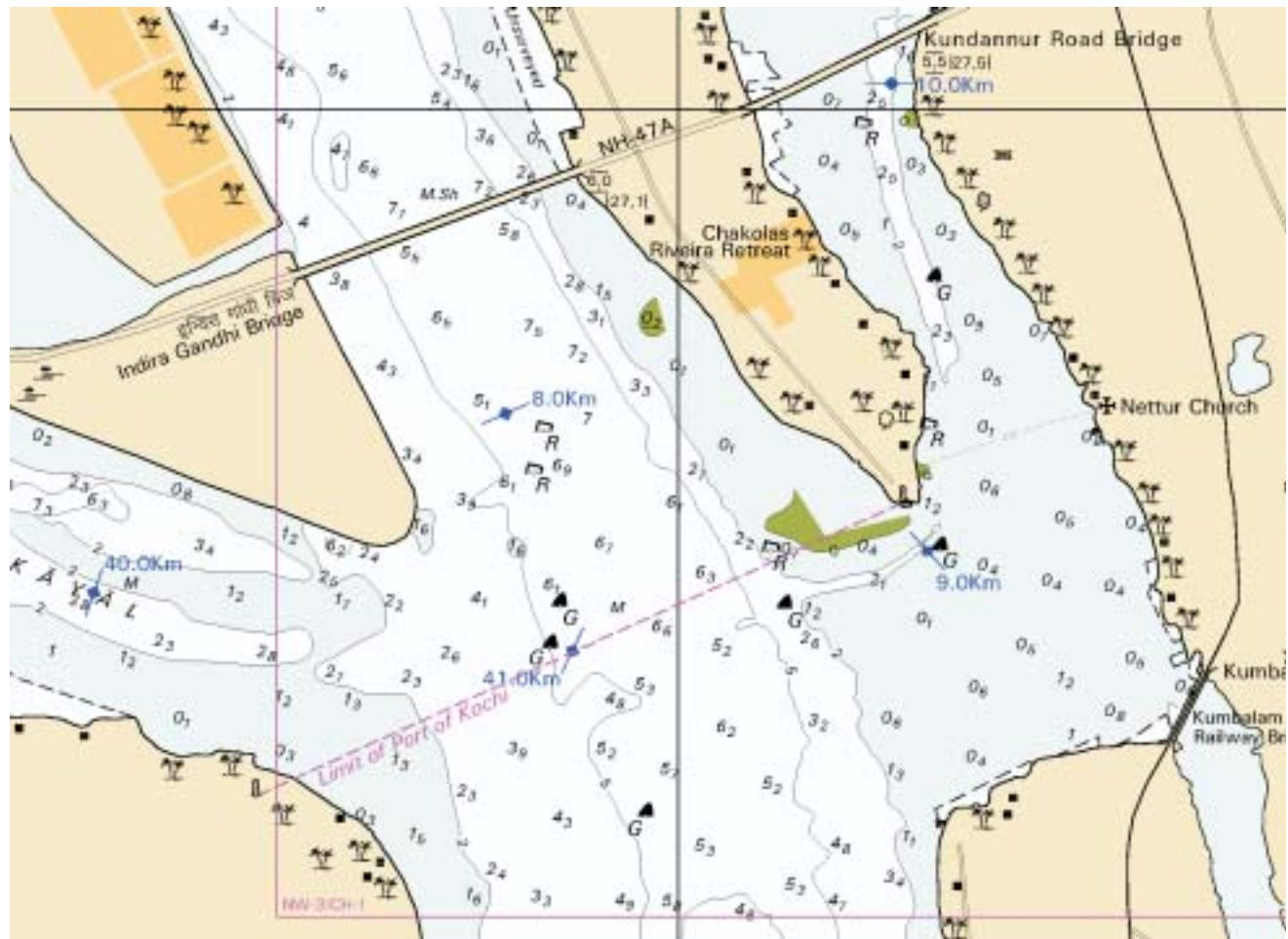


Survey Launch ‘Kamla’ deployed for bank-to-bank bathymetric survey

14. CARTOGRAPHIC CELL

The Cartography Cell in IWAI Head Office at Noida is equipped with modern chart making hardware, GIS/Survey softwares and plotters. The Cartographers of IWAI have been trained in using these hardware and softwares.

Navigational charts for Pandu- Sadiya stretch of River Brahmaputra of NW-2 (636 kms) and Kochi – Kottappuram & Alappuzha – Kollam stretches of West Coast Canal of NW-3 (124 kms) were published during the year. Charts for Farakka- Allahabad stretch of River Ganga of NW-1 (1001 kms) is under finalization. Navigational display software to be used with published navigational charts is also available for safe navigation on the National Waterways. Copyright registrations for published charts were also obtained. These charts are available for issue to the prospective users/ operators/ agencies on payment basis.



River Navigational Chart

15. CARGO MOVEMENT DURING 2006-07

The cargo movement on NW-1, 2 & 3 during the year 2006-07 was 3.43 million tons (768 million ton km) against 2.98 million tons (460 Million Tons Km) during 2005-06. During the year 2006-07 at Marmugao Port the cargo movement was 40.50 Million Tons against 36.27 million tons during 2005-06. Cargo movement in Mumbai Waterways (Dharamatar creek) during 2006-07 was 11.90 Million Tons (642.46 Million Tons Km) against 11.16 million tons (602.76 Million Tons Km) during 2005-06.

Details of cargo movement by Inland Waterways on National Waterways No. 1, 2, 3, Goa & Mumbai Waterways for the year 2002-03, 2003-04, 2004-05, 2005-06 & 2006-07 are indicated in Ton Kms (TKM) and Billion Ton Kms (BTKM) in the enclosed statement.

Fixed Schedule Sailing in NW-1 continued during the year 2006-07 and 23 trips were made by the vessels of IWAI between Haldia - Patna - Varanasi to demonstrate the navigability of the waterways and generate cargo.

Authority deployed its own vessels MV Rajagopalachari, MV Lal Bahadur Shastri, MV Homi Bhabha & MV Vishwassarya and transported 4966 MT Cargo between Haldia - Patna -Varanasi.

During the year HSD of Numaligarh Refinery Ltd. was transported from Silghat to Budge-Budge on regular basis by a private operator. 7.25 Lakh MT dry fly ash was exported from India to Bangladesh by IWT mode. Cranes and other mechanical handling equipment were deployed for cargo handling at Patna, Haldia & Kolkata jetties.



Cargo movement in National Waterway No.1

INLAND WATERWAYS AUTHORITY OF INDIA
CARGO MOVEMENT FOR NW-1, 2 & 3, Goa and Mumbai Waterways 2002-03 to 2006-07

STRETCH	2002-03	2003-04	2004-05	2005-06	2006-07	Type of cargo moved
NW-1 THE GANGA	MT	786,159	887,328	1,001,450	1,317,387	Cement, general cargo, rice, wood logs, packed and bulk edible oil, petroleum oil lubricants, fly ash, pulses, stone chip & iron dust.
	TKM	159,573,347	311,882,762	410,880,280	580,317,191	
NW-2 THE BRAHMAPUTRA	MT	795,651	810,145	804,401	1,086,026*	Cement, building material, fertiliser, petrococo, food grains, coal, plant & machinery, general cargo, etc. inter-district & inter state cargo & HSD.
	TKM	29,493,936	38,093,094	32,160,989	172,769,869	
NW-3 WEST COST CANAL	MT	1,362,149	1,158,783	1,172,889	1,022,776	Sulpher, rock, phosphate, liquified ammonia, zinc, Phosphoric Acid
	TKM	21,913,759	15,377,312	16,923,544	14,936,770	
SUB TOTAL IN NWS	MT	1,918,547	2,943,959	2,856,256	2,978,740	
	TKM		210,981,042	365,353,168	459,964,813	
	BTKM		0.211	0.365	0.460	
THE GOA (Mormogao)	MT	19,008,853	22,876,763	35,000,000	36,271,650	Iron ore, iron ore pellets, coal & pig iron.
	TKM		1,143,838,150	1,698,840,460	1,760,564,188	
	BTKM		1.144	1.700	1.761	
Mumbai Waterways Dharmatar Creek	MT	5,972,204	6,661,279	7,720,709	11,162,168	Steel, iron ore, pellets and related raw material, coke, sulper, rock phosphate, cement, lime stone & clinkers.
	TKM		273,112,439	416,549,069	602,757,072	
	BTKM		0.273	0.416	0.603	
Grand Total	MT	26,899,604	32,482,001	45,576,965	50,412,558	55,823,511
	TKM		1,627,931,631	2,480,742,697	2,823,286,073	3,375,729,218
	BTKM		1.628	2.481	2.824	3.376

Note: 1. These figures are collected by IWAI local offices from IWT operators.

2. Data for Goa Waterways received from Mormugao Port trust, Goa barge owners association and for Dharmatar creek from Maharashtra Maritime Board.

3. Average IWT distance of 50 kms in Goa and 54 in Mumbai Waterways considered.

* Subject to final report of IWT, Assam.

16. PERSONNEL AND ADMINISTRATION

As on 31/03/2007, 37 officers & 65 staff at the Head office and 55 officers & 195 staff in the field offices were in position. The Authority (IWAI Board) approved the restructuring exercise to be undertaken by the National Productivity Council, who have since submitted their Report. The Report is under examination.

The Authority is committed to implement official language policy of the union in all its activities in a progressive manner. Hindi workshops and other related activities were periodically organised at the head office and regional offices. Hindi week was organised at the head office and regional offices. On this occasion different types of Hindi competitions were organised in all the offices.

The Authority has been entrusted with the additional responsibility of implementing the official language policy of the Union in all the member offices of the Town Official Language Implementation Committee (T.O.L.I.C.), Noida by the Department of Official Language of the Ministry of Home Affairs. The Chairman of the Authority is the Chairman of T.O.L.I.C., Noida. Half-yearly meetings were organised regularly to discuss problems and difficulties being faced by the different member offices of the T.O.L.I.C., Noida.

A. INCOME & EXPENDITURE

During the financial year 2006-07, a sum of Rs. 1183.20 lakhs was received from the Government of India, Ministry of Shipping and a sum of Rs. 113.87 lakhs was earned by the Authority by way of interest on short-term deposits, sale of tender forms and usage of open stock yards and storage places at Pandu Port etc. The scheme-wise expenditure is indicated below:

Name of the Scheme	(Rs. in Lakhs)	
	Expenditure	
	Previous Year 2005-06	Current Year 2006-07
1. Technical Studies	115.77	100.00
2. Loan Interest Subsidy	42.14	87.89
3. National Waterways No. 1		
a. River Conservancy Works	1323.42	1044.06
b. Construction of Cargo berth	525.87	2222.54
c. Construction Dredgers & allied vessels	63.06	—
d. Procurement of Shore Crane	168.67	—
e. Procurement of Survey Equipment	—	216.26
f. Construction of crane pontoons	—	509.68
g. Procurement of Cargo Vessel	49.41	115.29
h. Procurement of Patrol Boats	19.84	—
i. Procurement of Cargo Vessel	65.25	77.69
J. Procurement of Container Crane	252.78	—

Contd....

(Rs. in Lakhs)

Name of the Scheme	Expenditure	
	Previous Year 2005-06	Current Year 2006-07
4. National Waterways No. 2		
a. River Conservancy Works	522.93	674.77
b. Construction of Terminal	1212.20	2207.11
c. Construction of Crane Pontoons	303.60	—
d. Construction of Dredgers & Allied Vessels	43.15	57.87
e. Procurement of Survey Equipments	2.37	52.92
f. Acquisition of POL/Cargo Vessel	58.46	415.03
g. Acquisition of Speed/Petrol Boats	21.34	
h. Acquisition of survey launch	—	152.91
i. Procurement of Crane	410.64	
j. Construction of B. G. Connectivity - Pandu	1030.00	
5. National Waterway No. 3		
a. Development works	249.11	316.43
b. Bank Protection	20.71	118.41
c. Construction of Terminals	202.75	504.86
d. Procurement of Survey Equipments	2.61	56.19
e. Acquisition of Petrol Boats	11.20	—
f. Night Navigation	—	38.91
6. Training of IWT Personnel including NINI	64.41	64.98
7. IWT Development Fund	120.54	143.51
8. Establishment (including I. Tax)	871.00	981.39
9. Procurement of Survey equipments	47.74	11.13
10. Joint Venture/BOT Project	0.51	22.10
Total	7821.48	10191.93

B. SOURCE AND APPLICATION OF FUNDS

(Rs. in Lakhs)

Name of the Scheme	Expenditure	
	Previous Year 2005-06	Current Year 2006-07
SOURCE		
1. Increase in Capital Grant	4484.43	6606.61
2. Decrease in working Capital	—	—
Total	4484.43	6606.61
APPLICATION		
1. Increase in fixed assets	2178.02	978.87
2. Increase in capital work in progress	1477.04	1032.22
3. Increase in working capital	829.37	4595.52
4. Excess of expenditure over Income		—
Total	4484.43	6606.61

ACKNOWLEDGEMENT

IWAI places on record its appreciation of the sincere efforts and contribution made by the employees at all levels.

IWAI also acknowledges the assistance and support given by the Department of Shipping, Ministry of Shipping, Road Transport and Highways, Comptroller & Auditor General of India, other Government departments and other agencies.

Sd/-
FOR AND ON BEHALF OF
INLAND WATERWAYS AUTHORITY OF INDIA
S. B. MATHUR
CHAIRMAN

PLACE : NOIDA

DATED : 19.11.2007

INLAND WATERWAYS AUTHORITY OF INDIA

ACCOUNTING POLICIES

1. TREATMENT OF EXPENSES

Expenditure on hydrographic survey, techno-economic study, bandalling, bottom-panelling, dredging, temporary structure in channel marking and maintenance of vessels, etc. is treated as revenue expenditure whereas expenditure on permanent structures in channel marking, cost of vessels, survey launches, tugs, barges, dredgers, etc. is treated as capital expenditure.

2. DEPRECIATION

Depreciation has been provided on straight line method on the basis of rates in Schedule XIV of the Companies Act 1956 as per Notification No. 1/12/92-CL, V; Circular No. 14/93 dated 20.12.1993. Depreciation on library books has been charged @ 100 % on straight line method. Figures shown in brackets () in column 5 and 9 of Schedule II indicate deduction from Gross Block and Depreciation respectively. Depreciation is charged for the whole year in the year of purchase and no depreciation is charged in the year of disposal/sale.

3. CAPITAL WORK IN PROGRESS

The work in progress is accounted on actual cost basis and includes payments made to contractors for work done and certified.

4. STORES, SPARES AND TOOLS

Stores, spares and tools are valued at cost.

5. PRIOR PERIOD ADJUSTMENTS

Income and expenditure in excess of Rs. 1000/- each for item relating to previous year / years is credited / debited as the case may be to this account.

6. PROVISIONS

- (i) Provision for known liability is created in respect of any expenditure if the value exceeds Rs. 1000/-.
- (ii) Provision for leave encashment on retirement in respect of regular employees is created as per Accounting Standard 15 issued by Institute of Chartered Accountant of India.
- (iii) Provision for bonus is created on adhoc basis as declared by Central Government in previous year in respect of autonomous bodies.
- (iv) Provision for pension contribution / gratuity has been made as per IWAI Employees Pension Fund Regulations, 1993.

7. TREATMENT OF GRANTS

The Authority will have no revenue generation except for grant from the Govt. till such time National Waterways become fully operational for public use and tariff rates, levies and fees are fixed. As such, out of grants received from the Government, expenditure incurred on revenue account is classified as revenue grant, payments towards assets are classified as capital grant and balance, if any, are treated as grants received in surplus (under current liabilities).

For and on behalf of the Authority

Sd/-
(S. Jayaraman)
Chief Accounts Officer

Sd/-
(S.C. Srivastava)
Member (Cargo & Finance)

Sd/-
(Susheel Kumar)
Vice-Chairman

Sd/-
(S.B. Mathur)
Chairman

INLAND WATERWAYS BALANCE SHEET AS

PREVIOUS YEAR (RUPEES)	CAPITAL & LIABILITIES	SCHEDULE NO.	CURRENT YEAR (RUPEES)	
1	2	3	4	5
	CAPITAL			
9,437,244	Capital u/s 11(i)(c)		9,437,244	
2,561,034,163	Capital Grant u/s 18		3,221,695,278	
(352,466,988)	Less replacement reserve		(413,390,796)	
(4,669,520)	Lease rent written off		(5,083,426)	2,812,658,300
	RESERVES & SURPLUS			
3,463,144	Capital Reserves			
(3,463,144)	Deduction			
	BORROWINGS			
	CURRENT LIABILITIES & PROVISIONS.			
108,595,962	Current Liabilities	I	344,523,567	
123,742,811	Provisions		33,400,388	
41,510,905	Deposits held on account of others		53,488,531	431,412,486
2,487,184,577	TOTAL			3,244,070,786

Schedule I to VII form an integral part of accounts.

Sd/-
(S. JAYARAMAN)
Chief Accounts Officer

Sd/-
(S.C.SRIVASTAVA)
Member (Cargo & Finance)

AUTHORITY OF INDIA ON 31ST MARCH 2007

PREVIOUS YEAR (RUPEES)	PROPERTY & ASSETS	SCHEDULE NO.	CURRENT YEAR (RUPEES)	
			9	10
6	7	8		
	FIXED ASSETS	II		
1,477,293,968 (355,930,132)	Gross Block Less Depreciation		1,575,180,733 (416,853,940)	
	Net Block			1,158,326,793
324,266,077	Advavce for capital works			783,818,456
26,582,684 (4,669,520)	Lease land Less written off		26,582,684 (5,083,426)	21,499,258
742,328,678	Capital work-in-progress			845,550,649
	INVESTMENTS (AT COST)			
	CURRENT ASSETS, LOANS & ADVANCES	III		
42,346,920	Stores, Spares & Tools (At Cost)		40,920,324	
	Sundry Debtors		-	
45,901,416	Deposits, Loans & Advances		86,038,368	
189,064,486	Cash & Bank Balances		307,916,938	434,875,630
	MISC. EXPENDITURE			
	Income & Expenditure Account (Debit Balance)			-
2,487,184,577	TOTAL			3,244,070,786

For and on behalf of the Authority

Sd/-
(SUSHEEL KUMAR)
Vice-Chairman

Sd/-
(S.B. MATHUR)
Chairman

INLAND WATERWAYS INCOME & EXPENDITURE ACCOUNT FOR

PREVIOUS YEAR (RUPEES)	EXPENDITURE	SCHEDULE NO.	CURRENT YEAR (RUPEES)	
1	2	3	4	5
	OPERATIONAL & MAINTENANCE EXPENSES	IV		
116,442,637	Pay & Allowances & other staff costs		52,134,575	
20,595,057	Surveying		28,595,137	
25,895,106	Dredging		31,670,795	
20,584,443	Bandalling		28,159,913	
14,965,558	Aids to Navigation & Channel Marking		14,585,068	
12,975,285	Terminal Facilities		13,283,558	
13,558,597	Repairs of Vessels		17,753,251	
5,771,386	Training Institute NINI		2,525,139	
15,813,193	Night Navigation		25,531,001	
-	Maintenance of lock		2,198,737	
2,070,492	Bank Protection		11,841,147	
-	River Training Work		873,361	
8,008,719	Other Administrative & Misc. Expenses		9,396,361	238,548,043
	ADMINISTRATIVE EXPENSES			
54,181,572	Pay & Allowances & Other Staff Costs	V		28,411,173
10,331,556	General & Other Expenses	VI		12,478,458
	Financing Charges			
6,716	Bank Commission/Charges			52,890
11,576,683	Technical Studies & Consultancy Charges			12,056,099
50,876	BOT Expenses			2,210,000
59,231,587	Depreciation			63,854,522
4,214,189	Subsidy			8,789,075
5,338,607	Loss on sale/ valuation/ written off of assets			408,942
12,053,916	IWT Promotional Activities			14,350,692
6,278,546	Prior Period Adjustment account			306,684
419,944,721	TOTAL			381,466,578

Sd/-
(S. JAYARAMAN)
Chief Accounts Officer

Sd/-
(S.C.SRIVASTAVA)
Member (Cargo & Finance)

AUTHORITY OF INDIA

THE YEAR ENDED 31ST MARCH 2007

PREVIOUS YEAR (RUPEES)	INCOME	SCHEDULE NO.	CURRENT YEAR (RUPEES)	
			9	10
6	7	8	9	10
355,288,049	Revenue Grant from Govt			306,224,955
3,222,090	Interest/ Income			3,065,441
-	Pilotage Charges			
372,350	Berthing Charge			551,218
885,700	Others			1,752,596
884,945	Misc. Receipts			5,957,846
60,000	Rent terminal			60,000
30,517	Capital reserve as per Contra			—
59,201,070	Replacement reserve as per Contra			63,854,522
419,944,721	TOTAL			381,466,578

For and on behalf of the Authority

Sd/-
(SUSHEEL KUMAR)
Vice-Chairman

Sd/-
(S.B. MATHUR)
Chairman

OTHER SCHEDULES & AUDIT REPORT

SCHEDULE - I

CURRENT LIABILITIES & PROVISIONS AS ON 31.03.2007

Previous year (Rupees)	Particulars	Current Year (Figure in rupees)	
	(A) CURRENT LIABILITIES		
1,106,744	(i) Liability for sundry Creditors	1,195,262	
92,184,707	(ii) Liability for Expenses	111,621,493	
13,473,388	(iii) Grant Received in surplus	229,787,318	
1,831,123	(iv) Others	1,919,494	344,523,567
	(B) PROVISIONS		
—	(i) Provision for Gratuity	1,948,777	
204,626	(ii) Provision for Leave Salary & pension contribution	480,513	
783,726	(iii) Provision for Bonus	753,798	
100,500,000	(iv) Provision for pension & gratuity contribution	4,068,631	
22,254,459	(iv) Provision for leave encashment.	26,148,669	33,400,388
	(C) DEPOSITS HELD ON ACCOUNT OF OTHER		
41,510,905	Sundry parties		53,488,531
273,849,678	TOTAL		431,412,486

For and on behalf of the Authority

Sd/-
(S. JAYARAMAN)
Chief Accounts Officer

Sd/-
(S.C.SRIVASTAVA)
Member (Cargo & Finance)

Sd/-
(SUSHEEL KUMAR)
Vice-Chairman

Sd/-
(S.B. MATHUR)
Chairman

INLAND WATERWAYS SCHEDULE OF FIXED

	PARTICULARS	GROSS BLOCK AS ON 01.04.2006	ADDITIONS DURING THE YEAR	ADJUSTMENT/ DEDUCTIONS	GROSS BLOCK AS ON 31.03.2007
					(3+4+5)
1	2	3	4	5	6
NOIDA	Survey Equipment	4,000,719	416,915		4,417,634
	Vehicles	2,438,875			2,438,875
	Furniture & Fixture	3,208,222	228,625		3,436,847
	Office Equipment	2,501,045	59,465	(592,962)	1,967,548
	Electric Installation	1,118,026			1,118,026
	Air Conditioners	3,398,382			3,398,382
	Water Coolers & Refrigerators	94,813			94,813
	Fans & Air-Coolers	1,157,802			1,157,802
	Generator Set	1,148,720			1,148,720
	Cycle	23,826	3,885		27,711
	Temporary Structure	502,260			502,260
	Library Books	646,804	90,586		737,390
	Computer	12,420,431	1,268,755		13,689,186
	Communication equip.	157,028	621,443		778,471
	Building	24,937,527			24,937,527
	Computer Software	248,869	408,539		657,408
	Residence Quarter	30,732,753			30,732,753
	TOTAL(A)	88,736,102	3,098,213	(592,962)	91,241,353
CALCUTTA	Haldia Terminal	16,834,252			16,834,252
	Vehicles	825,960			825,960
	Furniture & Fixture	389,859	77,433		467,292
	Office Equipment	274,467	80,307	(104,766)	250,008
	Electric Installation	3,060	22,523		25,583
	Survey Instruments	11,723,949	58,806		11,782,755
	Library Books	83,400	1,195		84,595
	Speed Boats	2,961,016	-		2,961,016
	Vessels Ordinary	58,736,385			58,736,385
	Fans & Air Coolers	35,615	18,428		54,043
	Communication Network	182,645	267,768		450,413
	Barges	9,203,375			9,203,375
	Cycles	1,290	2,050		3,340
	Vessel Dredging Unit	68,817,427			68,817,427
	Computers	1,152,681	87,900		1,240,581
	Computers Software		967,816		967,816
	NightNav. Equipment	21,430,864			21,430,864
	Air Conditioner	46,600			46,600
	Crane	-			-
	Generator Set		22,100		22,100
	TOTAL(B)	192,702,845	1,606,326	(104,766)	194,204,405

Sd/-
(S. JAYARAMAN)
Chief Accounts Officer

Sd/-
(S.C.SRIVASTAVA)
Member (Cargo & Finance)

AUTHORITY OF INDIA

ASSETS AS ON 31.03.2007

SCHEDULE - II

(FIGURES IN RUPEES)

DEPRECIATION		ADJUSTMENT ON ACCOUNT OF ASSETS SOLD/TRANSFERRED	TOTAL DEPRECIATION AS ON 31.3.2007	NET BLOCK AS ON 31.3.2007
AS ON 01.04.2006	FOR THE YEAR		(7+8+9)	(6-10)
7	8	9	10	11
1,376,049	209,838		1,585,887	2,831,747
1,411,591	197,637	(91,141)	1,518,087	920,788
1,754,434	179,143	187,687	2,121,264	1,315,583
930,895	85,714	(402,156)	614,453	1,353,095
410,477	50,624	(12,922)	448,179	669,847
944,438	160,433	1,980	1,106,851	2,291,531
-	-			
38,651	3,537	(1,993)	40,195	54,618
408,115	54,167	(7,497)	454,785	703,017
288,895	54,564	2	343,461	805,259
12,592	1,529	(1,326)	12,795	14,916
502,260	-		502,260	-
646,804	90,586		737,390	-
12,275,373	847,154	(2,445,944)	10,676,583	3,012,603
119,344	36,977		156,321	622,150
2,845,374	406,482		3,251,856	21,685,671
78,401	106,566		184,967	472,441
2,003,776	500,944		2,504,720	28,228,033
26,047,469	2,985,895	(2,773,310)	26,260,054	64,981,299
8,620,609	799,627		9,420,236	7,414,016
515,815	74,390		590,205	235,755
220,839	28,609		249,448	217,844
131,951	11,409	(39,815)	103,545	146,463
1,740	1,215		2,955	22,628
6,652,850	277,090		6,929,940	4,852,815
83,400	1,195		84,595	-
1,529,530	132,380		1,661,910	1,299,106
35,507,591	1,960,141		37,467,732	21,268,653
11,142	2,566		13,708	40,335
127,791	21,395		149,186	301,227
2,183,206	307,393		2,490,599	6,712,776
728	236		964	2,376
65,376,556			65,376,556	3,440,871
569,267	175,714		744,981	495,600
	156,883		156,883	810,933
4,707,229	1,017,967		5,725,196	15,705,668
7,729	2,213		9,942	36,658
			-	-
	1,050	1,050	2,100	20,000
126,247,973	4,971,473	(38,765)	131,180,681	63,023,724

For and on behalf of the Authority

Sd/-
(SUSHEEL KUMAR)
Vice-Chairman

Sd/-
(S.B. MATHUR)
Chairman

INLAND WATERWAYS SCHEDULE OF FIXED

	PARTICULARS	GROSS BLOCK AS ON 01.04.2006	ADDITIONS DURING THE YEAR	ADJUSTMENT/ DEDUCTIONS	GROSS BLOCK AS ON 31.03.2007
					(3+4+5)
1	2	3	4	5	6
PATNA	Land	13,556,092			13,556,092
	Vehicle	1,156,429			1,156,429
	Furniture & Fixture	3,824,806	5,077		3,829,883
	Office Equipment	851,840	-	34,029	885,869
	Electric Installation	30,916			30,916
	Air Conditioners	725,495		(57,546)	667,949
	Fans & Air Coolers	32,925			32,925
	Water Coolers & Refrigerators	-	150,766	23,517	-
	Generator Set	177,149			351,432
	Survey Instruments	719,333			719,333
	Vessels: Dredging Unit	14,098,696	5,454,374	(31,111)	19,521,959
	Vessels: Ordinary	253,298,706			253,298,706
	Speed Boat	64,074,225			64,074,225
	Barges	2,442,151			2,442,151
	Temporary Structure	75,750,520			75,750,520
	Cycle	170,050			170,050
	Computer	2,672			2,672
	Library Books	3,800,393	16,202		3,800,393
	Survey Equip(compu)	48,590	1,704,400		64,792
	Survey Pillars	1,704,400	2,310,912		4,015,312
	Communication Equip.	274,419	267,769		274,419
	Building	785,132	6,498,000		1,052,901
	CRANE	48,052,748			54,550,748
		44,807,338			44,807,338
	TOTAL (C)	530,385,025	14,703,100	(31,111)	545,057,014
GUWAHATI	Communication Equipment	1,192,207	267,769		1,459,976
	Vehicles	590,523			590,523
	Furniture & Fixture	524,730			524,730
	Office Equipment	272,032			272,032
	Electric Installation	29,479			29,479
	Fans & Air-Coolers	17,416			17,416
	Survey Instruments	8,108,578	5,296,038	(4,090)	13,400,526
	Cycle	680			680
	Library Books	17,538	4,671		22,209
	Vessel Speed Boat	3,155,336	-		3,155,336
	Generator Set	36,100			36,100
	Computer	2,546,613	718,843		3,265,456
	Terminals- Pandu	6,679,549			6,679,549
	Night Navigation Equip.	12,254,264		(66,150)	12,188,114
	Barges	89,852,395			89,852,395
	Vessels - Ordinary	75,691,770	57,053,428		132,745,198
	Pandu Terminal	1			1
	Vessels Dredging Unit	114,608,130	34,000		114,642,130
	CRANE	44,969,796			44,969,796
	Air Conditioner	25,950			25,950
	TOTAL (D)	360,573,087	63,374,749	(70,240)	423,877,596

Sd/-
(S. JAYARAMAN)
Chief Accounts Officer

Sd/-
(S.C.SRIVASTAVA)
Member (Cargo & Finance)

AUTHORITY OF INDIA

ASSETS AS ON 31.03.2007

SCHEDULE - II

(FIGURES IN RUPEES)

DEPRECIATION		ADJUSTMENT ON ACCOUNT OF ASSETS SOLD/TRANSFERRED	TOTAL DEPRECIATION AS ON 31.3.2007	NET BLOCK AS ON 31.3.2007
AS ON 01.04.2006	FOR THE YEAR		(7+8+9)	(6-10)
7	8	9	10	11
-			-	13,556,092
1,047,902	41,931	(126,289)	963,544	192,885
866,933	242,432		1,109,365	2,720,518
244,963	42,079	3,232	290,274	595,595
24,716	1,469		26,185	4,731
110,012	31,728	(5,466)	136,274	531,675
26,379	1,564		27,943	4,982
-			-	-
25,355	16,693	16,556	58,604	292,828
111,327	34,168		145,495	573,838
7,253,117	943,447	22,250	8,218,814	11,303,145
85,758,798	17,730,909		103,489,707	149,808,999
7,435,352	2,140,079		9,575,431	54,498,794
870,310	172,660		1,042,970	1,399,181
10,816,400	2,530,067		13,346,467	62,404,053
170,050			170,050	-
2,538			2,538	134
3,040,064	615,664		3,655,728	144,665
48,590	16,202		64,792	-
779,818	650,481		1,430,299	2,585,013
109,992	9,166		119,158	155,261
550,746	50,013		600,759	452,142
2,424,004	889,177	-	3,313,181	51,237,567
3,263,599	1,496,565		4,760,164	40,047,174
124,980,965	27,656,494	(89,717)	152,547,742	392,509,272
634,827	69,189		704,016	755,960
412,440	24,761		437,201	153,322
288,025	29,728		317,753	206,977
85,984	12,873		98,857	173,175
15,529	1,309		16,838	12,641
12,897	657		13,554	3,862
2,214,128	632,523	(388)	2,846,263	10,554,263
646			646	34
17,538	4,671		22,209	-
377,211	223,082		600,293	2,555,043
13,720	1,715		15,435	20,665
1,448,760	466,769		1,915,529	1,349,927
784,761	317,279		1,102,040	5,577,509
1,769,719	578,936	(6,284)	2,342,371	9,845,743
7,949,026	3,001,071		10,950,097	78,902,298
8,736,025	5,451,889		14,187,914	118,557,284
-			-	1
31,097,581	8,024,949		39,122,530	75,519,600
1,501,991	1,501,991		3,003,982	41,965,814
4,932	1,233		6,165	19,785
57,365,740	20,344,625	(6,672)	77,703,693	346,173,903

For and on behalf of the Authority

Sd/-
(SUSHEEL KUMAR)
Vice-Chairman

Sd/-
(S.B. MATHUR)
Chairman

INLAND WATERWAYS SCHEDULE OF FIXED

	PARTICULARS	GROSS BLOCK AS ON 01.04.2006	ADDITIONS DURING THE YEAR	ADJUSTMENT/ DEDUCTIONS	GROSS BLOCK AS ON 31.03.2007
					(3+4+5)
1	2	3	4	5	6
BHAGALPUR	Buoys	54,467			54,467
	Vehicle	152,658			152,658
	Furniture & Fixtures	94,913	-	24,271	119,184
	Office Equipment	41,275			41,275
	Electric Installation	3,227			3,227
	Fans & Air Coolers	5,899			5,899
	Survey Instruments	2,197,143			2,197,143
	Barges	561,255			561,255
	Cycle	701			701
	Library Books	12,546	2,185		14,731
	Communication Equipment	157,026			157,026
	Land	36,734			36,734
	Computers	156,580			156,580
	TOTAL(E)	3,474,424	2,185	24,271	3,500,880
KOCHI	Vehicle	383,614	-		383,614
	Furniture & Fixtures	489,798	98,503		588,301
	Office Equipment	229,292	-		229,292
	Fans & Air Coolers	12,275	29,200		41,475
	Air-Conditioner	55,595	12,000		67,595
	Survey Instruments	4,377,179	5,326,569	(124,890)	9,578,858
	Communication Equipment	466,958	267,769		734,727
	Generator		332,369		332,369
	Computer	2,244,004	884,908		3,128,912
	Survey Launch	4,983,591	-		4,983,591
	SPEED BOATS	1,120,418	-	-	1,120,418
	Land (Terminals)	76,449,887	-		76,449,887
	Land Widening	96,557,525	-		96,557,525
	Library Books	10,700	6,742		17,442
	Terminal	86,101,928	5,423,453		91,525,381
	Dredger	3,510,568	43,750		3,554,318
	Night Navigation	15,533,730	-		15,533,730
	Foot Over Bridge Thottappally		2,109,000		2,109,000
	Tempory Terminal	530,360	666,010		1,196,370
	TOTAL(F)	293,057,422	15,200,273	(124,890)	308,132,805
ALLAHABAD	Land - Terminal	2,405,763			2,405,763
	Computer	229,349			229,349
	Furniture & Fixtures	166,441			166,441
	Office Equipment	67,304			67,304
	Fans & Air Coolers	12,155			12,155
	Library Books	8,359	4,066		12,425
	Vehicle	387,681			387,681
	Electrical Installation	24,950			24,950
	Survey Instruments	3,312,713	3,500	131,730	3,447,943
	TOTAL(G)	6,614,715	7,566	131,730	6,754,011

Sd/-
(S. JAYARAMAN)
Chief Accounts Officer

Sd/-
(S.C.SRIVASTAVA)
Member (Cargo & Finance)

AUTHORITY OF INDIA

ASSETS AS ON 31.03.2007

SCHEDULE - II

(FIGURES IN RUPEES)

DEPRECIATION		ADJUSTMENT ON ACCOUNT OF ASSETS SOLD/TRANSFERRED	TOTAL DEPRECIATION AS ON 31.3.2007	NET BLOCK AS ON 31.3.2007
AS ON 01.04.2006	FOR THE YEAR		(7+8+9)	(6-10)
7	8	9	10	11
44,851	2,587		47,438	7,029
151,776			151,776	882
75,586	7,544	1,153	84,283	34,901
26,664	1,961		28,625	12,650
1,280	153		1,433	1,794
4,254	280		4,534	1,365
729,387	104,364		833,751	1,363,392
357,970	39,288		397,258	163,997
650			650	51
12,546	2,185		14,731	-
121,227	7,459		128,686	28,340
			-	36,734
148,751	-		148,751	7,829
1,674,942	165,821	1,153	1,841,916	1,658,964
214,521	36,443		250,964	132,650
243,714	36,665		280,379	307,922
77,059	10,893		87,952	141,340
5,788	1,912		7,700	33,775
18,370	3,211		21,581	46,014
2,135,911	445,171	(29,660)	2,551,422	7,027,436
81,491	34,900		116,391	618,336
	15,788		15,788	316,581
1,428,760	443,193		1,871,953	1,256,959
1,286,611	166,452		1,453,063	3,530,528
79,214	79,214		158,428	961,990
-	-		-	76,449,887
-	-		-	96,557,525
10,700	6,742		17,442	-
8,949,779	4,347,454		13,297,233	78,228,148
1,116,992	248,802		1,365,794	2,188,524
1,468,674	737,852		2,206,526	13,327,204
	100,178		100,178	2,008,822
530,360	666,010		1,196,370	-
17,647,944	7,380,879	(29,660)	24,999,164	283,133,641
-			-	2,405,763
121,507	26,470		147,977	81,372
53,931	10,536		64,467	101,974
20,578	3,197		23,775	43,529
2,163	577		2,740	9,415
8,359	4,066		12,425	-
184,150	36,830		220,980	166,701
5,925	1,185		7,110	17,840
1,274,751	130,531	6,257	1,411,539	2,036,404
1,671,364	213,392	6,257	1,891,013	4,862,998

For and on behalf of the Authority

Sd/-
(SUSHEEL KUMAR)
Vice-Chairman

Sd/-
(S.B. MATHUR)
Chairman

INLAND WATERWAYS SCHEDULE OF FIXED

	PARTICULARS	GROSS BLOCK AS ON 01.04.2006	ADDITIONS DURING THE YEAR	ADJUSTMENT/ DEDUCTIONS	GROSS BLOCK AS ON 31.03.2007
1	2	3	4	5	6
					(3+4+5)
VARANASI	Furniture & Fixtures	101,821			101,821
	Computer	64,380	4,500		68,880
	Office Equipment	51,252			51,252
	Fans & Air Coolers	5,875			5,875
	Vehicle	243,069			243,069
	Communication Equipment	59,764			59,764
	Survey Instruments	1,224,187	657,821		1,882,008
	TOTAL(H)	1,750,348	662,321	-	2,412,669
	GRAND TOTAL (A+B+C+D+E+F+G+H)	1,477,293,968	98,654,733	(767,968)	1,575,180,733
	PREVIOUS YEAR	1,093,248,379			1,259,492,196

Sd/-
(S. JAYARAMAN)
Chief Accounts Officer

Sd/-
(S.C.SRIVASTAVA)
Member (Cargo & Finance)

AUTHORITY OF INDIA

ASSETS AS ON 31.03.2007

SCHEDULE - II

(FIGURES IN RUPEES)

DEPRECIATION		ADJUSTMENT ON ACCOUNT OF ASSETS SOLD/TRANSFERRED	TOTAL DEPRECIATION AS ON 31.3.2007	NET BLOCK AS ON 31.3.2007
AS ON 01.04.2006	FOR THE YEAR		(7+8+9)	(6-10)
7	8	9	10	11
25,681	6,445		32,126	69,695
41,744	11,165		52,909	15,971
8,646	2,434		11,080	40,172
837	279		1,116	4,759
92,368	23,092		115,460	127,609
9,203	3,133		12,336	47,428
115,256	89,395		204,651	1,677,357
293,735	135,943	-	429,678	1,982,991
355,930,132	63,854,522	(2,930,714)	416,853,940	1,158,326,793
242,109,069	55,849,499		297,717,753	961,774,443

For and on behalf of the Authority

Sd/-
(SUSHEEL KUMAR)
Vice-Chairman

Sd/-
(S.B. MATHUR)
Chairman

SCHEDULE - III
CURRENT ASSETS, LOANS & ADVANCES AS ON 31.3.2007

Previous year (Rupees)	Particulars	Current Year (Figure in rupees)	
	a) STORES, SPARES & TOOLS (AT COST)		
34,971,818	1) Marine Spare Parts	34,948,628	40,920,324
504,892	2) Permanent Stores	490,340	
153,468	3) Consumables & Marking Material	70,080	
180,419	4) Stationary	204,842	
6,217,970	5) POL Stock	4,850,265	
318,353	6) Others	356,169	
	b) SUNDRY DEBTORS		
	1) Secured		869,856,824
	2) Unsecured		
	— Considered Good		
	1) more than 6 months		
	2) less than 6 months		
	— Considered Doubtful		
	c) DEPOSITS, LOANS & ADVANCES		
12,407,385	1) Advance to staff	11,146,928	
221,804	2) Departmental Advance	173,985	
324,266,077	3) Advance to Contractors & Suppliers—Capital	783,818,456	
13,351,308	—Others	57,408,651	
4,088,322	4) Deposits	4,322,240	
10,392,041	5) Claims Recoverable	8,090,238	
337,031	6) Prepaid Expenses	68,046	
5,103,525	7) Others	4,828,280	
	d) CASH & BANK BALANCES		
12,820	1) Cash/Stamps in-hand	58,745	307,916,938
189,051,666	2) Cash with Scheduled Banks	(297,423,807)	
-	3) Remittance in transit	7,770,000	
-	4) Short term deposit	597,512,000	
601,578,899	TOTAL		1,218,694,086

For and on behalf of the Authority

Sd/-
(S. JAYARAMAN)
Chief Accounts Officer

Sd/-
(S.C.SRIVASTAVA)
Member (Cargo & Finance)

Sd/-
(SUSHEEL KUMAR)
Vice-Chairman

Sd/-
(S.B. MATHUR)
Chairman

SCHEDULE - IV

**OPERATIONAL AND MAINTENANCE EXPENSES
FOR THE YEAR ENDED 31-3-2007**

Previous year (Rupees)	Particulars	Current Year (Figure in rupees)	
	NATIONAL WATERWAY NO.1		
93,015,083	1. Pay & Allowances & Other Staff Costs		40,784,606
	2. Works Expenses		
11,824,446	(i) Surveying	16,040,381	
10,192,596	(ii) Dredging	15,178,552	
9,003,167	(iii) Bandalling	10,298,689	
9,875,694	(iv) Aids to navigation & Channel marking	9,786,210	
8,254,509	(v) Terminal Facilities	6,614,979	
10,870,281	(vi) Repairs of Vessels	11,823,299	
5,279,087	(vii) Night Navigation	10,488,246	
5,771,386	(viii) Training Expenses	2,525,139	82,755,495
5,647,777	3. Other Administrative & Misc. Expenses		6,863,506
	NATIONAL WATERWAY NO.2		
13,162,605	1. Pay & Allowances & Other Staff Costs		6,408,436
	2. Works Expenses		
6,754,136	(i) Surveying	8,386,249	
11,581,276	(ii) Bandalling	17,861,224	
4,619,992	(iii) Aids to navigation & Channel marking	3,743,227	
3,299,052	(iv) Terminals	4,353,030	
4,670,065	(v) Dredging	4,893,736	
2,475,194	(vi) Repairs of Vessels	3,773,876	
7,956,890	(vii) Night Navigation	11,151,529	
—	(viii) River Training Work	873,361	55,036,232
986,412	3. Other Administrative & Misc. Expenses		1,178,803

Contd....

SCHEDULE - IV
**OPERATIONAL AND MAINTENANCE EXPENSES
FOR THE YEAR ENDED 31-3-2007**

Previous year (Rupees)	Particulars	Current Year (Figure in rupees)	
	NATIONAL WATERWAY NO.3		
	1. Pay & Allowances & Other		
10,264,949	Staff Costs		4,941,533
	2. Works Expenses		
2,016,475	(i) Surveying	4,168,507	
11,032,445	(ii) Dredging	11,598,507	
469,872	(iii) Channel marking	1,055,631	
2,577,216	(iv) Night Navigation	3,891,226	
1,421,724	(v) Terminal Facilities	2,315,549	
213,122	(vi) Repair of vessel	2,156,076	
-	(vii) Maintenance of lock gate	2,198,737	
2,070,492	(viii) Bank Protection	11,841,147	39,225,380
1,374,530	3. Other Administrative & Misc. Expenses	-	1,354,052
256,680,473	TOTAL		238,548,043

For and on behalf of the Authority

 Sd/-
(S. JAYARAMAN)
Chief Accounts Officer

 Sd/-
(S.C.SRIVASTAVA)
Member (Cargo & Finance)

 Sd/-
(SUSHEEL KUMAR)
Vice-Chairman

 Sd/-
(S.B. MATHUR)
Chairman

SCHEDULE - V

**PAY & ALLOWANCES & OTHER STAFF COSTS
FOR THE YEAR ENDED 31-3-2007**

Previous year (Rupees)	Particulars	Current Year (Figure in rupees)
	PAY & ALLOWANCES & OTHER STAFF COSTS	
16,320,806	i) Pay & Allowances	19,051,886
29,750	ii) Honorarium	7,500
1,706,827	iii) Medical Reimbursement	1,906,035
37,032	iv) Daily Wages	89,847
296,841	v) OTA	304,149
194,409	vi) Bonus	185,025
-	vii) Leave Salary & Pension	
147,310	Contribution	480,513
1,849,075	viii) Rent for Residence	1,592,077
4,101	ix) Liveries	48,115
358,223	x) Staff Welfare Expenses	428,277
25,910	xi) Tuition fees	18,640
32,248,714	xii) Pension & Gratuity Contribution	2,298,833
574,521	xiii) Leave Encashment	1,638,125
388,053	xiv) LTC Exp.	362,151
54,181,572	TOTAL	28,411,173

For and on behalf of the Authority

Sd/-
(S. JAYARAMAN)
Chief Accounts Officer

Sd/-
(S.C.SRIVASTAVA)
Member (Cargo & Finance)

Sd/-
(SUSHEEL KUMAR)
Vice-Chairman

Sd/-
(S.B. MATHUR)
Chairman

SCHEDULE - VI
GENERAL & OTHER EXPENSES FOR THE YEAR ENDED 31.3.2007

Previous year (Rupees)	Particulars	Current Year (Figure in rupees)
1,913,583	i) Repairs & Maintenance	2,132,342
126,607	ii) Staff Recruitment Expenses	
755,272	iii) Postage, Telephone & Telegram	919,303
828,551	iv) Printing & Stationery	910,077
1,330,531	v) Vehicle Running & Maintenance	1,570,056
45,725	vi) Advertisement & Publicity	84,081
220,697	vii) Conveyance Reimbursement	181,807
2,244,092	viii) Traveling Expenses —Inland	3,187,866
163,798	—Abroad	426,466
92,772	ix) Newspaper & Periodicals	103,383
53,120	x) Misc. Expenses	28,151
113,501	xi) Consumables	52,056
1,083,561	xii) Electricity & Water Charges	1,034,277
507,927	xiii) Audit Fees & expenses	768,796
590,747	xiv) Legal Charges	350,630
37,000	xv) Seminar & Workshop/Conference	346,233
183,668	xvi) Hindi Promotion	338,376
40,404	xvii) Authority meeting expenses	44,558
10,331,556	TOTAL	12,478,458

For and on behalf of the Authority

Sd/-
(S. JAYARAMAN)
Chief Accounts Officer

Sd/-
(S.C.SRIVASTAVA)
Member (Cargo & Finance)

Sd/-
(SUSHEEL KUMAR)
Vice-Chairman

Sd/-
(S.B. MATHUR)
Chairman

SCHEDULE - VII

NOTES FORMING PART OF ACCOUNTS AS ON 31.3.2007

1. Capital work in progress amounting to Rs. 8,455.51 lakhs (previous year Rs. 7423.29 lakhs) consists of following:

Name of Party	Purpose	Amount (Rs. in lakhs)
a) CPWD	Construction of Lower Level Jetty at Gaighat	2642.09
b) CPWD	Construction of Approach Road at Gaighat	53.17
c) CPWD	Construction of Lower Level Jetty at Pandu	2996.25
d) Neptune Marine (P) Ltd.	Construction of Work Boats	161.93
e) HDPE	Construction of cargo vessels	568.64
f) CPWD	Construction of high level jetty Pandu	191.12
g) HDPE	Construction of Hy. Surface dredger	460.24
h) CPWD	Construction of terminals in NW- 3	231.99
i) CPWD	Construction of high level jetty at Gaighat	32.45
j) HDPE	Construction of floating Dry Dock	349.20
k) NSDRC	Design and modification of Hy. Surface dredger	5.40
l) PWD – Assam	Construction of Jogigopa Terminal	25.00
m) A.C.ROY&CO	Construction of survey launches	662.59
n) CPWD	Study for construction of Haldia and BISN Jetty	22.90
o) Marine Electronic Navigation System	Supply of Raddars	52.54
Total		8455.51

2. During the year 2006-07, the Authority has incurred the following expenditure in respect of Chairman and full time Members:

Salary	House Rent	Leave Salary & pension contribution	Medical reimbursement	Travelling Expenses		Total
				Foreign	Inland	
15,14,011	3,47,510	4,80,513	28,865	4,26,466	27,92,496	50,71,471
Previous Year						
12,88,118	7,63,239	4,90,109	340,948	1,63,798	14,44,010	44,90,222

During the year Chairman, IWAI has visited Switzerland, Strasbourg and Mainz to discuss various technical matters with eminent institutions involved in the navigation of the Rhine between 19.11.2006 to 26.11.2006 and a sum of Rs. 4.26 lakhs was spent.

3. Land costing Rs. 244.49 lakhs (previous year Rs. 244.49 lakhs) was acquired during 1993-94 for construction of R&D-cum-Office complex at Noida on lease hold basis for 90 years and Rs. 2.72 lakhs (previous year Rs. 2.72 lakhs) is being written off every year.
4. (i) During the year the ITAT has given decision for the assessment year 1988-89 to 1997-98 (excluding Assessment year 1990-91) ruling that the grant of the authority is a capital grant hence not taxable. While giving effect to ITAT order, ACIT, Noida has issued fresh assessment order in which the receipt of authority has been treated as income. Against the said order, authority has filed appeal with CIT (Appeals) Ghaziabad, and the same has been dismissed by the CIT (Appeals) Ghaziabad. Authority has filed further appeal with ITAT, New Delhi against the order of CIT.

(ii) ACIT Noida has also imposed penalty in response to fresh assessment orders as above and raised demand. An appeal against the said penalty orders has also been filed with CIT (Appeals), Ghaziabad, and the decision is awaited. In the mean time the Income tax department has given a refund of Rs. 362.55 lakhs based on ITAT decision and same was returned to Ministry. The department has also raised a demand of Rs. 9.44 crores plus interest u/s 220(2) after adjustment of refundable amount to the authority. The department is requested to keep in abeyance the demand till disposal of appeals.

(iii) The Income Tax department has also filed an appeal in High Court of Allahabad against the order of ITAT, New Delhi for the said nine assessment years.

(iv) The Authority has been registered under section 12A w.e.f. 1.4.1998 with Income Tax department. The authority got the exemption/notification u/s 10(23C)(iv) from CBDT w.e.f. Assessment Year 1998-99 to 2003-04 respectively. Further renewal of exemption u/s 10(23C)(iv) from the Assessment year 2004-05 onwards has already applied. The renewal is awaited.
5. A sum of Rs. 2,991- lakhs (previous year Rs. 2,516.90 lakhs) was released as deposit to Executive Engineer, Patna Central Division-II, CPWD in connection with construction of one General Cargo Berth at Gaihat, Patna and Rs. 357 lakhs (previous year Rs. 357 lakhs) for construction of National Inland Navigation Institute (NINI) at Patna. Out of this, a sum of Rs. 2,642.09 lakhs (previous year Rs. 2,498.27 lakhs) has been shown as capital work in progress at Gaihat Terminal and Rs. 535.68 lakhs has been capitalized towards final cost for construction of NINI.

6. A sum of Rs. 202.00 lakhs was paid to Govt. of Bihar towards cost of 6.5 acres of land for NINI in 1998. Out of the above, 2.20 acres land has not been delivered to IWAI so far. Govt. of Bihar has been asked to provide the balance land or refund the balance amount. Their reply is awaited. For this reason, proportionate cost of the land i.e. Rs. 68.33 lakhs has been shown as advance to Govt. of Bihar.
7. A sum of Rs. 993 lakhs (previous year Rs. 993 lakhs) towards cost of land for 11 terminal sites (area 12.4714 hectare) was made as advance payment to Govt. of Kerala till March 31, 2004. Out of this, 10.1039 hectares of land for 10 no. of terminals sites has been taken over and capitalized for Rs. 764.50 lakhs till March 31, 2007 (previous year Rs. 764 lakhs).
8. Till March 31, 2007, a sum of Rs. 1,622.50 lakhs (previous year Rs. 1,142.93 lakhs) towards cost of construction of 11 terminals in NW- 3 has been paid to CPWD. Out of this, Rs. 915.25 lakhs (previous year Rs. 861 lakhs) has been capitalized and Rs.231.23 lakhs (previous year Rs. 211 lakhs) has been shown as capital work in progress.
9. For acquisition of land for widening of canals in NW- 3 measuring 21.28 hect. an advance of Rs. 1221 lakhs (previous year Rs. 1221 lakhs) was released to Govt. of Kerala. Out of this, land value at Rs. 966 lakhs (area 21.259 hectares) has been received and therefore capitalized (previous year Rs. 966 lakhs).
10. A sum of Rs. 1,373 lakhs (previous year 458 lakhs) has been released as deposit to Executive Engineer, Patna Central Division – II, CPWD in connection with construction of high level general cargo berth at Gaighat, Patna. Out of this, a sum of Rs. 32.45 lakhs has been charged to Capital Works in Progress.
11. A sum of Rs. 1,770 lakhs (previous year NIL) has been released as deposit to CPWD – Guwahati in connection with construction of high level general cargo berth at Pandu, Guwahati out of this a sum of Rs. 191.12 lakhs has been charged to capital works in progress.
12. A sum of Rs. 1030 lakhs (previous year Rs. 1030 lakhs) has been released as deposit to NF Railway Guwahati in connection with construction of BG siding at Pandu Terminal, Guwahati and same has been shown as advance to contractor.
13. A sum of Rs. 35.20 lakhs (previous year Rs. 35.20 lakhs) has been released as advance to DM – Allahabad for acquisition of land for Allahabad Terminal. During the FY 2005-06, an amount of Rs. 24.06 lakhs towards cost of 8.759 hectare land has been capitalized.

14. A sum of Rs. 3,814 lakhs was released as deposit to Executive Engineer, CPWD, Guwahati in connection with construction of one lower level berth at Pandu, Guwahati. Out of this, a sum of Rs. 2,996.25 lakhs has been shown as Capital Work in Progress.
15. 53 nos. flats at Sector 34, Noida were taken over on 05.12.2002 from Director General of Light Houses & Light Ships (DGLL) Ministry of Shipping for staff of IWAI at a total transfer price of Rs. 225.28 lakhs plus transfer fee, stamp duty etc. The quarters have been taken over and repaired and allotted to IWAI employees. Hence, Rs. 307.33 lakhs (previous year Rs. 307.33 lakhs) has been capitalized. However, transfer in the name of IWAI could not be registered since the flats have not yet been registered in the name of first owner DGLL. After persuasion with DGLL for making payment of land rent, etc. to Noida, the initial registration is under process with Noida. Thereafter it will be transferred in the name of IWAI..
16. Two vessels namely MOT Tug III and Flat Turni have been declared condemned by the Authority. Their scrap value has been assessed as Rs. 18.75 lakhs and Rs. 7.05 lakhs respectively. For disposal of both the vessels, open tender had been called. Due to some reasons, the work was not awarded to the highest bidder. Highest bidder has filed a case in lower court against the decision of the Authority. The decision of court is awaited.
17. A Claim was lodged with M/s Oriental Insurance Co. for Rs. 34.47 lakhs towards loss of Buoys and Lights including penal interest in 2001. Insurance Company has agreed to claim of Rs. 23.93 lakhs only. Decision of Oriental Insurance Company is not acceptable to Authority and Authority has again asked the insurance company to settle the claim immediately.
18. There are two Arbitration cases pending before the Arbitrators. These cases relate to capital dredging works in NW-3 having a contingent liability of Rs. 19.74 Crores. Further, there are 4 cases in Hon. High Court of Kerala, 2 cases in lower courts of Noida and Balasore and 11 service related cases in the Hon. High Courts of Allahabad, Guwahati, Kolkata and Patna. Apart from the above, there are 392 cases (LAR) for payment of higher compensation for land acquisition estimated at Rs. 11.566 Cr. and 70 LAA cases in the High Court of Kerala estimated at Rs. 12.982 Cr. for development of NW-3.
19. Bank guarantees valued at Rs.824.01 lakhs have been received from the contractors / suppliers towards security deposit, Earnest money and mobilization advance against the works / contracts awarded to them till March 31, 2007.

20. The Surplus grant of Rs. 22.98 crores as per Schedule - I includes stores spares and tools of Rs. 4.09 crores, advance paid to IIPM Kolkata Rs. 1.15 crores, Payment to executive engineer inland navigation Division, Kollam Rs. 2.05 crores, irrigation department Kerala Rs. 1.19 crores, Kerala Water Authority Rs.0.33 crores.
21. Subsidy of Rs. 87.89 lakhs (previous year Rs. 42.14 lakhs) was released during FY-2006-07. Other claims of Rs.110.70 lakhs are under examination. Hence, there may be contingent liability of this extent.
22. As per Companies Act, depreciation rate for some fixed assets used for inland waterways has not been provided. Hence, Authority is charging depreciation on Barges @ 3.34%, Terminals @ 4.75% and Crane @ 3.34%.
23. Annual Accounts has been prepared as per Accounting Standards issued by the Institute of Chartered Accountants of India.
24. Re-grouping and re-classification has been done where considered necessary.
25. All the figures are rounded off to the nearest rupee.

For and on behalf of the Authority

Sd/-
(S. JAYARAMAN)
Chief Accounts Officer

Sd/-
(S.C.SRIVASTAVA)
Member (Cargo & Finance)

Sd/-
(SUSHEEL KUMAR)
Vice-Chairman

Sd/-
(S.B. MATHUR)
Chairman

Audit Report of the Comptroller & Auditor General of India on the Accounts of Inland Waterways Authority of India for the year ended 31st March 2007

We have audited the attached Balance Sheet of Inland Waterways Authority of India (Corporation) as at 31st March 2007 and the Income and Expenditure Account for the year ended on that date under Section 23 of the Inland Waterways Authority of India Act., 1985 (IWAI Act, 1985) and Rule 28(3) of the Inland Waterways Authority of India Rules, 1986 (IWAI Rules, 1986) as amended in 2002 vide Notification No. GSR 449 dated 10.10.2002. These financial statements include the accounts of units/branches of the Corporation. These financial statements are the responsibility of the Corporation's management. Our responsibility is to express an opinion on these financial statements based on our audit.

We have conducted our audit in accordance with auditing standards generally accepted in India. These standards require that we plan and perform the audit to obtain reasonable assurance about whether the financial statements are free from material misstatements. An audit includes examining, on a test basis, evidence supporting the amounts and disclosure in the financial statements. An audit also includes assessing the accounting principles used and significant estimates made by management, as well as evaluating the overall presentation of financial statements. We believe that our audit provides a reasonable basis for our opinion.

Based on our audit, we report that:

- i) We have obtained all the information and explanations, which to the best of our knowledge and belief were necessary for the purpose of our audit;
- ii) The Balance Sheet and Income and Expenditure Account dealt with by this report have been drawn up in the format approved by the Government of India under Section 34 (2) (g) of the IWAI Act, 1985 and Rule 28(2) of IWAI Rules, 1986.
- iii) In our opinion, proper books of accounts and other relevant records have been maintained by the Corporation as required under Section 34(2) (G) of the IWAI Act, 1985 in so far as it appears from our examination of such books except that:

A. General

- (1) Ministry's directives (February 2005) regarding inclusion of note in the Notes to Accounts on Member's Responsibility Statement and formation of an Audit Committee as a measure of good corporate governance, have not been complied with.
- (2) **Note forming part of accounts (Schedule VII)**

No disclosures have been made:

- (i) that the Authority is liable to pay interest to the landowners for acquisition of land for NW 3 as per orders of High Court.
- (ii) that the contract with HDPE for construction of floating Dry Dock against which an amount of Rs. 3.49 crore has been shown as capital work-in-progress has been cancelled.

B. Balance Sheet

- (1) **Fixed Assets (Schedule – II)**
Net Block – Rs. 115.83 crore

This is overstated by Rs. 44.35 lakh due to inclusion of damaged and beyond economical repair Ferro Reinforced Plastic buoys (Rs. 40.33 lakh) and equipments (Rs. 4.02 lakh). The Authority has not made any provision in the accounts for the damaged buoys/equipment.

Consequently expenditure is understated by the same amount.

- (2) **Capital work in Progress – Rs. 84.56 crore**

This is understated by Rs. 2.35 crore due to non inclusion of value of capital works completed before 31st March 2007 in respect of construction of Approach road and Boundary wall of Jogighopa terminal (Rs. 1.61 crore), earth filled work at Jogighopa terminal (Rs. 52.50 lakh) and fabrication of one pontoon gangway by PWD Allahabad (Rs. 21.62 lakh).

Consequently 'Advance for capital works' is overstated by the same amount.

(3) Current Assets, Loans and Advances (Schedule III)

Advance to Contractors and Suppliers - Capital – Rs. 78.38 crore

This is overstated by Rs. 13.14 crore due to inclusion of payments to CPWD (Rs. 12.94 crore) and Indian Institute of Technology, Guwahati (Rs. 20 lakh) since the cheques were handed over to them in April 2007 towards (i) cost of construction of low level jetty and high level jetty respectively at Pandu, Guwahati (ii) consultancy charges for river training works in NW -2

Consequently ‘Cash and Bank Balances’ are also understated by the same amount.

(4) Subject to our observations in the preceding paragraphs, we report that the Balance Sheet and Income and Expenditure Account dealt with by this report are in agreement with the books of accounts.

(5) In our opinion and to the best of our information and according to the explanations given to us, the said financial statements read together with the Accounting Policies and Notes on Accounts, and subject to the significant matters stated above and other matters mentioned in *Annexure-I* to this Audit Report give a true and fair view in conformity with accounting principles generally accepted in India:

a. In so far as it relates to the Balance Sheet, of the state of affairs of the Corporation as at 31st March 2007; and

b. In so far as it relates to Income and Expenditure Accounts, of the income/expenditure for the year ended on that date.

A review of accounts showing the summarized financial results of the Corporation for the last three years is given in *Annexure-II*.

**For and on behalf of the
Comptroller & Auditor General of India**

Sd/-

(J. Wilson)

**(Principal Director of Commercial Audit &
ex-officio Member, Audit Board – I
New Delhi**

Place: New Delhi

Date: 29 October 2007

Annexure – I

- 1. Adequacy of Internal Audit System:** The periodicity and extent of coverage of Internal Audit by the firm of Chartered Accountants were not adequate and commensurate with the size and nature of the business of the Authority. The Authority does not have an Internal Audit Manual. The Internal Audit reports were not submitted to the Chairman.

The internal audit manual should have been prepared and the internal audit report submitted to Chairman. Internal audit system needs to be strengthened.

- 2. Adequacy of Internal Control System:** Internal control system was not adequate. No periodical monitoring of the projects was being undertaken. No MIS was being generated for information of the Management with regard to implementation and status of projects. The Authority does not have an Accounting and Works Manual.
- 3. System of Physical Verification of fixed Assets:** The fixed assets have been physically verified by the Management annually.
- 4. System of Physical Verification of Inventory:** The inventory has been physically verified by the Management annually.
- 5. Regularity in payment of Statutory dues :** No statutory dues were outstanding for more than six months except for a demand from Income Tax Department amounting to Rs. 9.44 crore for the assessment years 1988 – 89 to 1997 – 98 (excluding assessment year 1990 – 91) The matter is pending in High Court of Allahabad. (Refer Note No. 4 of Notes forming part of Accounts.)

Annexure –II

**SUMMARISED FINANCIAL RESULTS OF INLAND WATERWAYS
AUTHORITY OF INDIA FOR THE YEAR ENDED 31ST MARCH BY THE
COMPTROLLER AND AUDITOR GENERAL OF INDIA**

1. FINANCIAL POSITION

The table below summarise the financial position of Authority under broad headings for the last three years.

(Rupees in crore)			
Liabilities	2004-05	2005-06	2006-07
a) Capital under section 11(1) (c) of the Act.	0.94	0.94	0.94
b) Capital grant under Section 18 of the Act			
i) Capital Grant less Replacement Reserve and lease rent written off	181.41	220.39	280.32
ii) Loans	-	-	
c) Reserves & Surplus			
i) Free reserve	-	-	-
ii) Capital Reserve	-	-	-
d) i) Current Liabilities & Provisions	28.90	27.38	42.95
ii) Provision for gratuity	0.17	-	0.19
Total	211.42	248.71	324.40
Assets			
e) Gross Block	125.95	147.73	157.52
f) Less: Cumulative Depreciation	29.77	35.59	41.69
g) i) Net Block	96.18	112.14	115.83
ii) Leasehold land	2.23	2.19	2.15
h) Capital Work in Progress	59.46	74.23	84.55
i) Current Assets, Loans & Advances	53.55	60.15	121.87
j) Miscellaneous Expenditure (Income & Expenditure Account)	-	-	-
Total	211.42	248.71	324.40

k) Working Capital {i-d (i) & d (ii)}	24.65	32.77	78.73
l) Capital Employed (g+k)	123.06	147.10	196.71
m) Net Worth {a+c (i)-j}	0.94	0.94	0.94
n) Net Worth per Rupee of Capital under Section 11 (c) of Act (m ÷ a)	1	1	1

2. LIQUIDITY

Percentage of Current Assets to Current Liabilities and Provisions (excluding gratuity provision) which is a measure of liquidity was 185.29, 219.68 and 283.75 during 2004-05, 2005-06 and 2006-07 respectively.

3. SOURCES AND UTILISATION OF FUNDS

Fund amounting to Rs. 59.93 crore from external sources were generated and utilized by the Authority during the year as per details given below:-

A. Sources of funds	(Rupee in crore)
i) Increase in Capital Grant	59.93
Total	59.93
B. Utilization of funds	
i) Increase in fixed Assets (net)	3.65
ii) Increase in Capital Work in Progress	10.32
iii) Increase in working Capital	45.96
Total	59.93

Sd/-

(J. Wilson)

**Principal Director Commercial Audit &
Ex-officio Member Audit Board – I,
New Delhi**

Place: New Delhi

Date : 29 October 2007

REPLIES OF MANAGEMENT TO COMMENTS ON ACCOUNTS FOR THE FINANCIAL YEAR 2006-07 AS REFERRED IN CAG AUDIT REPORT

A. GENERAL

1. The Authority has been formed by an Act of Parliament in 1985 for development of declared Waterways by the Government.

The provisions of Companies Act are not applicable to the Authority. The disclosure of Member's responsibility statement and constitution of audit committee is not mandatory for the Authority. The views of the Authority have been communicated to Ministry for their final views on this issue.

2. (i) The Authority has deposited the full amount towards cost of the land with Govt. of Kerala for acquisition of land for construction of terminal and widening of canal. The Govt. of Kerala has not been able to hand over the land to the Authority due to Court cases. The Authority has requested Kerala Govt. to provide the required land to the Authority at the earliest. The question of payment of interest does not arise since IWAI has already deposited the entire money with the Govt. of the Kerala.
- (ii) The work was awarded to M/s. HDPE for construction of floating dry dock at a cost of Rs. 10.86 crores and two stage payments have been released to HDPE as per work certification. A Committee has been formed for indicating a way forward in this case including a re-look at specifications, cost and feasibility of operation in NW-2 etc. A decision about the amount already, paid to HDPE will be taken after final view on this Committee's report is taken.

B. BALANCE

- (i) The cost of damaged and beyond economical repairs bouys valued at Rs. 44.35 lakhs has to be assessed by the Authority after inspecting the actual position of the bouys. On the basis of the report of the local committee necessary action will be taken.
- (ii) The work for construction of approach road, boundary wall and earth filling of Jogighopa terminal was completed by Assam PWD. However the same is yet to be taken over. As such the amount was not capitalized during the F.Y 2006-07. Actual position will be reflected in current Financial Year accounts. An amount of Rs. 43.25 lakh was paid to PWD, Allahabad as advance for fabrication of 2 nos. of steel pontoon gangway., subsequently PWD Allahabad has submitted a bill No. 695/10A/Etn dated 19.05.07 for 2 no. of pontoons (i.e., 2007-08). Hence necessary entry will be passed in the financial year 2007-08.
- (iii) Payment was released to CPWD towards cost of construction of low level jetty, high level jetty and to IIT Guwahati towards consultancy charges for river training works in NW-2 on 31.3.2007 by cheque and same the was shown as advance as per commercial accounting principles and as per practice. Hence there is neither over statement of advances nor understatement of bank balance.

