

Inland Waterways Authority of India and Applied Research International Pvt. Ltd. join hands to set up a state of the art Marine Simulation Centre at NINI, Patna.

Inland Waterways Authority of India (IWAI) and M/s Applied Research International Pvt. Ltd. (ARI) have joined hands to set up a state of the art Marine Simulation Centre (MSC) at NINI. It will be the only simulator facility in the eastern region of India housing full range of simulator course & training programs namely:-

- Electronic Chart Display & Information System (ECDIS)
- Radar Observer's Course/ Automatic Radar Plotting Aid (ROC/ARPA)
- Radar Navigation Simulator Course (RANSCO)
- Ship Maneuvering Simulator Course (SMS)
- Global Maritime Distress and Safety System (GMDSS)
- Liquid Cargo Handling (LCHS)

This will be another milestone leading to develop NINI as Center of Excellence in the field of training & research in both Inland Water Transport and Merchant Shipping Sector.

Both the organizations are committed to work together with a set of defined goal, obligations and responsibilities. After signing an MOU recently for setting up of the above facilities, Inland Waterways Authority of India (IWAI) proudly announces augmentation of their existing training facility for introducing Simulator based courses and training at their National Inland Navigation Institute (NINI), Patna.

The development of simulation training centre will take place in a phased manner. In the first phase, it is scheduled to conduct courses like Bridge Team Management and Electronic Chart Display and Information System (ECDIS) which is expected to commence by end of Oct 2010.

In the second phase, the courses like Radar Observer Course (ROC), Automatic Radar Plotting Aid (ARPA), course and Ship Maneuvering Simulator (SMS) may be covered and during third phase Liquid Cargo Handling Course (Oil) for operation and management level and Global Maritime Distress and Safety System (GMDSS) course be covered with the approval of DG Shipping Govt. of India. It is scheduled to commence 2nd phase of training by February 2011 & third phase by March 2011.

These simulator based courses will be the integral part of training for both Inland Water Transport (IWT) & Merchant Marine officers/staff.

Introduction of these courses may additionally help NINI in the following manner:-

- To develop world standard human resource for IWT sector
- To provide Modern Training to SAARC countries
- To optimize utilization of NINI infrastructure

- Increase the marine related activities at NINI and spread awareness among community and public at large
- Show case state of art training facility
- Potential for revenue generation for NINI

Once fully developed the training centre will be able to provide the world class training on inland navigation and Merchant Marine within the geographical region.

About IWAI

The Inland Waterways Authority of India (IWAI) is a statutory body under the Ministry of Shipping, Govt. India constituted on 27th October 1986 under the IWAI Act of 1985 for the purpose of Shipping & navigation of the National Waterways for over all promotion and development of Inland Water Transport. The authority is thus responsible for planning, execution, development and maintenance of five numbers of National Waterways along with requisite infrastructure for safe navigation & shipping. IWAI is also the advisory body to the central Govt. on the technical and other matter related to legal & regulatory issues on IWT sector. The head office of IWAI is at Noida, U.P. India. Find out more at www.iwai.nic.in.

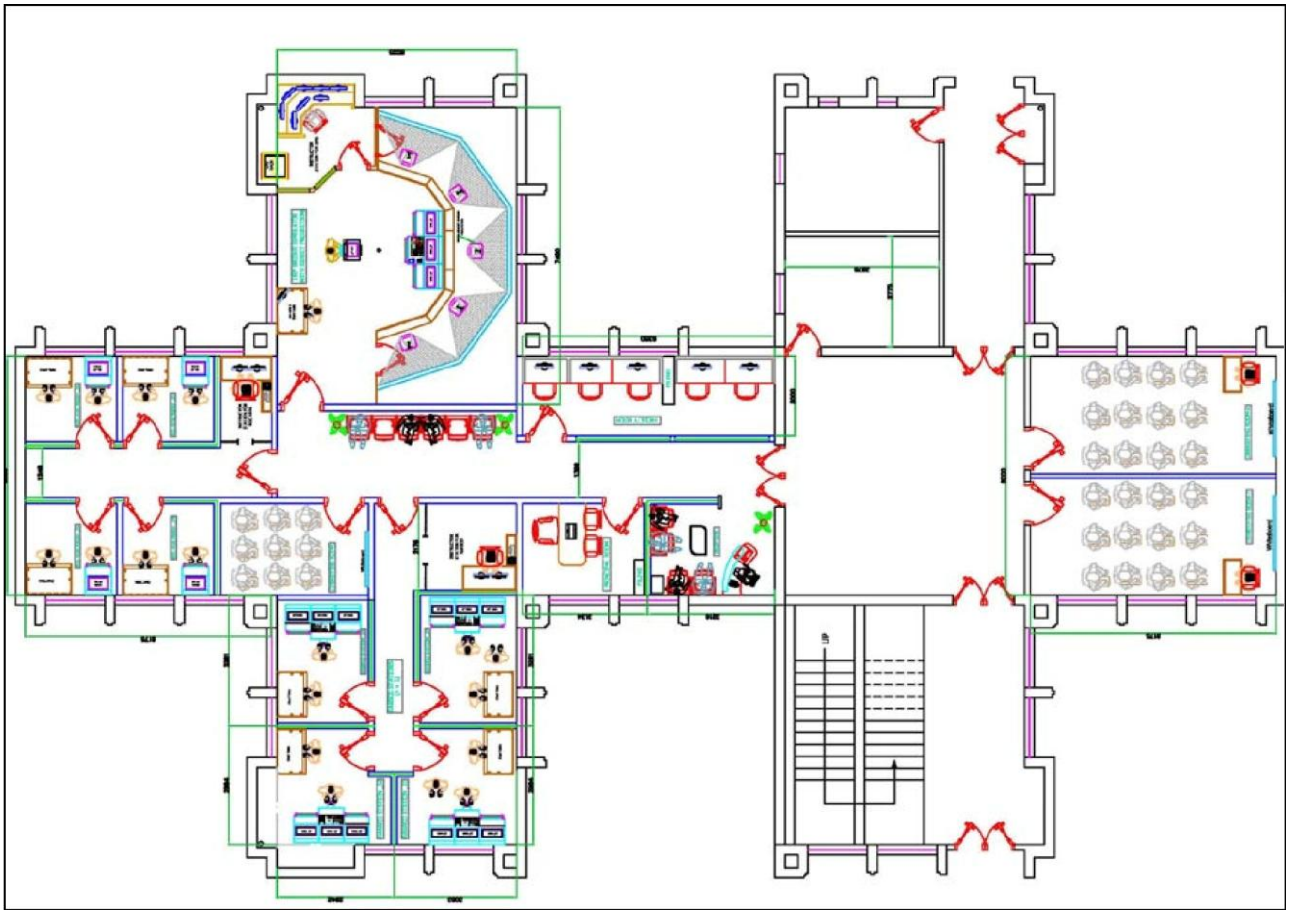
About ARI

ARI is a pioneer and leading global supplier of simulation and IT solutions.

Headquartered in New Delhi, India, ARI is an ISO 9001:2000 certified organization with more than 200 simulation installations across the globe. ARI brings to the table more than 15 years of experience in simulation equipment design, dynamic modeling, real time graphics, network and distributed simulation and domain expertise and utilizes these in creating world class unique simulation training solutions for its clients.

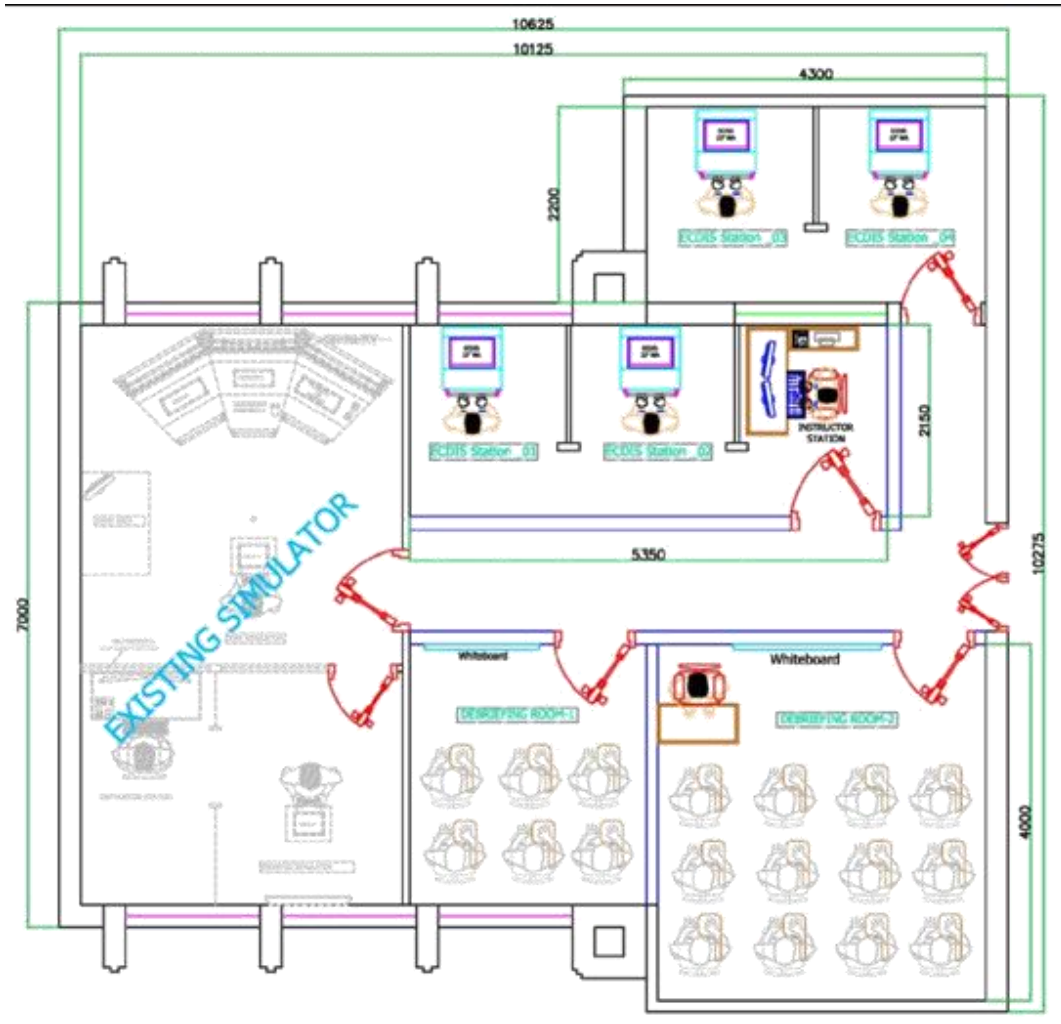
Based on the STCW'95 convention simulation training requirements, ARI simulators have been certified by DNV to the highest Class 'A' standard. ARI simulator solutions range from PC based personal trainers, part task trainers to full mission solutions in: Ship Handling, Offshore, Marine Communications, Liquid Cargo Handling, Propulsion and Power Management, Advanced Crane Handling (in both ship and shore environment), Drilling, Road Transport as well as custom simulation solutions built to order.

Find out more at www.arisimulation.com



Ground Floor 1





Ground Floor 2



