

Workshop on movement of cargo through National Waterway No.3

Presentation
on

National Waterway No.3 (West Coast Canal)

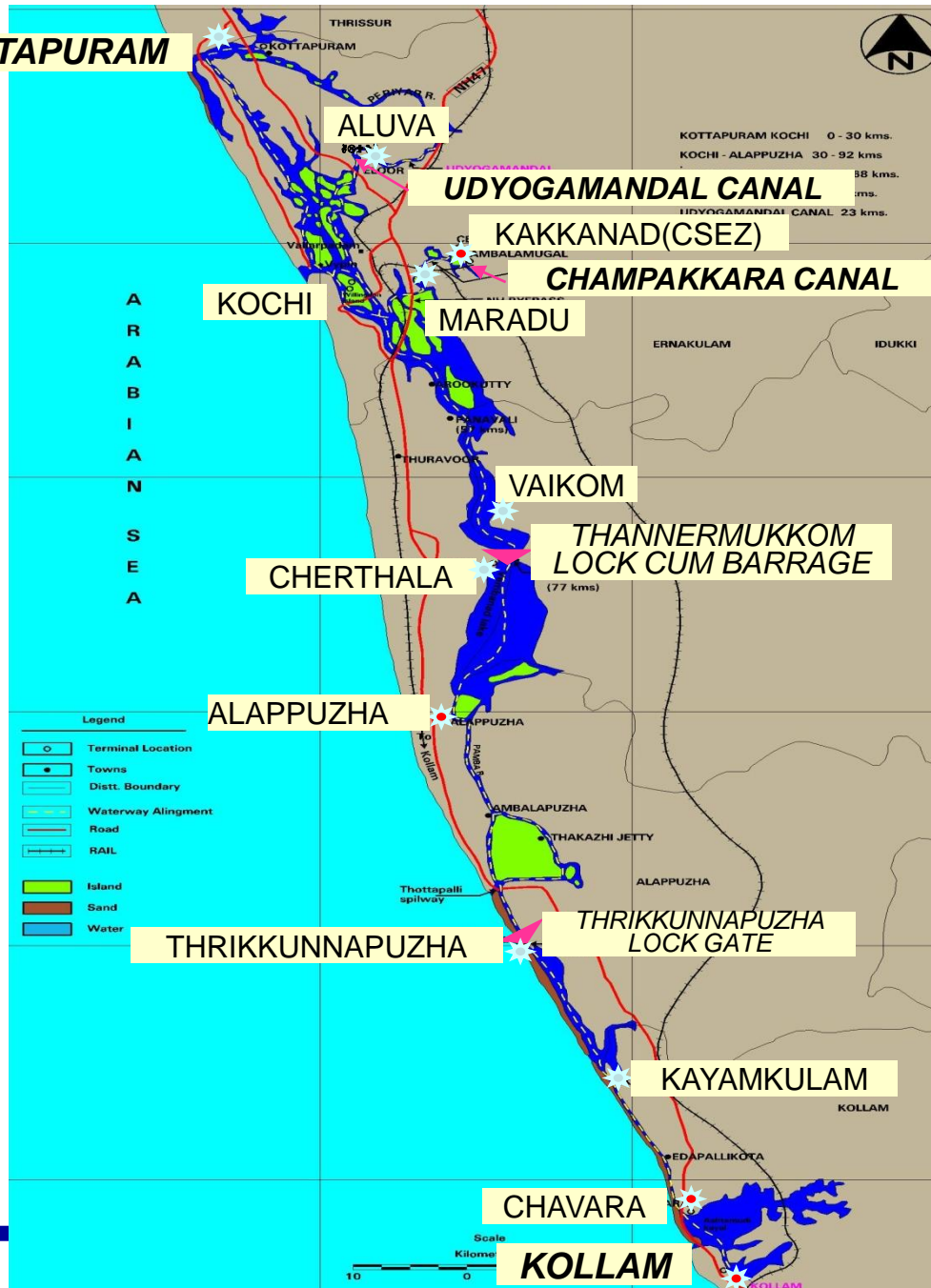
*15 February 2010
Kochi*



Structure of Presentation

- **National Waterway No. 3 – *features***
- **Progress made so far**
- **Cargo movement**
- **Issues**
- **Possibilities**

KOTTAPURAM



West Coast Canal (Kottapuram – Kollam) Champakkara & Udyogamandal canals National Waterway-3

River distance	
Kottapuram - Kochi	30 km
Kochi - Alappuzha	62 km
Alappuzha - Kollam	76 km
Champakkara canal	23 km
Udyogamandal canal	14 km
Total length	205 km

Legend	
Declared waterway	
Terminal (Existing)	
Terminal (Proposed)	

National Waterway No.3

....features

Date of declaration : 1st February, 1993

Stretches

West coast canal
(Kottapuram - Kollam) : 168 km

Udyogmandal canal
(Kochi - Pathalam bridge) : 23 km

Champakara canal
(Kochi - Ambalamugal) : 14 km

Total : **205 km**



National Waterway No.3

....features

- **Sea openings** : **Munambam, Kochi, Kayamkulam, Neendkara**
- **Tidal influence** : **0.70 m to 1.00 m**
- **Lock gates** : **2 (Thanneermukkom, Thrikunnapuzha)**
- **Narrow portions** : **Alappuzha – Kollam stretch**
- **No of bridges** : **38**

National Waterway No.3

....features

- **Minimum clearance : Horizontal 9.0 m**
: Vertical – 4.2 m above HFL
(at Kanniyanpuzha rail bridge in Champakkara canal)
- **Fairway Development : Width (Lake area) : 38m**
Width (canal area) : 32m
Depth : 2m
- **Terminals : Planned 11 no. (7 completed)**

National Waterway No.3

....features

- **Total estimated cost** :Rs. 206 Cr at current price
- **Expenditure so far** :Rs. 129.16 Cr (up to Jan 10)
- **Current cargo (2008-09)** :0.76M-tonne (1.09M-tonne-Km)
- **Projected Cargo by 2020** :7.17 M tonne (558.37 M ton-km)

National Waterway No.3

....features

Vessel Specifications

- Self propelled vessel (suggested)
 - ❖ Carrying capacity : 350 tonne
 - ❖ Size : 50mx8.5mx1.5m
- Speed : 10 km/hour

Progress made so far

.....*fairway*

Dredging

- Capital dredging not required - 118 km
- Capital dredging completed - 63 km
- Capital dredging underway - 24 km

Progress made so far

.....fairway

Bank protection

Stretch	Work completed	Under execution
Champakara Canal	3.60 Km	1.36 Km
Udyogmandal Canal	3.83 Km	0.86 Km
Kochi- Kollam	0.70 Km	14.50 Km
Total	8.13 Km	16.72 Km

Progress made so far

....terminals

- **Seven terminals already constructed**
 - Kottapuram, Aluva, Maradu, Vaikkom, Thanneermukkom, Thrikunapuzha, and Kayamkulam
- **Terminal at Kollam under construction – *likely completion April 2010***
- **Two terminals – one each at Bolgatty and Willingdon islands with RO-RO/LO-LO (roll on- roll off/ lift on- Lift off) facilities under construction to provide NW3 connectivity to ICTT Vallarpadam**

Progress made so far

....navigational aids

- **312 Navigational aids comprising of navigation buoys and solar operated navigation lights and 18 beacon towers installed covering the entire stretch of NW-3**
- **This is the first National Waterway in the country having 24 hours navigation facilities on the entire stretch.**

Cargo Movement

	(in million ton)	(in million ton-km)
2005-06	1.17	1.69
2006-07	1.02	1.49
2007-08	0.67	0.89
2008-09	0.76	1.09

Cargo Movement

Reasons for less movement

- Cargo movement presently limited to Champakkara and Udyogmandal canals
- Liquid ammonia cargo (*Eloor to Ambalamugal*) shifted to road
- Reduction in furnace oil and drinking water movement
- Decline in cargo on Udyogmandal canal

Issues

.....in the context of making NW3 functional

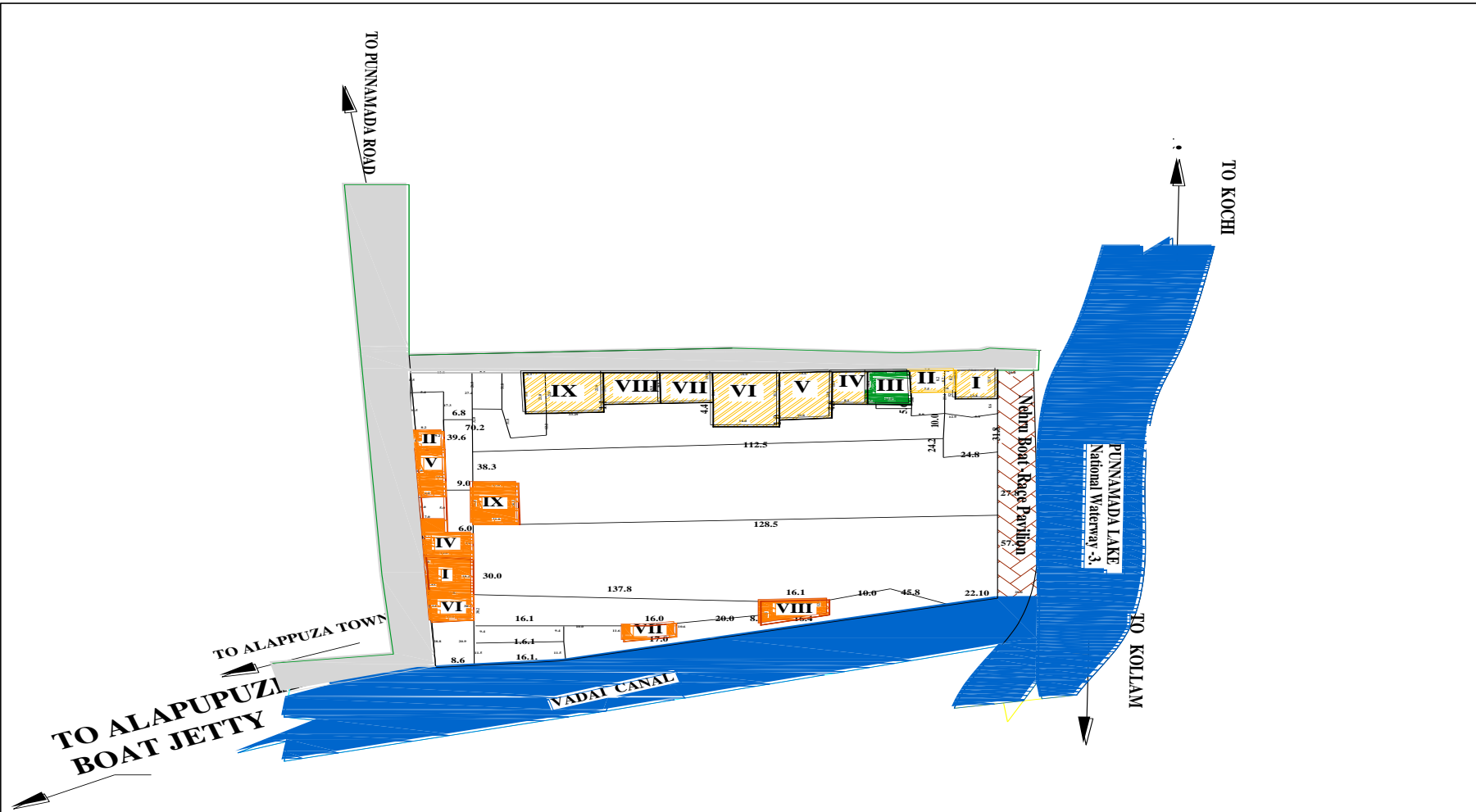
- **Capital dredging**
 - ❖ Removal of fishing nets/stakes from fairway
 - ❖ Non-availability of sites for dumping of dredged material
- **Delay in completion of bank protection work (3500 m) near KMML/IRE by the Irrigation Dept. Govt. of Kerala (*work awarded on 02.01.2007 on deposit basis*)**
- **Land Acquisition for Alappuzha terminal**

Possibilities

- **Decongestion**
- **Integration of IWT with EXIM trade**
 - ❖ **Container movement from hinterland to Sea port**
 - ❖ **Container freight station at IWT terminals**
- **Spurt in River Tourism**

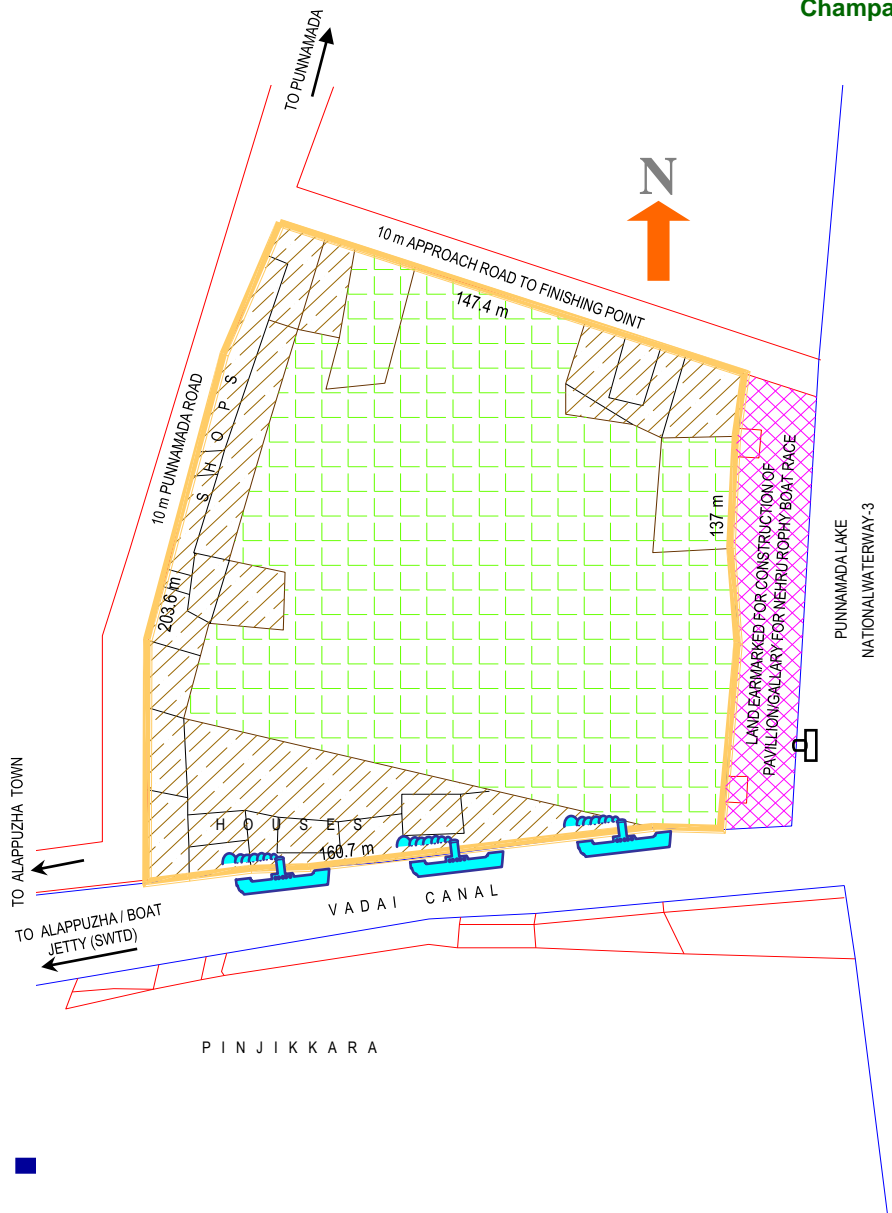
Thank you

Land acq. issue at Alappuzha



Proposed IWT terminal site at Mullackal village(Alappuzha)

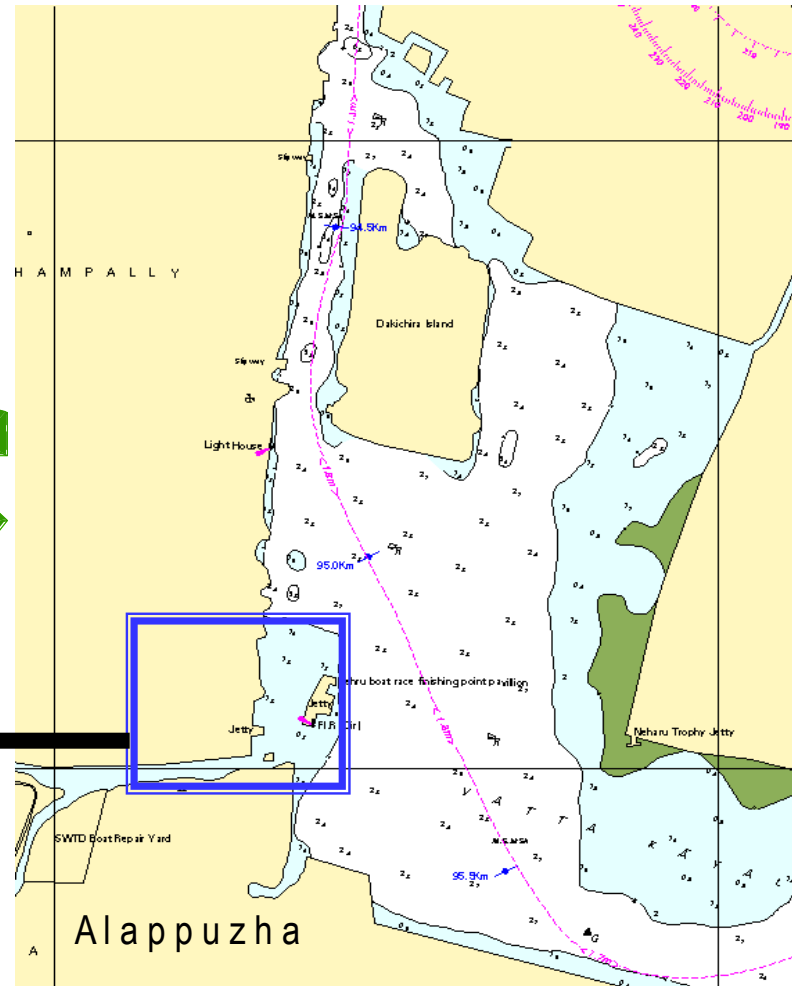
West Coast Canal
(Kottapuram – Kollam)
Champakkara & Udyogamandal canals
National Waterway-3



TOWARDS KOCHI

TOWARDS KOLLAM

VATTA KAYAL



Legend

- Proposed IWT land boundary
- Partial land being offered to IWAI by GOK without water frontage
- Balance land to be acquired by GOK and to be handed over to IWAI
- Land earmarked for Nehru trophy boat race society