

Minutes of Pre-bid meeting held on 21.04.2015 at 15:00 Hrs for the tender for design, construction, supply and installation of a steel Pontoon with gangway at Terminal location at Erada on NW-5, Odisha.

1. The pre-bid meeting was attended by the following:

a) IWAI :

- i) Sh. R.P.Khare, Member(Tech)
- ii) Sh. S.Dandapat, Chief Engineer(P&M)
- iii) Sh. P.Srinivasa, AHS
- iv) Sh. A.R.Ghatak, Consultant

b) Bidders :

- i) Sh. Sudip Roy, M/s AC Roy & Co., Kolkata
- ii) Sh. Santhosh, M.K., M/s Master Shipyard Pvt. Ltd, Kochi
- iii) Sh. Ashok Khandelwal, M/s B.B.Paul & Co, Kolkata.

2. The meeting commenced with the brief introduction on the tender. The queries raised by the bidders participated in the meeting and as received through e-mail from M/s Starteck Shipyards Pvt. Ltd & M/s Precision Engineers & Fabricators(P) Ltd. were discussed and the clarification of IWAI on the same are given below :-

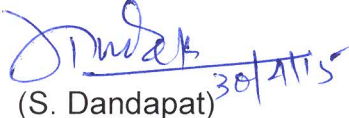
Sl. No.	Refer Clause/ Page No.	Query	Clarification
1	Deck Crane	The bidder enquired about the technical details of the deck crane to be supplied by IWAI for design and preparation of the construction drawings of the foundation, trim & stability calculation of the pontoon in various operational condition of cranes for successful installation.	It is clarified that the responsibilities of the supply & installation of the deck crane of maximum 5 tonne capacity for handling the bulk cargo shall be with IWAI. Hence, once, the supplier of the deck crane is finalized, the detail of the cranes, foundation details etc shall be provided to the successful bidder. However, typical foundation details for reference are enclosed.
2	Gangway	The bidders enquired about the technical details of the gangway, its dimensions & material for construction.	It is clarified that since the cargo handling from the vessels/barges berthed on the pontoon shall be carried out by cranes, there is no need for installation of usual gangway for manual cargo handling. However, one walking way of approx. 5m length with 1 mt. width shall be fabricated of steel structure for the passage of the crew/operators having railing, suitable fastening/hinging &

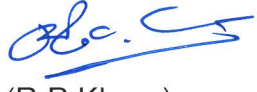
[Handwritten Signature]
30/4/15


			shifting arrangement. The design & drawing in this regard shall be finalized in consultation with the designer of the bidder depending on the design of the jetty & final placement of the pontoon.
3	Fenders	The bidders suggested that in place of neoprene fenders on stern & stern(transom), the half round steel fender all around the pontoon shall be provided with heavy duty portable truck tyres.	The half round steel fender all around the pontoon in place of neoprene fenders shall be provided along with heavy duty portable truck tyres at every 4m distance on both sides of the pontoon
4	Genset	The bidders enquired about the requirement of genset for operating the anchor winch.	The operation of winch for lifting the anchors is to be both manual and electrically operated. The power requirement for operating the winch shall be taken from shore/vessels. Hence, no need to supply the genset.
5	29.1 (Page 22)	One of the bidders requested to clarify regarding the own contract support facilities.	It is clarified that the bidder should have the required facilities such as the yard, machineries and equipment, manpower, design facilities etc. for executing the work successfully either by its own or on lease/hire basis with proper documentary support.
6.	2.2.3	The bidders enquired about the requirement of shell plating thickness 7mm or as per class requirement.	It is clarified that shell plating thickness shall be as per the class requirement.
7	2.2.4	Bidders requested to define the deck load for designing deck and beams.	The deck load as already defined for 5 tons per sq.m shall be considered for strengthening the main deck including the beams.
8	2.3.1	Bidders enquired about the requirement of 12mm thickness of manhole cover or as per the class requirement.	It is clarified that the thickness of manhole cover shall be as per class requirement.
9	12(e)(Page 82)	Bidders enquired about the requirement of the Dead weight not to exceed 30T	Dead weight requirement will not be applicable.
10		One of the bidders requested that the necessary road permit for shifting the pontoon in partially/fully completion stage from the bidders yard to delivery site shall be arranged by IWAI.	IWAI shall arrange & handover the necessary documents required for obtaining the road permit. The bidder shall obtain the road permit from the concerned authorities of the State Govt/Local authorities..
11		One of the bidders enquired that whether one or two cranes shall be installed and accordingly the requirement of calculating the trim and stability and fixing the dimension.	It is clarified that two cranes of maximum 5 ton capacity for loading/unloading having a variable boom length of 10 to 15m shall be installed on the centre line of the pontoon as the draft GA plan attached. The principal dimension as

Dimple
30/11/15

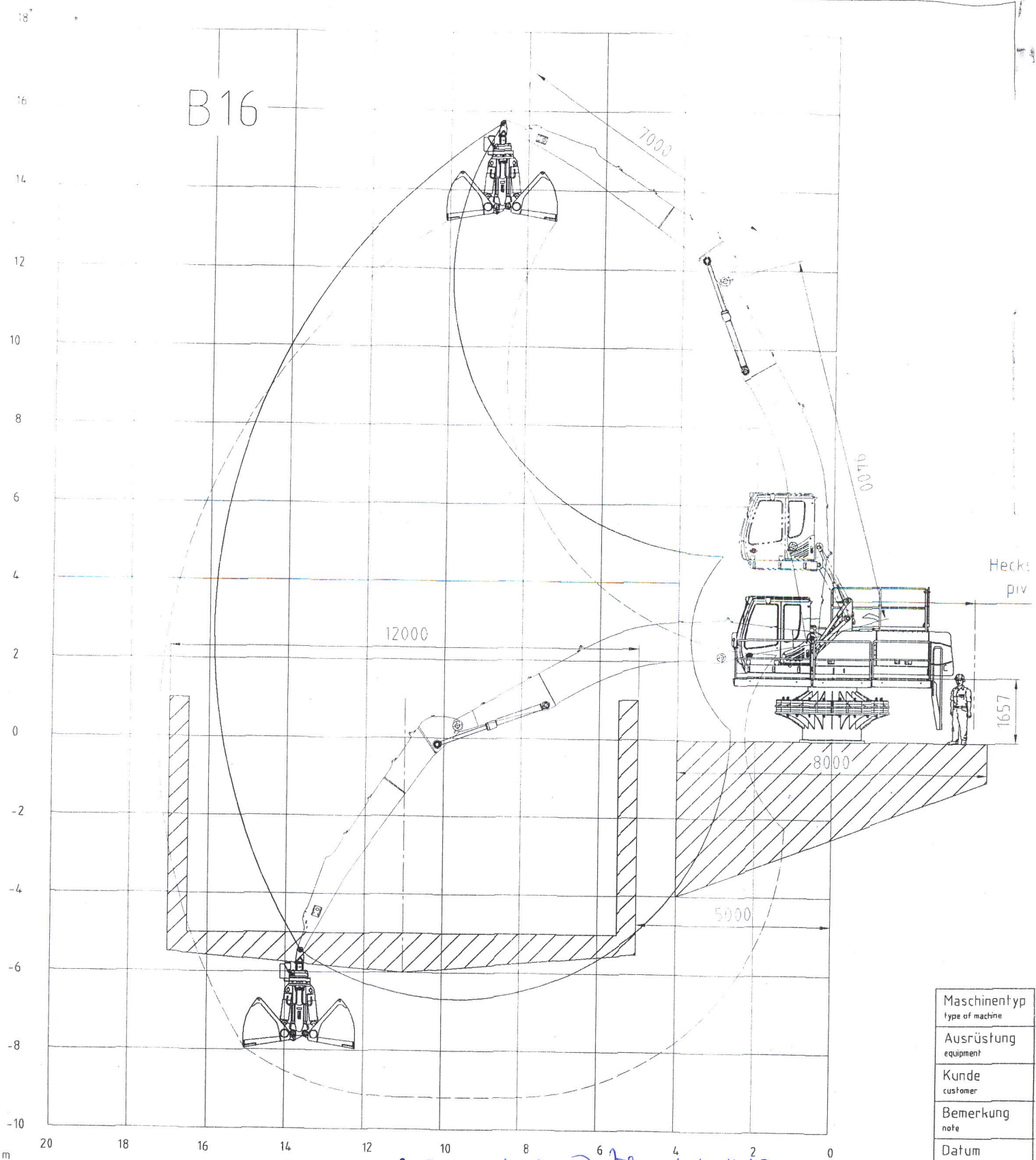
			mentioned may have variation of +/- 5% depending on trim and stability requirement. The trim and stability booklet of the pontoon in various operating condition of the cranes shall be prepared and got approved from the registering authority as per the provision of IV Act of 1917.
12.		One of the bidders enquired about the mode of transport of Pontoon either by waterway or road.	It is suggested to the bidders to visit the site to assess the feasibility of transporting by waterway or road and also construction of pontoon at the terminal site.
13	Clause. 8.0 (Page .6)	One of the bidders requested that date of submission of bids may please be extended for one week	The last date of submission of the bids now shall be upto 17 hrs. on 14 th May 2015 and the bids be opened on 15 th May' 2015 at 11:30 hrs.


(S. Dandapat)
Chief Engineer (P&M)


(R.P. Khare)
Member (Technical)

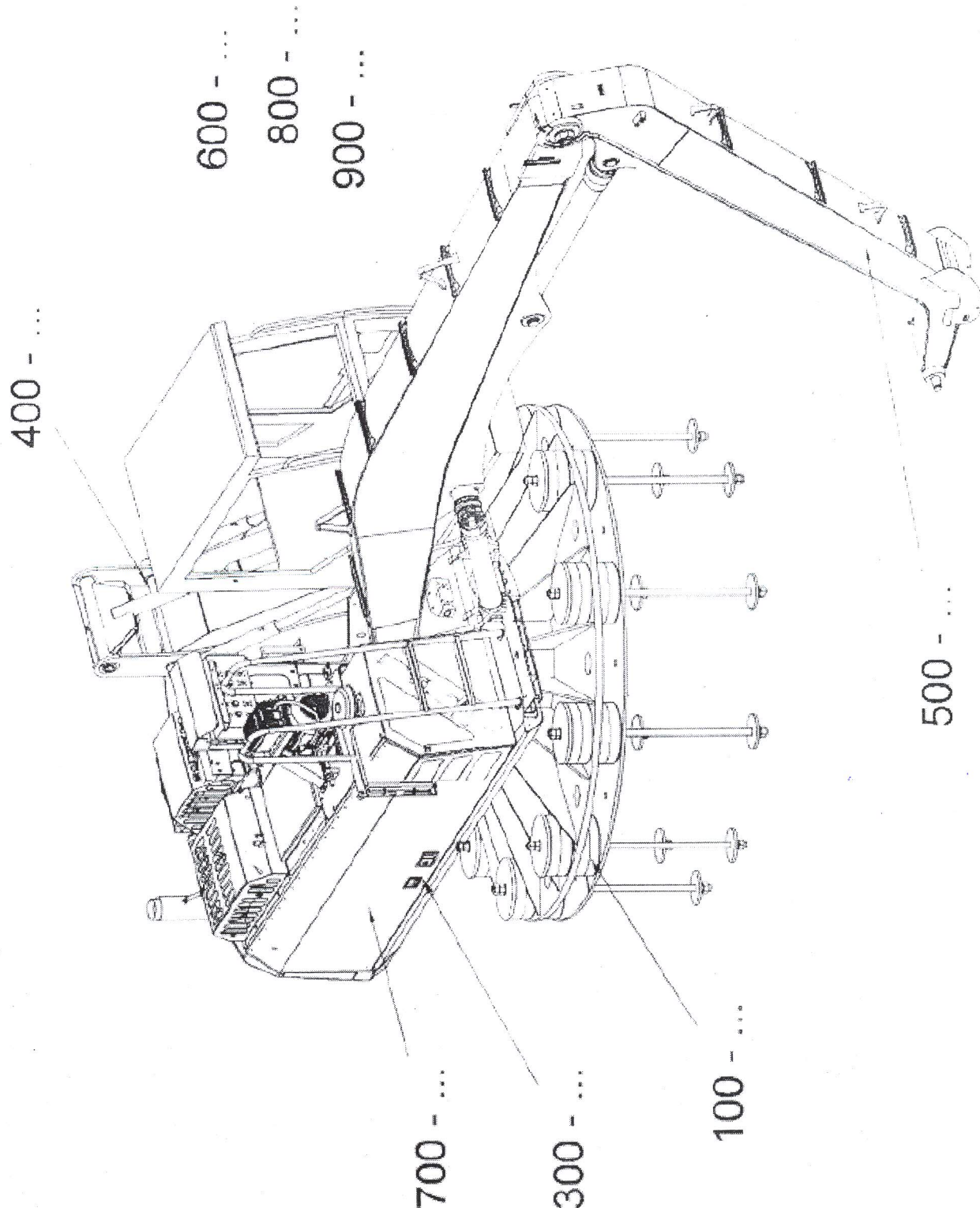

(Pravir Pandey)
Member (Finance)

B16



Typical crane proposed for installation.

Maschinentyp type of machine
Ausrüstung equipment
Kunde customer
Bemerkung note
Datum date
Ersteller designer



Typical (case of max weight of line case - 60T.)

Typical
Lay out of the ~~can~~ ~~panels~~ with bands of ~~barge~~

