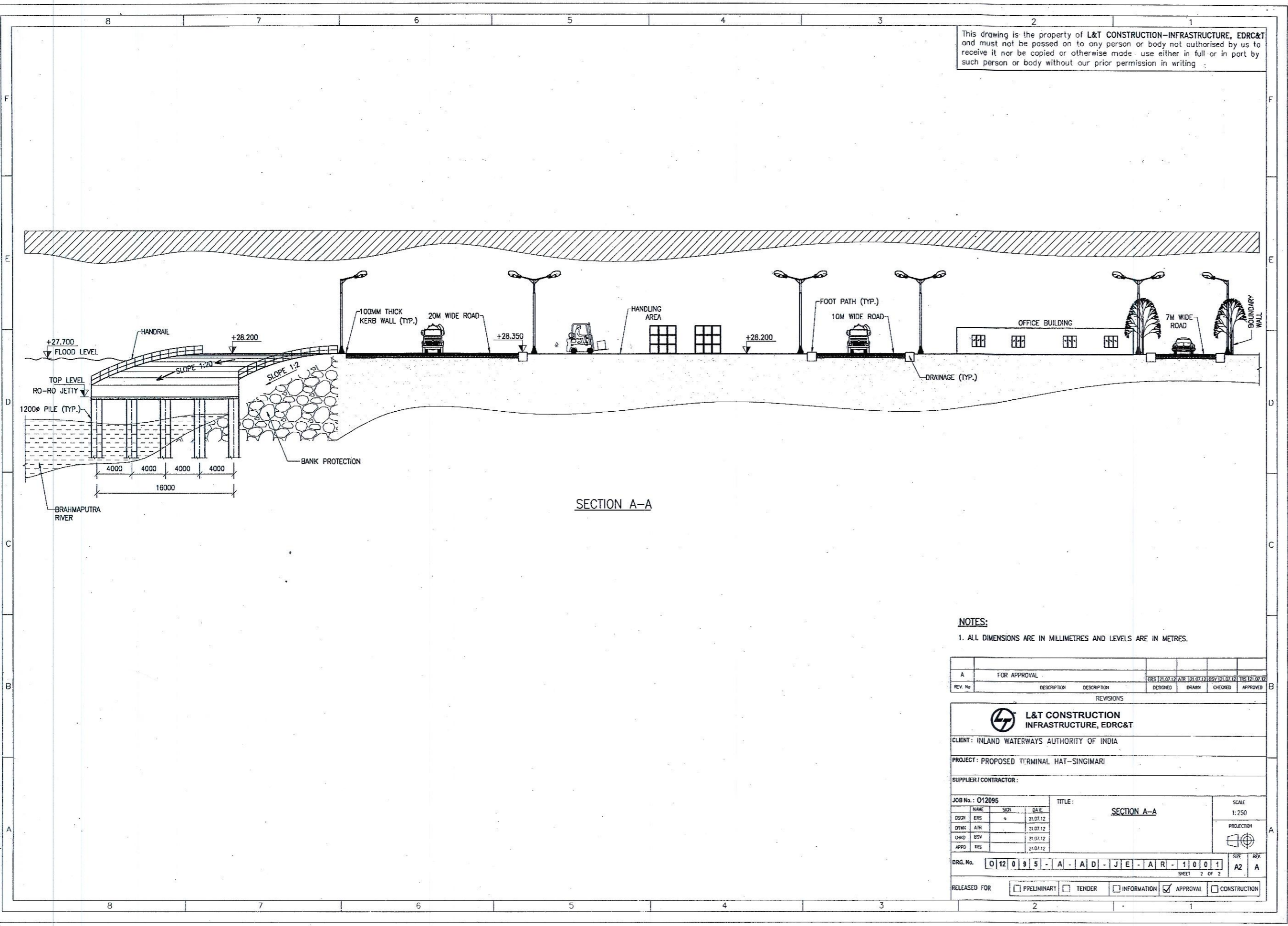


This drawing is the property of L&T CONSTRUCTION-INFRASTRUCTURE, EDRC&T and must not be passed on to any person or body not authorised by us to receive it nor be copied or otherwise made use either in full or in part by such person or body without our prior permission in writing.



SECTION A-A

**NOTES:**  
1. ALL DIMENSIONS ARE IN MILLIMETRES AND LEVELS ARE IN METRES.

A		FOR APPROVAL		EVS 12.07.12		AIR 21.07.12		SSV 21.07.12		HS 21.07.12	
REV. No.	DESCRIPTION	DESIGNED	DRAWN	CHECKED	APPROVED						

**L&T CONSTRUCTION INFRASTRUCTURE, EDRC&T**  
CLIENT: INLAND WATERWAYS AUTHORITY OF INDIA  
PROJECT: PROPOSED TERMINAL HAT-SINGIMARI  
SUPPLIER/CONTRACTOR:

JOB No.: 012085			TITLE: SECTION A-A			SCALE: 1:250	
DESIGN	DATE		PROJECTION				
CHKD	DATE						
APPD	DATE						

DRG. No. 012085-A-AD-JE-AR-1001  
SHEET 2 OF 2

RELEASED FOR  PRELIMINARY  TENDER  INFORMATION  APPROVAL  CONSTRUCTION