

River Cruise Tourism

Inland Waterway Authority of India

10th February 2025

Agenda

1

IWAI: Overview

2

**River Cruise Operation on
NWs**

3

**Status of River Cruises in
India**

4

**Recent development/
Initiatives and routes
identified for River Cruises**

5

Way Forward

IWAI: Overview



As per section 14 of IWAI Act, 1985, IWAI is mandated with the development and regulation of waterways which are declared as National Waterways in India

1986

Establishment of Inland Waterways Authority of India & Declaration of NW-1 (Ganga-Bhagirathi-Hooghly river system)

1988

Declaration of Brahmaputra river as NW-2

1993

Declaration of West Coast Canal (Kottapuram- Kollam), Champakkara & Udyogamandal canals as NW-3.

2008

Declaration of NW-4 (River Krishna, Godavari and Buckingham Canal system) and NW-5 (East Coast Canal and Mahanadi Delta Rivers)

2016

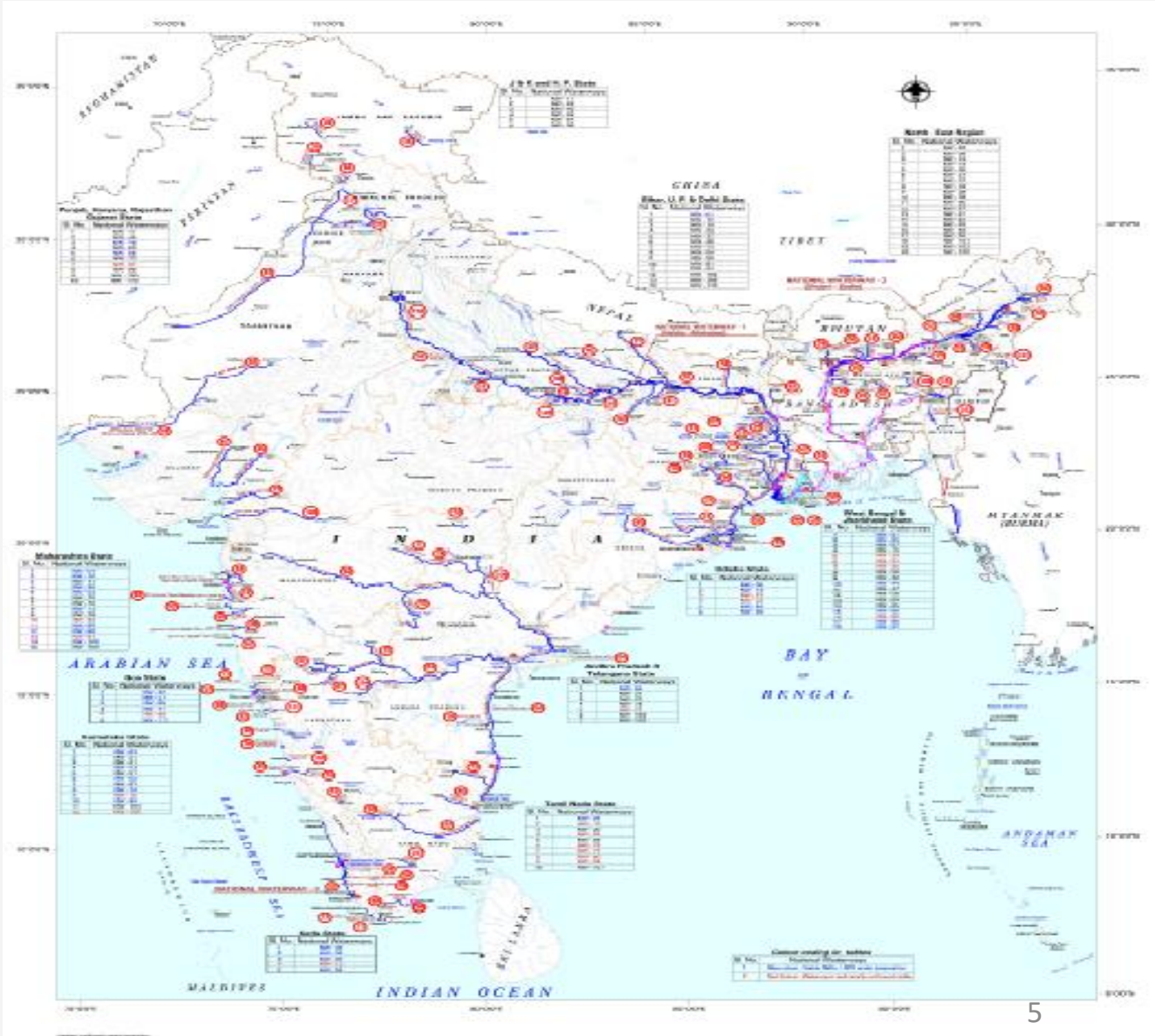
Declaration of 106 new National Waterways under The National Waterways Act, 2016

Total No. of NWs - 111

Details of National Waterways

Total No. of National Waterways	111
Total Length of National Waterways	20,187 km
No. of Operational National Waterways	<u>26</u>
Length of operational National Waterways	4894 km

- ❖ 111 NWs spread across 23 States and 4 UTs.
- ❖ No NWs in 5 States and 4 UTs.



Inland Waterways Authority of India (IWAI) – Key Functions



Infrastructure Development

- Maintenance & Development of fairways;
- Terminals & allied infrastructure;
- Navigational Aids



Technical studies

- Feasibility & Navigational/ Cargo movement Studies
- Detailed Project Report (DPR) for potential projects



Advise & Assistance

- Assistance to States/Central govt. in IWT sector development
- Nodal agency for Inland Waterway Development Council



Promotion of IWT

- Advocacy, public outreach and communications
- Stakeholder's engagements
- Livelihood support/
Community jetties



Training & Development

Training centers by IWAI at:

- National Inland Navigation Institute (NINI) at Patna
- Maritime Skill Development Centre at Guwahati

IBP Route

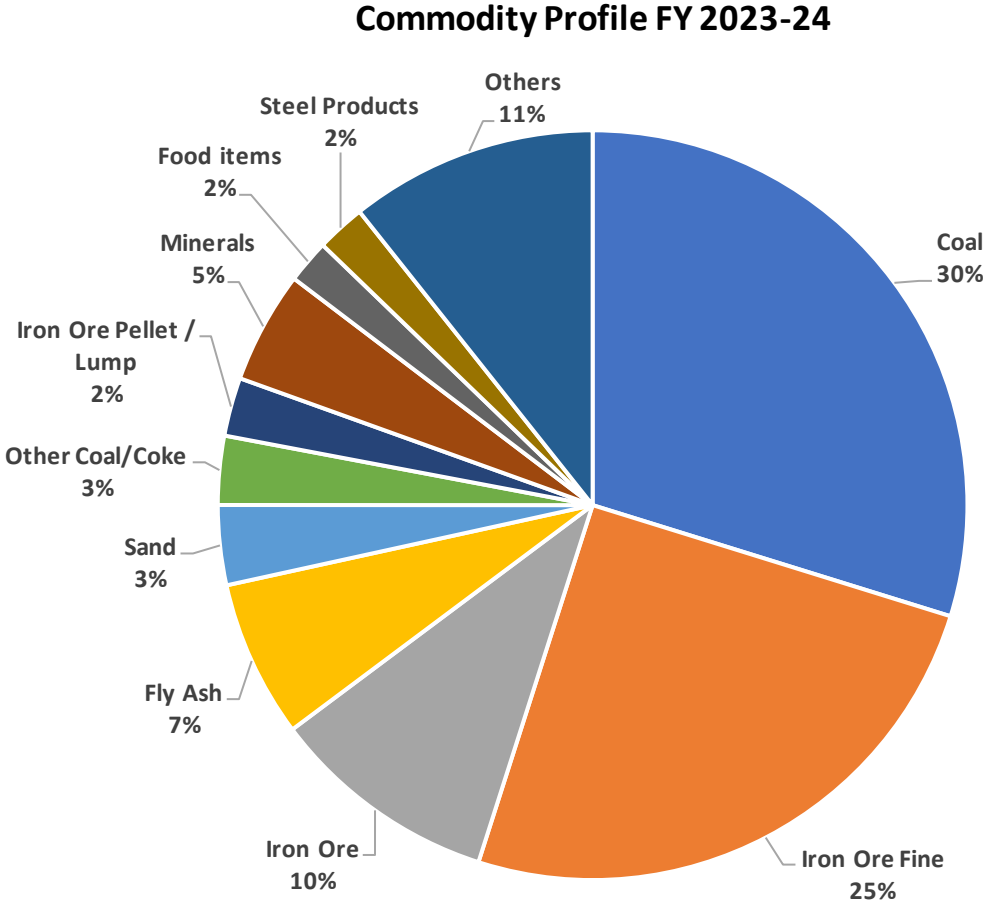
- Facilitation of Cargo/Passenger movement on IBP route

Cargo Movement on IWT

~133.03 MMT Cargo Volume during FY 2023-24

~2% Current Modal share of Inland Water Transport (IWT) . 5% Target for Vision 2030 and 7% Target for 2047

142 MMT Target for FY 2024-25



Tourist Movement through River Cruise on IWT

National Waterway	2018-19	2019-20	2020-21	2021-22	2022-23	2023-24	2024-25 (Dec)
NW-1 (11 vessels)							
Total trip performed/ No. of Tourists	48/1588	94/2177	03/109	02/64	96/8632	218/9481	46/1956
PIWT&T Routes (04 vessels)							
Total trips performed/ No. of Tourists	03/ 45	04/73	01 /56	01/36	3/46	21/656	2/30
NW-2 (8 vessels)							
Total trip performed/ No. of Tourists	44/645	51/688	-	04/49	72/700	116/1103	41/525
NW-3 (1 vessel)							
Total trip performed/ No. of Tourists	1/6	16/148	1/2	-	14/228	16/191	8/73
TOTAL	96/2284	165/3086	5/167	7/149	185/9606	371/11,431	32/774

River Cruise Operation on NWs



RIVER CRUISE OPERATIONS ON NWS (OPERATIONAL STRETCHES)

NW-1 (Ganga River)	<ul style="list-style-type: none">• Kolkata-Varanasi stretch (UP, Bihar, Jharkhand & West Bengal)
NW-2 (Brahmaputra River)	<ul style="list-style-type: none">• Dhubri–Dibrugarh stretch (Assam)
NW-3 (West Coast Canal)	<ul style="list-style-type: none">• Kottappuram–Kollam stretch (Kerala)
NW-27 & NW-68 (Cumberjua & Mandovi Rivers)	<ul style="list-style-type: none">• Tourism Jetty Patto – Chorao Island – Old Goa – Divar Island – Tolto Ferry Ghat – Cortalim (Goa)
NW-97 (Sunderbans Waterways)	<ul style="list-style-type: none">• Namkhana - Bhagabatpur - Sajnekhali – Hemnagar (West Bengal)
Indo- Bangladesh Protocol Route	<ul style="list-style-type: none">• Kolkata-Bali Island
NW-5 (Matai River & East Coast Canal)	<ul style="list-style-type: none">• Bhitirkanika-Hukitola-Paradip (Odisha and West Bengal)
NW-8 (Alappuzha-Changanassery Canal)	<ul style="list-style-type: none">• Alapuzha and Changanassery (Kerala)

River Cruise Operations on NWs (Operational Stretches)

NW-9 (Alappuzha- Kottayam- Athirampuzha Canal)	<ul style="list-style-type: none">• Alapuzha and Kottayam (Kodimatha – Pallom) (Kerala)
NW-1 (Ganga River)	<ul style="list-style-type: none">• Engineering College - Digha Bridge, Patna (Bihar)
NW-14 (Baitarni River)	<ul style="list-style-type: none">• Aradi - Nalitpatia – Kholā (Odisha)
NW-47 (Jalangi River)	<ul style="list-style-type: none">• Mayapur - Kadamtala Ghat (West Bengal)
NW-73 (Narmada River)	<ul style="list-style-type: none">• Statue of Unity (Maharashtra & Gujarat)
NW-87 (Sabarmati River)	<ul style="list-style-type: none">• Gandhi Bridge – Nehru Bridge, Ahmedabad (Gujarat)
Outside NW	<ul style="list-style-type: none">• Barkul - Kalijai - Nalaban - Nairi – Satapada on Chilika Lake

**STATUS OF
RIVER CRUISE CIRCUITS
IN VARIOUS
NATIONAL WATERWAYS**

SUMMARY OF RIVER CRUISE CIRCUITS IDENTIFIED IN VARIOUS NATIONAL WATERWAYS

❖ Total No. of Cruise Circuits	:	38
○ Luxury	:	<u>07</u>
○ Budget	:	<u>13</u>
○ Local	:	<u>18</u>

❖ OPERATIONAL	:	<u>15</u>
❖ DEVELOPMENT IN PROGRESS	:	<u>13</u>
❖ ACTION TO BE TAKEN UP FOR DEVELOPMENT	:	<u>08</u>
❖ TO BE RE-ASSESSED	:	<u>02</u>

STATE WISE LIST OF RIVER CRUISE CIRCUITS

State	National Waterway	Operational Route	Development in progress	Action to be taken
Andhra Pradesh (2 circuits)	NW-4		Srisaïlam – Akkamahadevi Caves	
	NW-4		Polavaram-Pochavaram	
	NW-4		Nagarjuna Sagar Dam	
Assam (2 circuits)	NW-2	Dhubri - Dibrugarh		
	NW-16			Lakhipur - Badarpur - Karimganj
Bihar (2 circuits)	NW-1	Kolkata - Varanasi (passing through Bihar)		
		Engineering College- Digha Bridge)		
Delhi (1 circuit)	NW-110			Sonia Vihar-Jagatpur
Goa (4 circuits)	NW-25			Morjim - Colvale Dhargal Bridge
	NW-71			Britona Jetty - Aldona Jetty
	NW-111			Cortalim – Rassaim – Raia – Sanvordem
	NW-27 and NW-68	Tourist Jetty Patto- Chorao Island- Old Goa- Divar Island- Tolto Ferry Ghat- Cortalim		
Gujarat (3 circuits)	NW-73	Statue of Unity	Upstream SSD - Barwani	
	NW-87	Gandhi Bridge, Ahmedabad - Nehru Bridge, Ahmedabad		
	NW-100		Dumas - Old Surat Castle	

STATE WISE LIST OF RIVER CRUISE CIRCUITS

State	National Waterway	Operational Route	Development in progress	Action to be taken
Himachal Pradesh (1 circuit)	NW-84			Near Atal Setu - Ranjit Sagar Dam
Jammu and Kashmir (2 circuits)	NW-49		Zero bridge – Chattabal	
	NW-84			Near Atal Setu - Ranjit Sagar Dam
Jharkhand(1 circuit)	NW-1	Kolkata - Varanasi (passing through Jharkhand)		
Karnataka (4 circuits)	NW-43 and NW-74			Ashok Nagar - Thumbe Village
	NW 51		Beechanahalli - Beeramballi	
	NW 52		Karwar Port - Virje near Kadra Dam	
	NW-90		Honnavar Port - Gersoppa	
Kerala (3 circuits)	NW-3	Kottappuram - Kollam		
	NW-8	Alappuzha - Changanessary		
	NW-9	Alappuzha - Kodimatha		

STATE WISE LIST OF RIVER CRUISE CIRCUITS

State	National Waterway	Operational Route	Development in progress	Action to be taken
Maharashtra (3 circuits)	NW-53		Gaimukh - Panju Island	
	NW-83		Murud - Janjira - Padmagurg	
	NW-89			Harihareshwar
Odisha (3 circuits)	NW-5	Bhitarkarnika - Hukitola - Paradeep		
	NW-14	Aradi - Nalitpatia - Khola		
	Outside NW	Chilka Lake		
Punjab (1 circuit)	NW-84			Near Atal Setu - Ranjit Sagar Dam
Rajasthan (1 circuit)	Outside NW			Kota Barrage- Jawahar Sagar Dam
Uttar Pradesh (4 circuits)	NW-1	Kolkata-Varanasi		
	NW-40	-	Naya Ghat - Guptar Ghat	
	NW-42	-		Pucca Bridge - Gomti Barrage
	NW-110	-	Vishram Ghat, Mathura - Keshi Ghat, Mathura	

STATE WISE LIST OF RIVER CRUISE CIRCUITS

State	National Waterway	Operational Route	Development in progress	Action to be taken
West Bengal (4 circuits)	NW-1	Kolkata - Varanasi	-	
	NW-47	Mayapur - Kadamtala Ghat	-	
	NW-60	-		Mukutmanipur- Banpukuria
	NW-97	Namkhana-Bhagabatpur-Sajnekhali-Hemnagar		
	IBP	Kolkata – Bali Island		
International (1 circuit)	IBP	Kolkata-Dhaka		

**STATUS / ACTION TAKEN BY IWAI
FOR RIVER CRUISE CIRCUITS**

OPERATIONAL RIVER CRUISE CIRCUITS

15 CIRCUITS

- ❖ **Cruise Circuit:** KOLKATA - VARANASI ON NW-1 (Ganga-Bhagirathi-Hooghly River System) - **OPERATIONAL**
- ❖ **Category:** Luxury River Cruise
- ❖ **States Covered:** West Bengal, Jharkhand, Bihar, UP

CRUISE WITH NIGHT STAY		DAY CRUISING
Operational Circuits	Proposed Circuits	Operational Circuits
i. Kolkata-Patna (815 Km)	Varanasi – Chunar (28 Km)	Varanasi
ii. Kolkata-Varanasi (1168 Km)	Varanasi – Ghazipur (134 Km)	Patna
iii. Kolkata-Murshidabad (301 Km)		Kolkata
iv. Kolkata-Sundarbans (306 Km)		

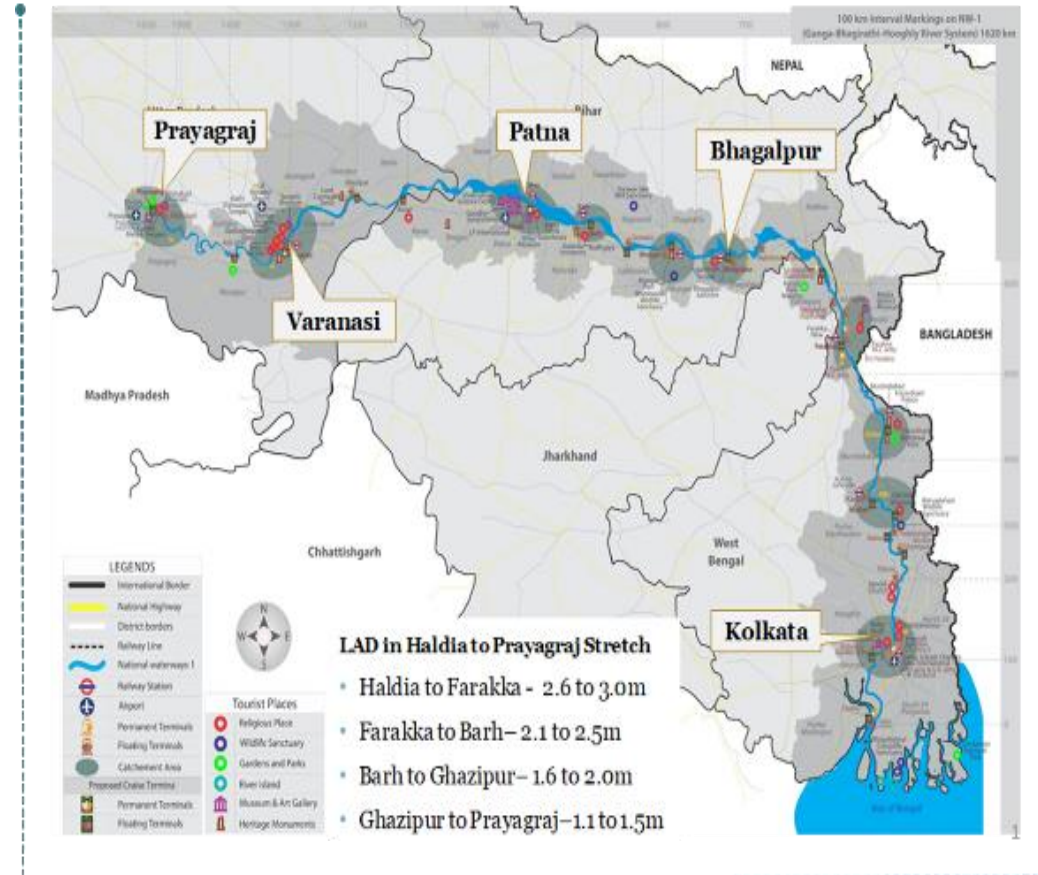
❖ **List of Cruise operators:**

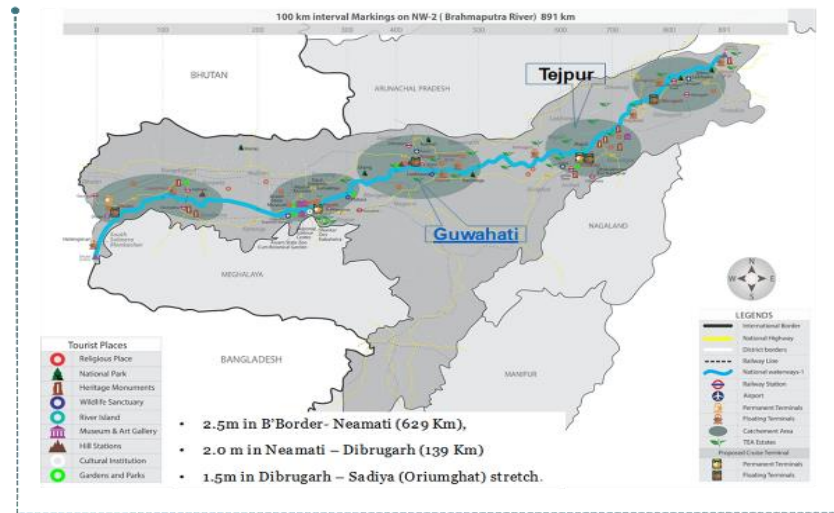
1. M/s Assam Bengal Navigation Co. Pvt. Ltd,
2. M/s Heritage River Journeys Pvt. Ltd,
3. M/s. Vivada Corporation
4. M/s Pandaw Cruise Pvt Ltd.

❖ **Status/Intervention by IWAI:**

- Community Jetties available at Sultanganj, Munger, Barh, Buxar and Ghazipur
- Floating Jetty is available at Bhagalpur and Varanasi, Upstream Farakka, Hazardwari, Matiari, Shantipur, Kalna, Bandel, IM Jetty, Botanical Garden
- High Level, Low-Level Jetty and floating jetty available at Patna
- Bunkering & Shore electric facility available at Varanasi, Patna, U/s Farakka, Hazardwari, Shantipur, Bandel, IM Jetty, GR Jetty and Botanical Garden.
- Day navigational aids in the entire stretch
- Night navigational aids from Kolkata to Ghazipur in the entire stretch
- Tug assistance in case of vessel in distress
- Pilotage

Exhibit 4.2 Proposed Route & River Cruise Terminals on NW 1





- ❖ **Cruise Circuit:** DHUBRI – DIBRUGARH ON NW-2 (Brahmaputra River) - **OPERATIONAL**
- ❖ **Category:** Luxury River Cruise
- ❖ **States Covered:** Assam

CRUISE WITH NIGHT STAY		DAY CRUISING
Operational Circuits	Proposed Circuits	Operational Circuits
i. Guwahati-Silghat/Tezpur (185km)	Guwahati-Pobitora	Guwahati, Dibrugarh, Tezpur & Guijan
ii. Guwahati-Neamati/Kamlabari (374km)		
iii. Guwahati-Dibrugarh (513km)		
iv. Guwahati-Goalpara-Dhubri (223km)		

- ❖ **Status / Present intervention so far:**
 - Floating Jetties at Dhubri, Jogighopa, Pandu, Tezpur, Silghat, Biswanath Ghat, Neamati and Dibrugarh.
 - Fixed Terminal available at Dhubri, Pandu, Bogibeel (Dibrugarh)
 - Bunkering is available at all the floating Jetties.
 - Shore electric facility available at Dhubri, Pandu and Bogibeel (Dibrugarh).
 - Day navigational aids in the entire stretch
 - Night navigational aids from Dhubri to Silghat. Plan to extend up to Bogibill.
 - Tug assistance in case of vessel in distress
 - Pilotage

❖ **List of Cruise with night stay:**

- MV Sukapha : *Guwahati-Neamati / Bogibeel*
- MV Charaidew II : *Guwahati-Neamati / Bogibeel*
- MV Mahabahu : *Dhubri / Guwahati-Neamati / Bogibeel*
- RV Kindat Pandaw : *Guwahati-Neamati / Bogibeel*
- MV Rudra Singha : *Guwahati-Neamati / Bogibeel*
- MV Rudra Singha II : *Guwahati-Neamati / Bogibeel*
- MV Ganga Vilas : *Varanasi-Dibrugarh*

❖ **List of Local Cruise:**

- MV Manashputra (Alfresco Grand) : *Guwahati*
- MV Jolporee : *Guwahati*
- MV Kohua Bon : *Guwahati*
- MV Mukuta : *Dibrugarh*
- MV Kanchanjangha : *Dibrugarh*
- SB OM - *Guijan*
- SB Royal Prince - *Guijan*



❖ **Cruise Circuit:** Kottappuram – Kollam (168 Km) on NW-3 (West Coast Canal) - **OPERATIONAL**

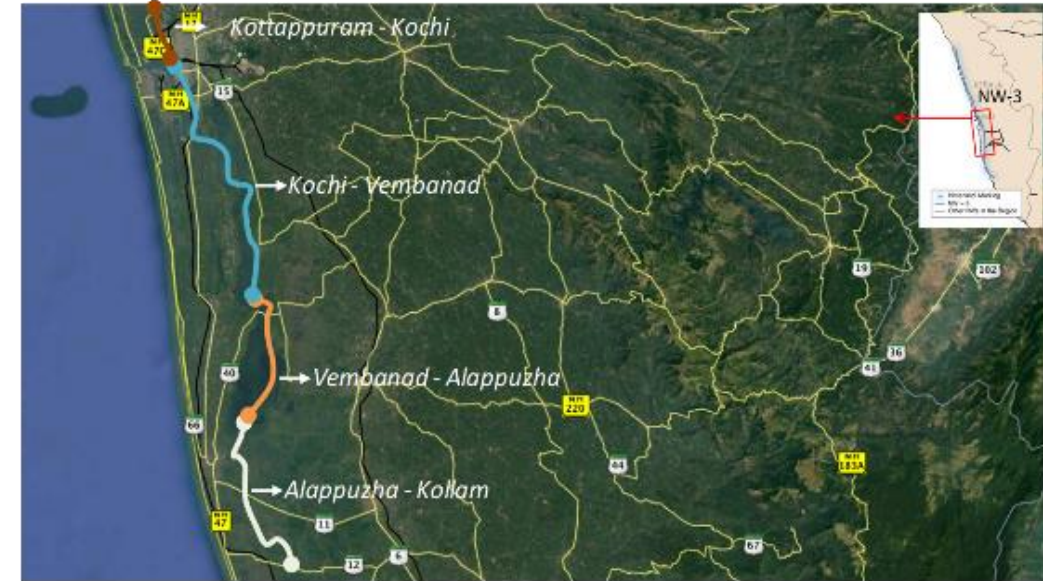
❖ **Category:** Luxury River Cruise

❖ **States Covered:** Kerala

CRUISE WITH NIGHT STAY		DAY CRUISING
Operational Circuits	Proposed Circuits	Operational Circuits
i. Kochi-Alapuzha (62.5 Km)	-	Alapuzha and Changanassery
ii. Alapuzha-Kollam(85.5 Km)		

Cruise Operators: M/s Adventure Resorts and Cruises Pvt. Ltd.
M/s. KSINC Limited

Exhibit 4.4 Mapping of identified routes on NW-3



❖ **Status / Intervention by IWAI:**

- Fixed terminal at Kottapuram, Aluva, Maradu, Vaikom, Thannermukkom, Alappuzha, Thrikunnappuzha, Kayamkulam and Kollam terminal
- 3 Floating pontoons are being provide at Vaikom, Thannermukkom, and Kayamkulam
- 312 Solar lighted FRP buoys & 17 Beacon lamp posts are maintained & operational to facilitate round the clock safe navigation in the entire stretch.
- Regular Thalweg survey are being carried out on monthly basis in all the stretches.
- RO-RO vessels M.V. CV RAMAN & M.V. ADI SHANKARA are operational at Bolgatty & Willington Island Terminals.
- Bank protection work in critical areas in Champakkara canal & WCC are being carried out.
- Bunkering is available at all the terminals.



❖ **Cruise Circuit:** Tourism jetty Patto – Chorao Island – Old Goa – Divar Island – Tolto ferry ghat – Cortalim on NW-27 (Cumberjua River) and NW-68 (Mandovi River) - **OPERATIONAL**

❖ **Category:** Luxury Cruise

❖ **States Covered:** Goa

❖ **Status:**

- The circuit is already active between Old Goa and Captain of Ports jetty at Panjim. There is no further movement of existing cruises. 2 jetties have been provided in this reach.
- Ten additional floating jetties on NW-27-(Cumberjua canal), 68 & 111- (Zuari River), awarded - Completion by June 2025.
- Dredging is planned on NW-27 and NW- 68.

Exhibit 4.5 Proposed Route & River Cruise Terminals on NW-27 & 68



- ❖ **Cruise Circuit:** Namkhana - Bhagabatpur - Sajnekhali – Hemnagar on NW-97 (Sundarbans) and IBP Route- **OPERATIONAL**
- ❖ **Category:** Luxury River Cruise
- ❖ **States Covered:** West Bengal

CRUISE WITH NIGHT STAY		DAY CRUISING
Operational Circuits	Proposed Circuits	Operational Circuits
i. Kolkata-Sundarbans (306 KM)		Kolkata and Sundarbans
ii. Kolkata-Dhaka (896 KM)		
iii. Kolkata-Pandu via Dhaka (1439 Km)		
iv. Kolkata – Bali Island (235 Km)		

- ❖ **Status:**
 - Floating Jetty at Namkhana
 - Landing facility at Bali Island (Jetty under construction)
 - RCC Finger Jetty at Bhagabatpur and Sajnekhali
 - IWAJ jetty planned at Hemnagar – Work order issued for construction of steel pontoon jetty.
 - Land for shore facilities to be acquired for all the above locations.
 - Day and night navigational facilities
 - Pilotage

Exhibit 4.7 Proposed Route & River Cruise Terminals on NW-97

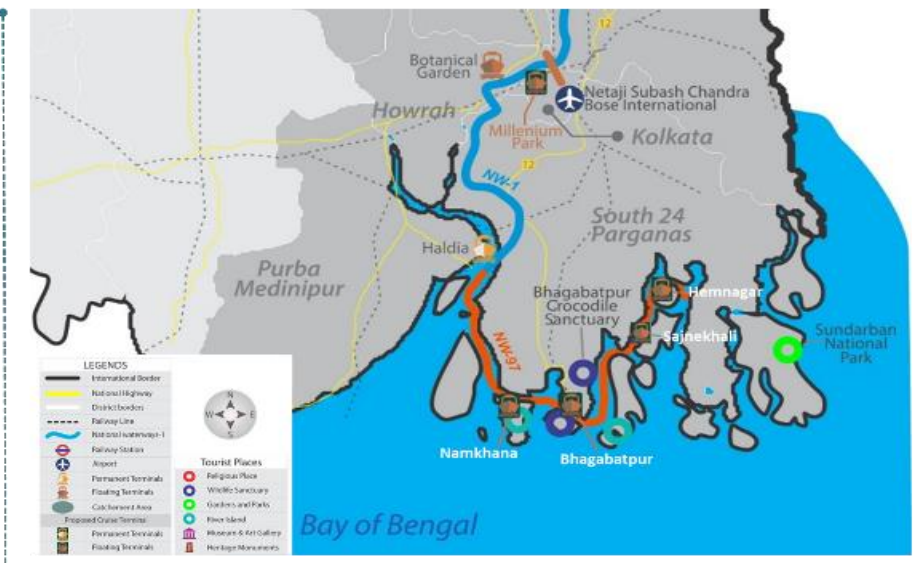
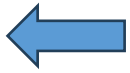


Exhibit 4.8 Mapping of identified routes on IBP





❖ **Cruise Circuit:** Bhitarkanika-Hukitola-Paradip on NW-5 (East Coast Canal) - **OPERATIONAL**

❖ **States Covered:** Odisha

❖ **Category:** Budget River Cruise

Status:

➤ **Bhitarkanika:**

8 jetties HDPE pontoon jetties are available inside the core reserve forest. (Khola , Dangamal, Bagagahan, Suajore, Kalibhanjatia, Gupti, Ekakula, HabaiKhati)

➤ **Hukitola Island:**

HDPE pontoon jetty is available for embarking and disembarking of passengers.

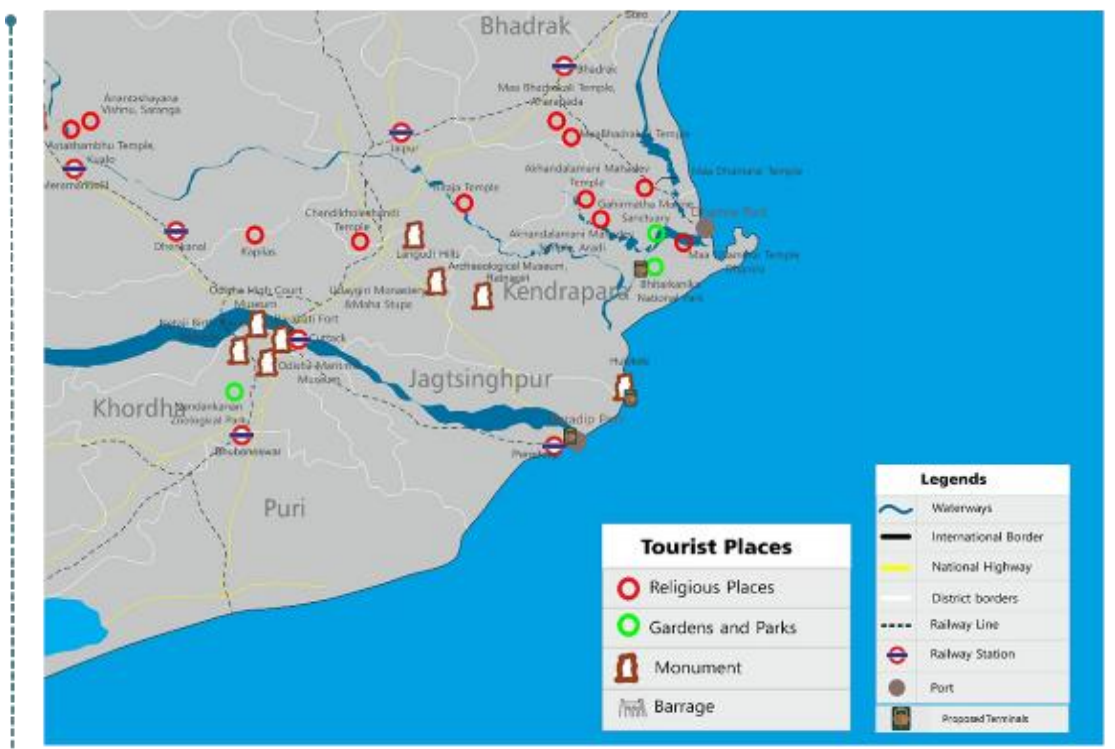
➤ **Paradip Beach/Port:**

- RCC Jetty of Fishing Harbor is available
- Paradip Port with all modern amenities for handling of cargo.

➤ **Gupti ghat:**

- 1 floating terminal is provided.

Exhibit 4.10 Proposed Route & River Cruise Terminals on NW-5



➤ Riverine Distance – NW-5 (River Brahmani)

○ Bhitarkanika(Talchua) – Hukitola	- 65 km
○ Hukitola – Paradip beach	- 26 km
○ <u>Paradip Beach- Paradip Port</u>	- 07 km
Total	- 98 km

❖ **Cruise Circuit:** Alappuzha and Changanassery (29.12 Km) on NW-8 (Alappuzha- Changanassery Canal) - **OPERATIONAL**

❖ **Category:** Budget River Cruise

❖ **States Covered:** Kerala

❖ **Status / Intervention by IWAI :**

- Permanent terminal at Alappuzha
- 15 Solar Lights FRP Buoys are maintained and operational to facilitate round the clock safe navigation in the entire stretch
- Additional new 15 Nos of Beacon lamps post are being installed in the NW-8 at various locations for smooth movement of IWT Vessels during night time.
- Regular Thalweg survey are being carried out on monthly basis in all the stretches.
- Bank protection work in critical areas in Alappuzha – Changanassery (Vellinayanadu) are being carried out.
- Currently Passenger and Tourist boats are operating in NW-8.

Exhibit 4.11 Mapping of identified routes on NW-8



❖ **Cruise Circuit:** Alappuzha and Kottayam (Kodimatha – Pallom- 38 Km) on NW-9 (Alappuzha- Kottayam – Athirampuzha Canal)- **OPERATIONAL**

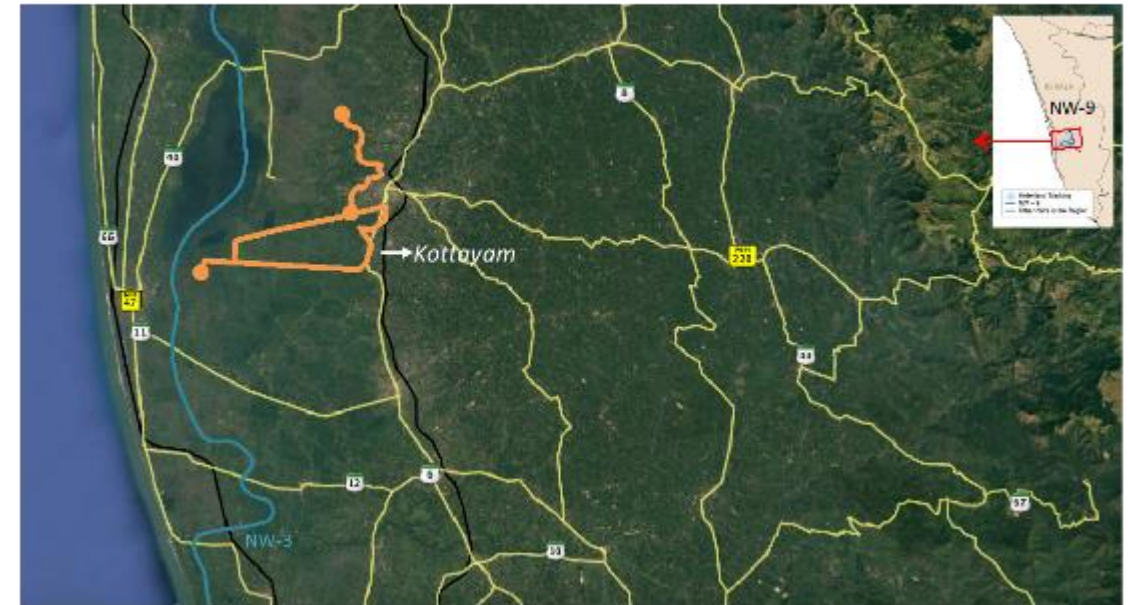
❖ **Category:** Budget River Cruise

❖ **States Covered:** Kerala

❖ **Status / Intervention by IWAI :**

- Permanent terminal at Alappuzha
- One floating terminal proposed at Alappuzha
- 25 Solar Lights FRP Buoys are maintained and operational to facilitate round the clock safe navigation in the entire stretch
- Additional new 15 Nos of Beacon lamps post are being installed in the NW–9 at various locations for smooth movement of IWT Vessels during night time.
- Regular Thalweg survey are being carried out on monthly basis in all the stretches.
- Bank protection work in critical areas in Alappuzha – Kottayam (Kodimatha – Pallom) are being carried out.
- Currently Passenger and Tourist boats are operating in NW–9.

Exhibit 4.12 Mapping of identified routes on NW-9



Cruise Circuit: Engineering College - Digha Bridge (9 KM), Patna on NW-1 (River Ganga)- **OPERATIONAL**

Category: Local Ferry Cruise

❖ **States Covered:** Bihar

❖ **Status:**

- NIT Ghat : Berthing facility is provided by BSTDC, Govt. of Bihar
- Digha: Floating Jetty is provided.
- 1 RO Pax vessel (M.V. Paramhans) is available and being operated by Bihar tourism
- Dredging/Bandalling in progress
- Day/Night Navigation aids available



❖ **Cruise Circuit:** Aradi - Nalitpatia - Khola on NW-14 (River Baitarani):
OPERATIONAL

❖ **Category:** Local Ferry Cruise

❖ **States Covered:** Odisha

❖ **Status:**

- One RCC jetty at Nalpatia (chainage 27 km) is available for accommodating country boat.
- The distance from Akhandalamani (Mahadev) Shiva Temple, Aradi to jetty is approximately 2 km.
- Passenger boats in the region are operated both by the Odisha Tourism Development Corporation (OTDC) and private boat operators.
- Riverine Distance – NW-14 (River Baitarani)
 - Aradi – Nalitpatia - 27.00 km
 - Aradi – Khola - 30.50 km
 - Nalitpatia- Khola - 5.50 km

* Nalitpatia is a confluence point of NW-14 with NW-5 at chainage 24 km

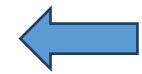
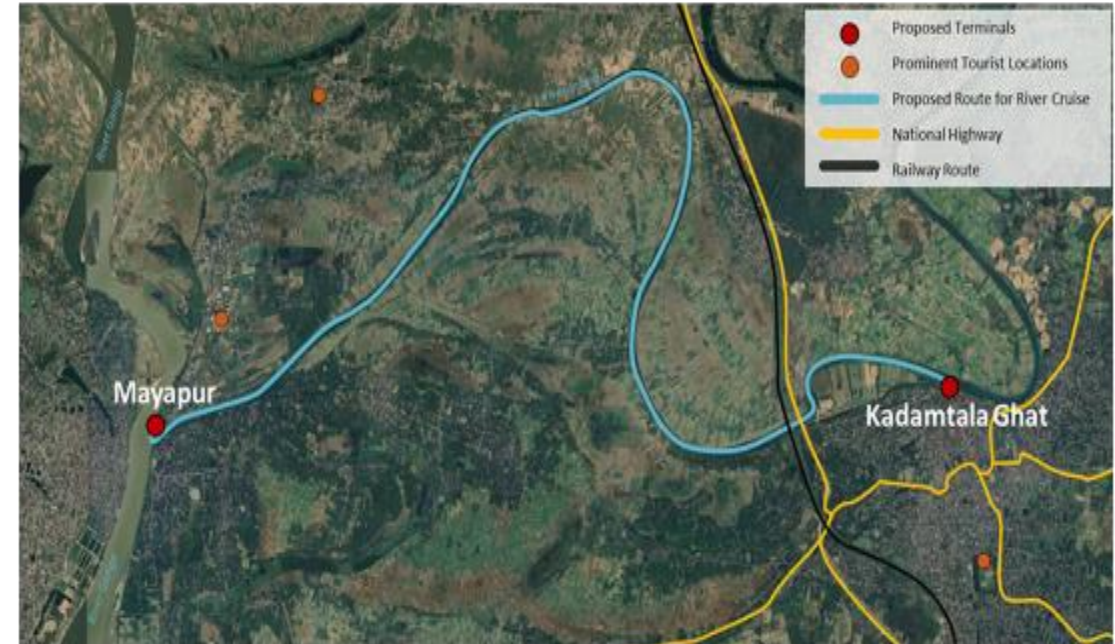
Exhibit 4.25 Proposed Route & River Cruise Terminals on NW-14



Cruise Circuit: Mayapur - Kadamtala Ghat (19.5 km) on NW-47 (Jalangi River) –**OPERATIONAL**

- ❖ **Category:** Local Ferry Cruise
- ❖ **States Covered:** West Bengal
- ❖ **Status/ Interventions by IWAI:**
 - Two community jetties proposed at this location
Land to be acquired for shore facilities.

Exhibit 4.29 Proposed Route & River Cruise Terminals on NW-47



- ❖ **Cruise Circuit:** Statue of Unity on NW-73 (Narmada River)- **OPERATIONAL**
- ❖ **Category:** Local Ferry Cruise
- ❖ **States Covered:** Gujarat
- ❖ **Status:**
 - This circuit is operational with a fixed jetty constructed by Gujarat Maritime Board.



❖ **Cruise Circuit:** Gandhi Bridge – Nehru Bridge, Ahmedabad on NW-87 (Sabarmati River):

OPERATIONAL

❖ **Category:** Local Ferry Cruise

❖ **States Covered:** Gujarat

❖ **Status:**

➤ The cruise is being run by Ahmedabad Municipal Corporation.

Exhibit 4.36 Proposed Route & River Cruise Terminals on NW-87



❖ **Cruise Circuit:** Barkul - Kalijai - Nalaban - Nairi – Satapada on Chilika Lake (Outside National Waterways): **OPERATIONAL**

❖ **Category:** Local Ferry Cruise

❖ **States Covered:** Odisha

❖ **Status:**

- Ports & IWT, Govt. of Odisha has developed two jetties one at Satapada & one at Balugaon for access of passengers & tourists.
- The Govt. motor launch facilities is available at Balugaon for transportation of passengers from Balugaon (Khurda) to Krushnaprasad Garh (Puri) every day.
- More than thousands of private mechanized country made boats (Bhut-bhuties) are available around the lake mainly at Satapada recreational harbour & Balugaon govt jetties for movement of tourist to Kalijai temple, Nalabana sanctuary, Dolphin & bird sightseeing.
- Apart from this many Govt organisations like CDA (Chilika Development Authority), OTDC (Odisha tourism Development Corporation), other private operators operate boating & luxury cruise services around the lake for tourists.
- CDA (Chilika Development Authority) operates RO-RO services from Satapada(Puri) to Jhanikuda(Ganjam) for transportation of passengers & goods daily.
- Currently, Ports & IWT, Govt of Odisha is developing two RO-PAX jetties i.e at Balugaon (Khurda) & Krushnaprasad Garh (Puri) under Sagarmala Project for safe movement of passengers & vehicles.
- Distance of prominent locations in Chilika lake from Barkul:
 - Barkul- Kalijal temple - 4 km
 - Barkul – Nalabana - 11.30 km
 - Barkul – Nairi - 20 km
 - Barkul – Satapada - 31.50 km

Exhibit 4.39 Mapping of identified routes on Chilika Lake



DEVELOPMENT IN PROGRESS

13 CIRCUITS

❖ **Cruise Circuit:** Upstream Sardar Sarovar Dam- Barwani on NW-73 (River Narmada)- **DEVELOPMENT IN PROGRESS**

❖ **Category:** Luxury River Cruise

❖ **States covered:** Gujarat and Madhya Pradesh

❖ **Status:**

- 2 jetties for cruise tourism on river Narmada (NW-73, Gujarat) to be completed by Mar 25.
- 2 jetties provided in MP on Narmada River.
- Tripartite MoU signed between IWAI, MP and Gujarat for promoting river cruise tourism from Statute of Oneness (MP) to Statue of Unity (Gujarat).
- Project is underway.



❖ **Cruise Circuit:** Srisailam – Nagarjuna Sagar Dam on NW-4 (Krishna-Godavari) - **DEVELOPMENT IN PROGRESS**

❖ **Category:** Budget River Cruise

❖ **States Covered:** Andhra Pradesh, Telangana

❖ **Length of active stretch in Kilometres:** 16 km

❖ **Intervention by IWAI so far :**

- IWAI conducted a Joint Site Inspection along with the officials of Telangana Tourism Development Corporation, Govt. of Telangana
- Tenders invited for “Design, construction, supply installation, testing and commissioning floating Steel pontoons (03 nos) and steel Gangways (03 nos) for providing Floating Terminal facilities in the river Krishna, Telangana in NW-4”.
- Proposed locations of 3 nos Pontoons:
 - Nagarjuna Sagar Dam (NW-4),
 - Nagarjuna Konda (Island) (NW-4),
 - U/s of Srisailam Dam (NW-4) -
- Tender Closing date: 22.02.2025.

Exhibit 4.9 Nagarjuna Sagar–Srisailam–Akkamahadevi Caves Proposed Route



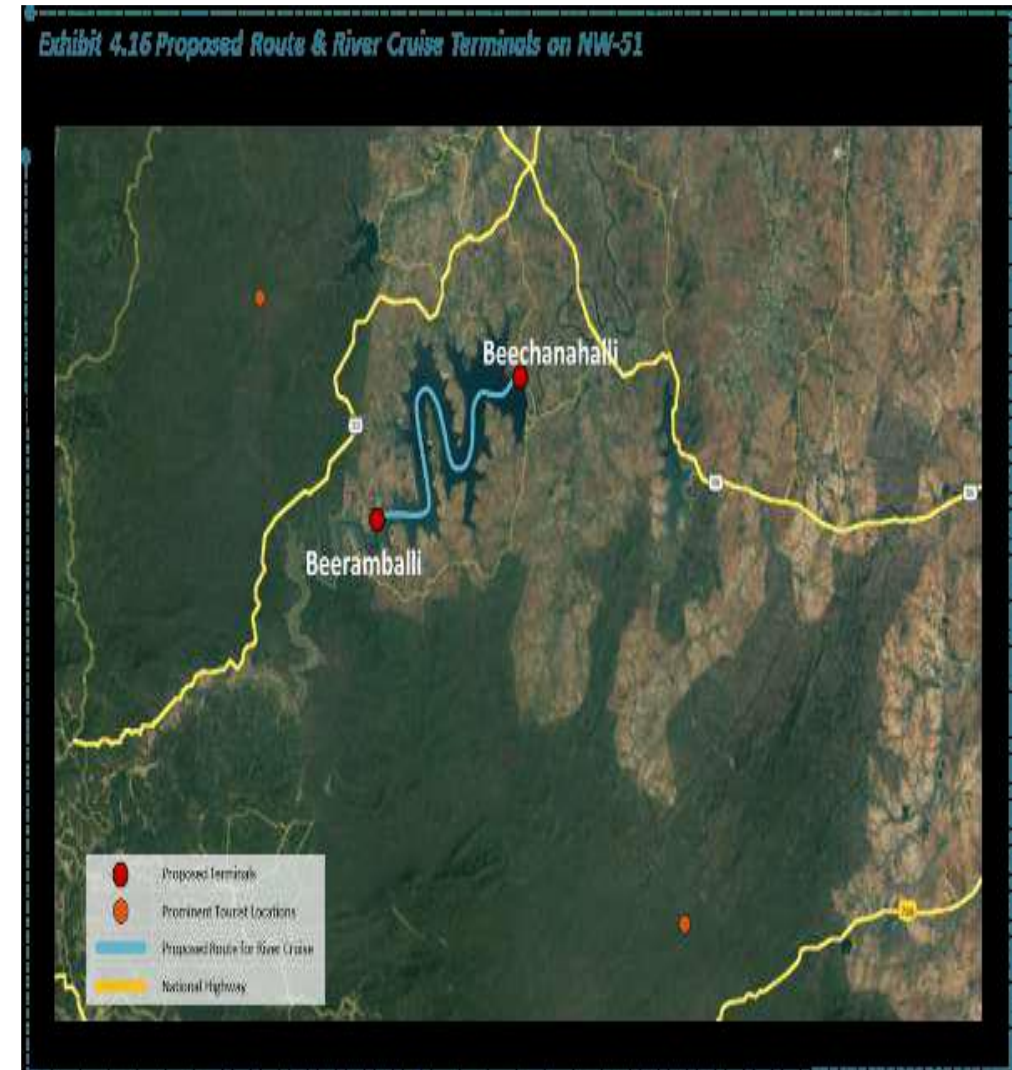
❖ **Cruise Circuit:** Beechanahalli – Beeramballi on NW-51
(Kabini River): **DEVELOPMENT IN PROGRESS**

❖ **Category:** Budget River Cruise

❖ **States Covered:** Karnataka

➤ 1 jetty at Beeramballi is being provided.

➤ River Kabini (NW-51) – Jetties for cruise tourism with navigational aids/ transit lights.

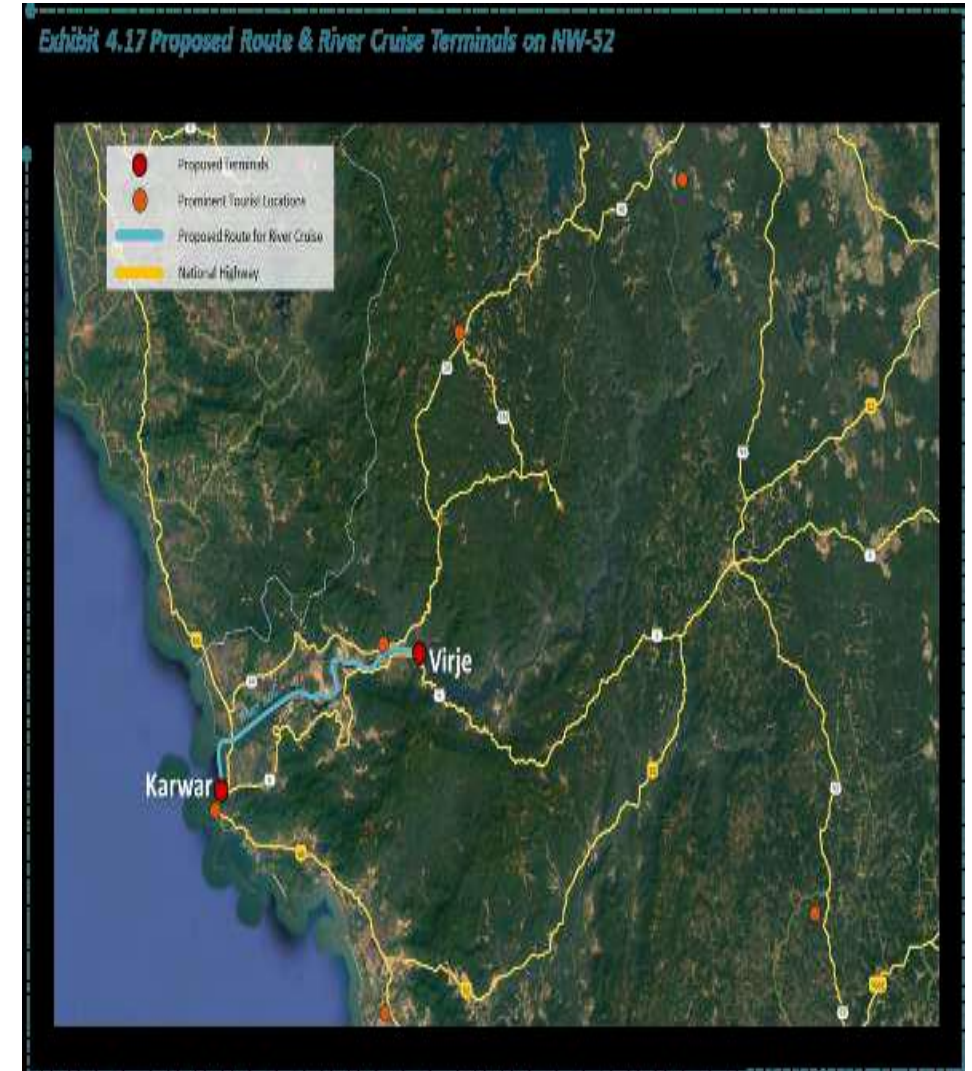


❖ **Cruise Circuit:** Karwar Port – Virje near Kadra Dam on NW-52 (Kali River)- **DEVELOPMENT IN PROGRESS**

❖ **Category:** Budget River Cruise

❖ **States Covered:** Karnataka

- Jetty(24 m x 6m) at Sadashivgad already installed and is proposed to be augmented to 30 m x 6 m.
- Navigational aids in river Kali (NW-52) will be provided.
- The navigation till Kadra Dam is not happening as of now. It is concentrated from sadashivgad to Sea.



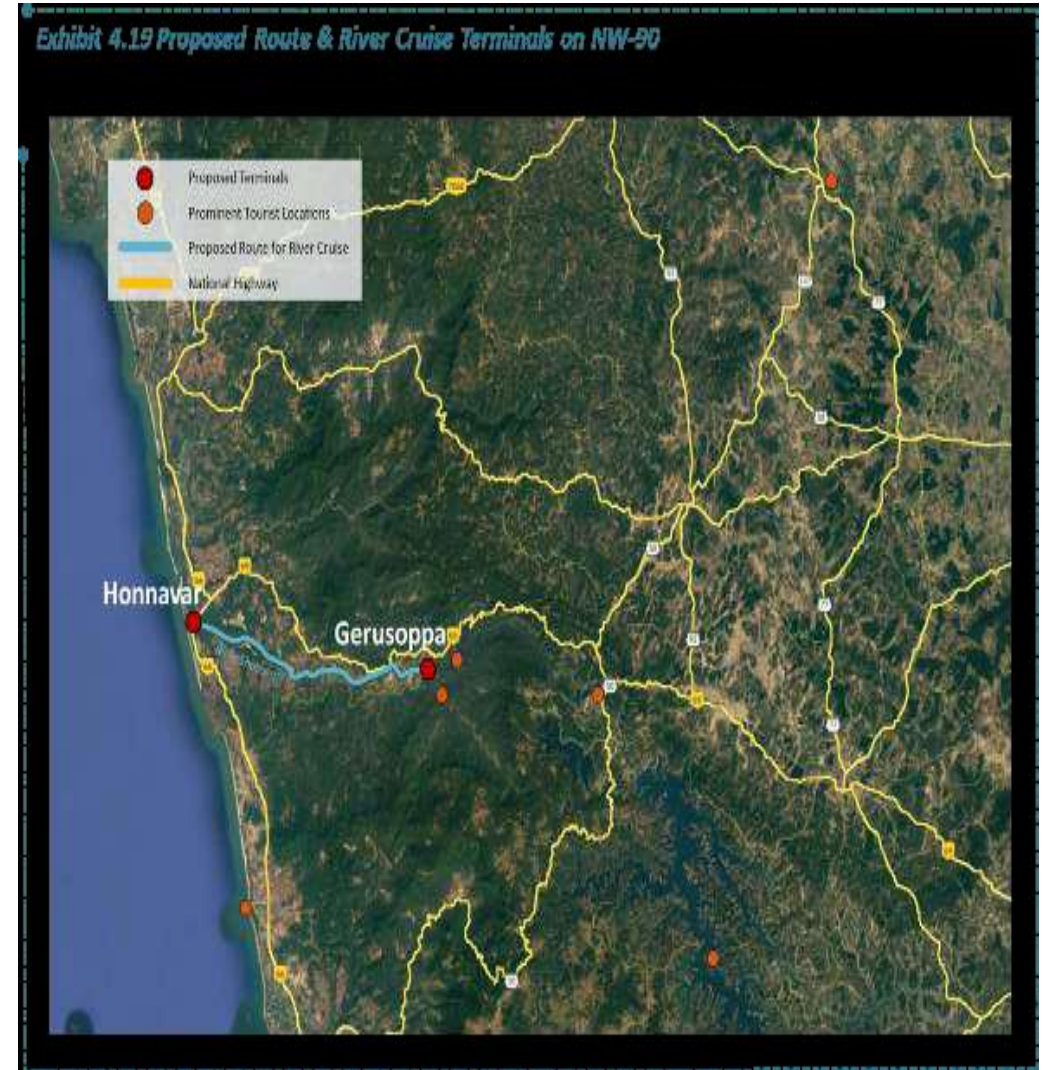
❖ **Cruise Circuit:** Honnavar Port – Gersoppa on NW-90
(Sharavati river): **DEVELOPMENT IN PROGRESS**

❖ **Category:** Budget River Cruise

❖ **States Covered:** Karnataka

➤ Jetty being provided at both the places.

➤ Navigational Aids will also be provided.



- ❖ **Cruise Circuit:** Dumas – Old Surat Castle on NW 100 (Tapi river)- **DEVELOPMENT IN PROGRESS**
- ❖ **Category:** Budget River Cruise
- ❖ **States Covered:** Gujarat
- ❖ **Status:**
 - 2 jetties being provided.
 - Dredging also being carried out in Dumas Channel.



❖ **Cruise Circuit:** Pollavaram-Pochavaram on NW-4: Development In Progress

❖ **Category:** Local Ferry Cruise

❖ **Length of active stretch in Kilometres:** 45 km

❖ **Intervention by IWAI so far :**

- Joint Site Inspection along with the officials of Andhra Pradesh Tourism Development Corporation, Govt. of Andhra Pradesh conducted.
- Tenders invited for floating Steel pontoons (06 nos) and steel Gangways (06 nos) for providing Floating Terminal facilities **in the river Godavari, Andra Pradesh in NW-4**” with closing date 22.02.2025.

Proposed locations of 6 nos pontoons:

1. Gandipochamma temple (NW-4) 02 nos Steel
2. Pochavaram (NW-4) 02 nos Steel
3. Perantapalli Village (NW-4) 02 nos Steel

❖ **List of local cruise / ferry operators engaged in river tourism:**

- Andhra Pradesh Tourism Development Corporation, Govt. of Andhra Pradesh.
- M/s. Sri Veeraswara Papikondalu Boat Owners Welfare Association, Private operators.
- M/s. Bhadradi Papikondalu Boat Association, Private operators.

Exhibit 4.23 Proposed Route & River Cruise Terminals on NW-4 (Polavaram – Pochavaram)



- ❖ **Cruise Circuit:** Srisaillam – Akkamahadevi Caves on NW-4 (Krishna-Godavari) - Development In Progress
- ❖ **Category:** Local Ferry Cruise
- ❖ **States Covered:** Andhra Pradesh, Telangana
- ❖ **Length of active stretch in Kilometres:** 10 km
- ❖ **Intervention by IWAI so far :**
 - IWAI conducted a Joint Site Inspection along with the officials of Telangana Tourism Development Corporation, Govt. of Telangana
 - Tenders invited for floating Steel pontoons (03 nos) and steel Gangways (03 nos) for providing Floating Terminal facilities in the river Krishna, Telangana in NW-4”.
 - Proposed locations of 3 nos pontoons:
 - Nagarjuna Sagar Dam (NW-4),
 - Nagarjuna Konda (Island) (NW-4),
 - U/s of Srisaillam Dam (NW-4) – **Local River Cruise.**
 - Tender Closing date: 22.02.2025.

Exhibit 4.9 Nagarjuna Sagar–Srisaillam–Akkamahadevi Caves Proposed Route



Cruise Circuit: Naya Ghat - Guptar Ghat on NW-40 (River Ghaghra) (11KM)- DEVELOPMENT IN PROGRESS

❖ **Category:** Local Ferry Cruise

❖ **States Covered:** Uttar Pradesh

❖ **Status:**

- Floating Jetty available.
- Shore electric facility available.
- 1 Hybrid catamaran vessel (M.V. Guh) is available and being operated by U.P. tourism
- Dredging/Bandalling under progress
- Day navigational aids available

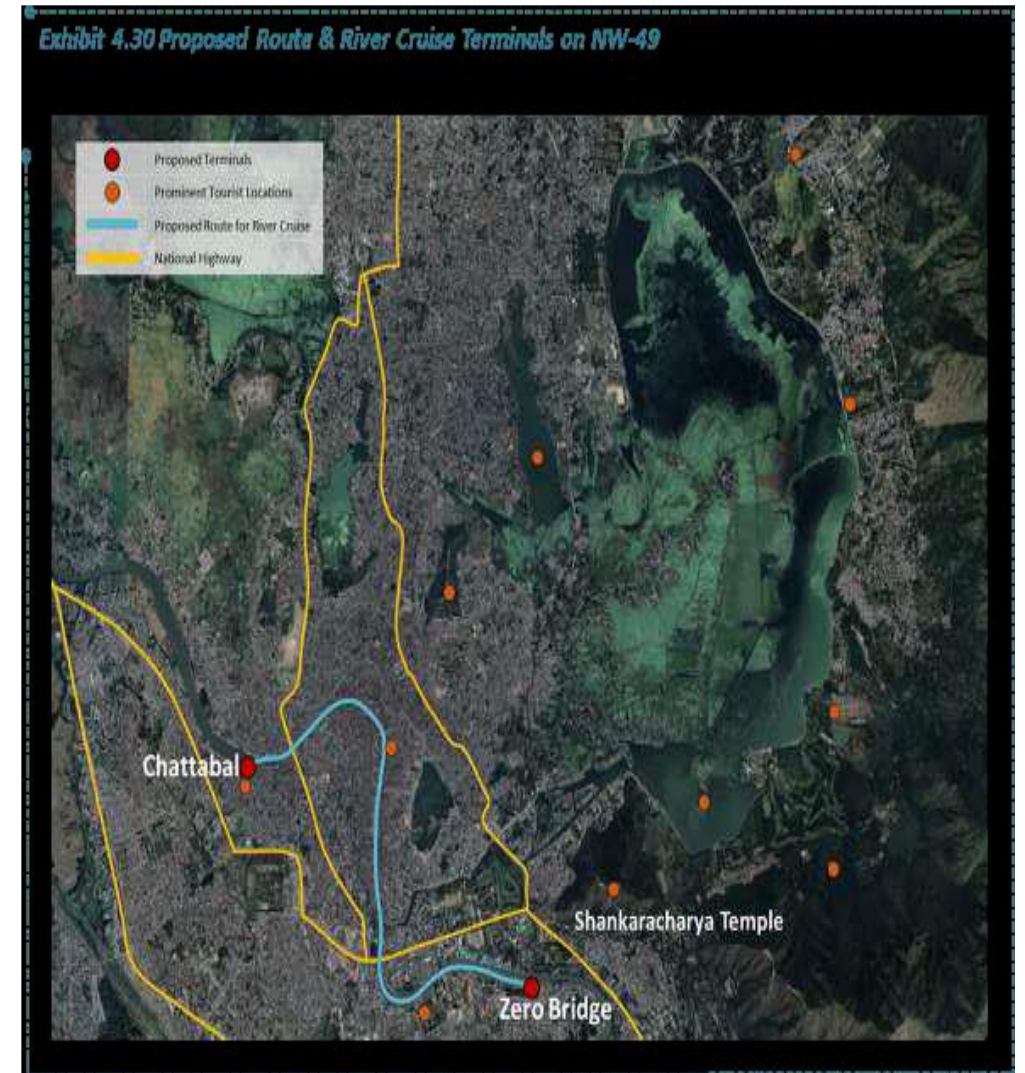
Exhibit 4.27 Proposed Route & River Cruise Terminals on NW-40



Cruise Circuit: Zero bridge – Chattabal weir on NW-49 (River Jhelum), NW-26 (River Chenab), NW-84 (River Ravi)

DEVELOPMENT IN PROGRESS

- ❖ **Category:** Local Ferry Cruise
- ❖ **States Covered:** Jammu & Kashmir
- ❖ **Status:** Tendering under process.
- **River Jhelum-** has been declared as NW-49 from Sangam(Anantnag) to Wular Lake.
 - ❑ The entire stretch is being operationalized.
 - ❑ Provision of 7 floating jetties, fairway maintenance & Navigational Aids.
- **River Chenab (NW-26)-**
 - ❑ Provision of 2 floating jetties.
- **River Ravi (NW-84)-**
 - ❑ Provision of 1 floating jetties.



Cruise Circuit: Gaimukh – Panju Island on NW-53 (Vasai Creek and Ulhas River System)

DEVELOPMENT IN PROGRESS

- ❖ **Category:** Local Ferry Cruise
- ❖ **States Covered:** Maharashtra
- ❖ **Status:**
 - Navigational Aids considered in the scheme.
 - Small boats run in this stretch.
 - Jetties exists at Vasai-Mira Bhayandar and Panju Island.



❖ **Cruise Circuit:** Murud – Janjira – Padmagurg (on NW-83 Rajpuri Creek) - **DEVELOPMENT IN PROGRESS**

❖ **Category:** Local Ferry Cruise

❖ **States Covered:** Maharashtra

❖ **Status:**

➤ Cruise Tourism infrastructure at Agardanda Fort (NW-83)

➤ Already catered in the scheme for Maharashtra NWs



Vrindavan to Mathura stretch) – 22 km - ACTION TAKEN FOR DEVELOPMENT

Category: Local Ferry Cruise

DPR RECOMMENDATION:

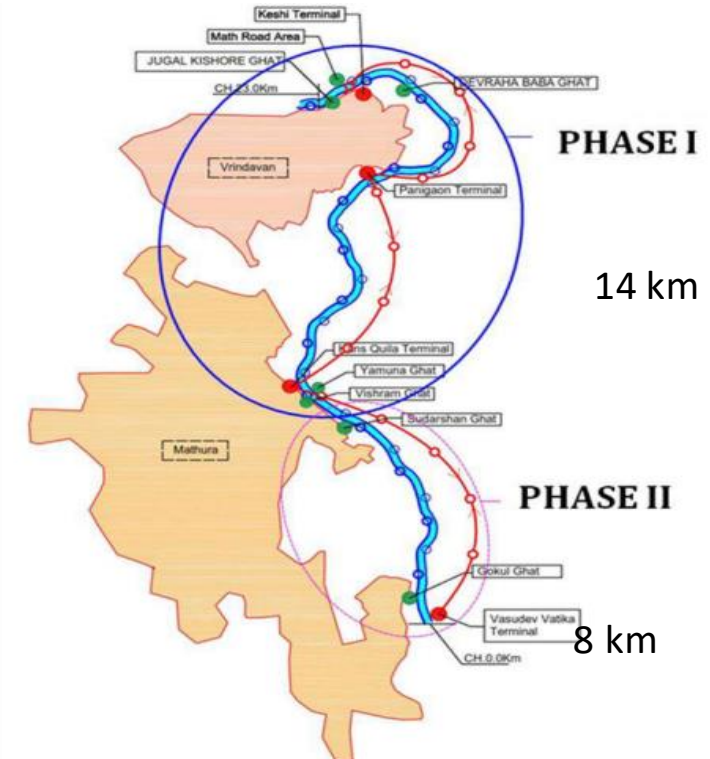
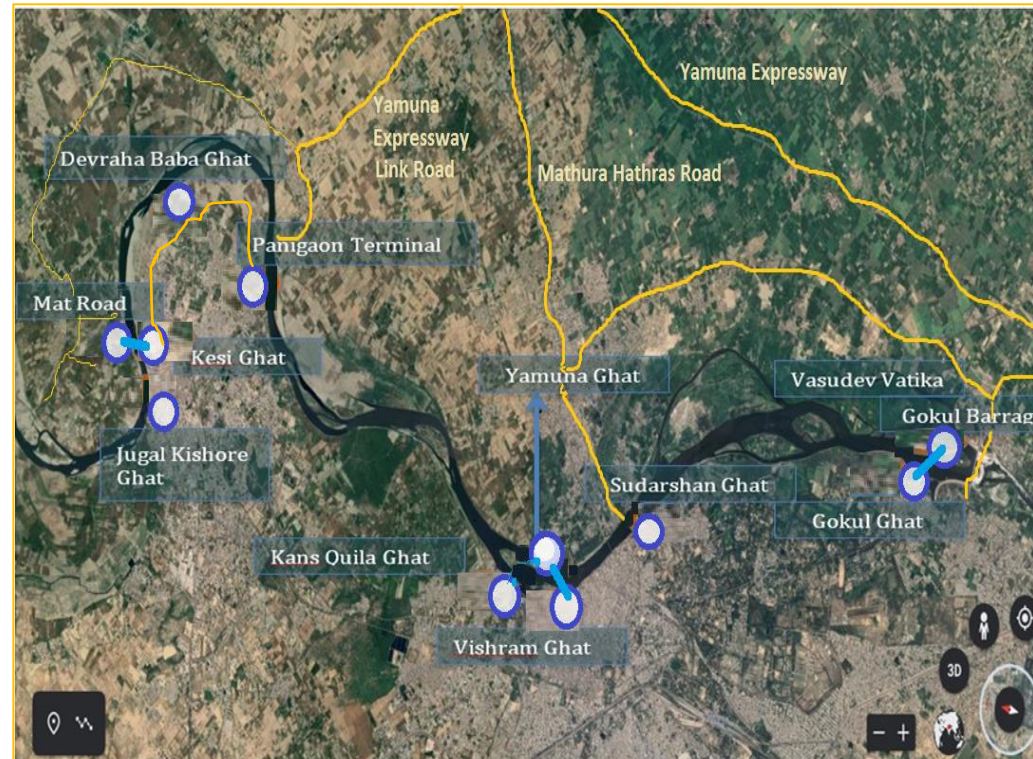
- Construction of jetties -11 jetties (08 nos. in Phase-1, 03 nos. in Phase-2)–Cost: Rs.18 Cr. **(by IWAI)**
- Shore facility (Cost: Rs. 8 Cr.) – **(by State Govt.)**
- Fairway development (Maintenance dredging) – Cost: Rs. 8.07 Cr. **(by IWAI)**

Phase I Kans Quila Ghat to Jugal Kishor Ghat (Approx. 14 km)

1. Vishram Ghat
2. Yamuna Ghat
3. Kans Quila Ghat
4. Panigaon Ghat
5. Devraha Baba Ghat
6. Keshi Ghat
7. Math Road Area Ghat
8. Jugal Kishor Ghat

Phase II- Kans Quila to Gokul Barrage (Approx. 8 km)

1. Vasudev Vatika
2. Gokul Ghat
3. Sudharshan Ghat



ACTION TO BE TAKEN

6 CIRCUITS

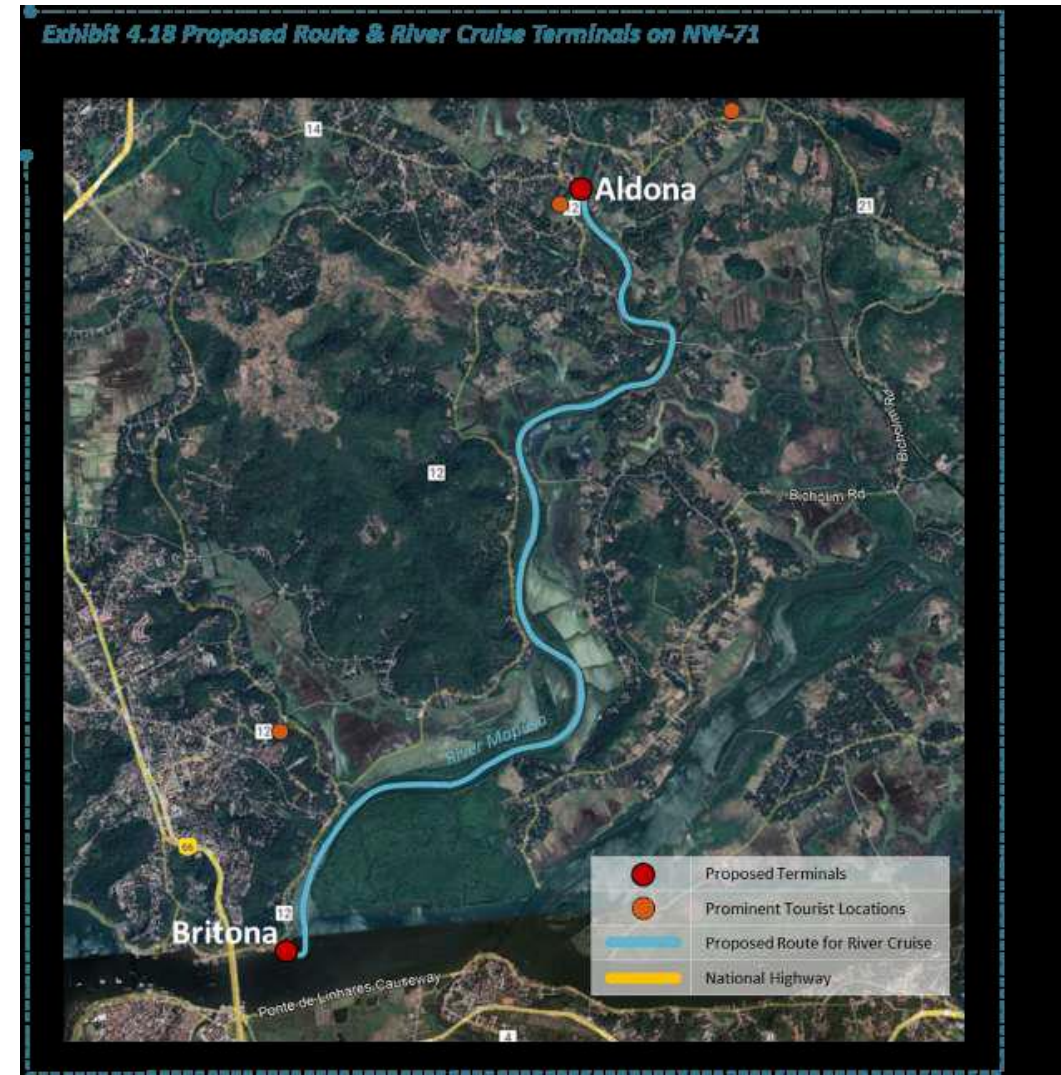
❖ **Cruise Circuit:** Britona Jetty–Aldona Jetty on NW-71 (Mapusa / Moide River) - **ACTION TO BE TAKEN FOR DEVELOPMENT**

❖ **Category:** Budget River Cruise

❖ **States Covered:** Goa

❖ **Status:**

- No action taken as the NW is narrow.
- Dredging is being taken up at a few locations.
- Aldona is well connected by road and there are no major places of tourist interest.



Cruise Circuit: Pucca Bridge - Gomti Barrage on NW-42 (Gomti River) - ACTION TO BE TAKEN FOR DEVELOPMENT

- ❖ **Category:** Local Ferry Cruise
- ❖ **States Covered:** Uttar Pradesh
- ❖ **Status:**
 - Jetty yet to be provided.

Exhibit 4.28 Proposed Route & River Cruise Terminals on NW-42



Cruise Circuit: Mukutmanipur – Banpukurtia on NW-60 (Kumari River) (10 Km) - ACTION TO BE TAKEN UP FOR DEVELOPMENT

- ❖ **Category:** Local Ferry Cruise
- ❖ **States Covered:** West Bengal
- ❖ **Status/ Interventions by IWAI:**
 - Two community jetties proposed at this location
 - Land to be acquired for shore facilities.

Exhibit 4.32 Proposed Route & River Cruise Terminals on NW-60



❖ **Cruise Circuit:** Near Atal Setu – Ranjit Sagar Dam on NW-84 (Ravi River) - **ACTION TO BE TAKEN UP FOR DEVELOPMENT**

❖ **Category:** Local Ferry Cruise

❖ **States Covered:** Jammu & Kashmir, Punjab

❖ **Status:**

➤ River Cruise Tourism proposed- 1 Jetty(Sohar)- Scheme approved, tender under approval.



❖ **Cruise Circuit:** Harihareshwar on NW-89 (Savitri River):
ACTION TO BE TAKEN UP FOR DEVELOPMENT

❖ **Category:** Local Ferry Cruise

❖ **States Covered:** Maharashtra

❖ **Status:**

➤ Cruise tourism infrastructure at Harihareshwar on NW-89

➤ Included in the scheme for Maharashtra NWs.

Exhibit 4.37 Proposed Route & River Cruise Terminals on NW-89



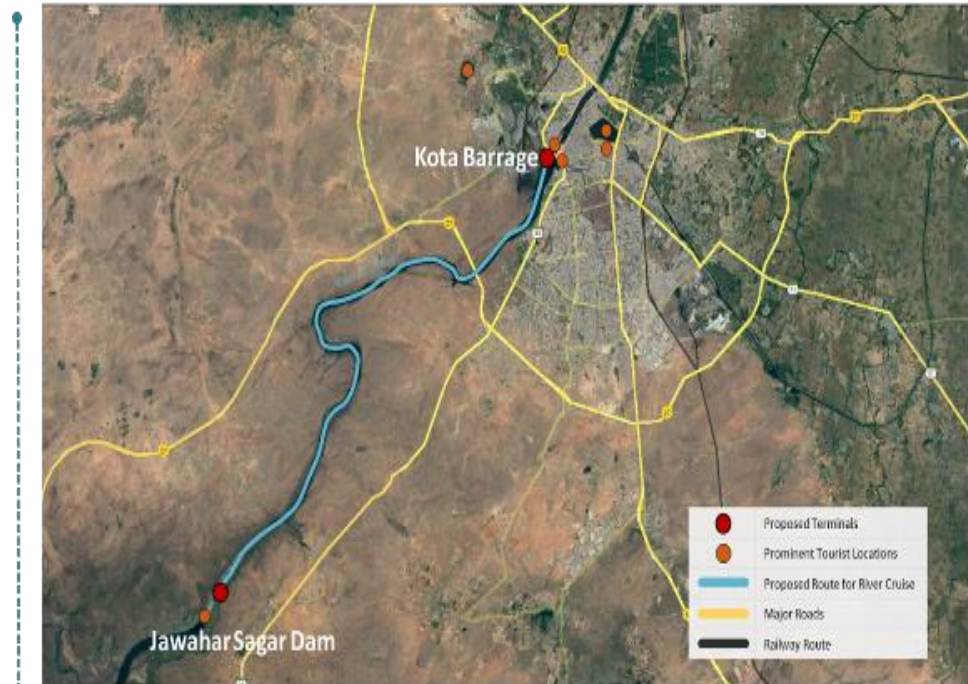
❖ **Cruise Circuit:** Kota Barrage – Jawahar Sagar Dam on River Chambal (Outside National Waterways): **ACTION TO BE TAKEN UP FOR DEVELOPMENT**

❖ **States Covered:** Rajasthan

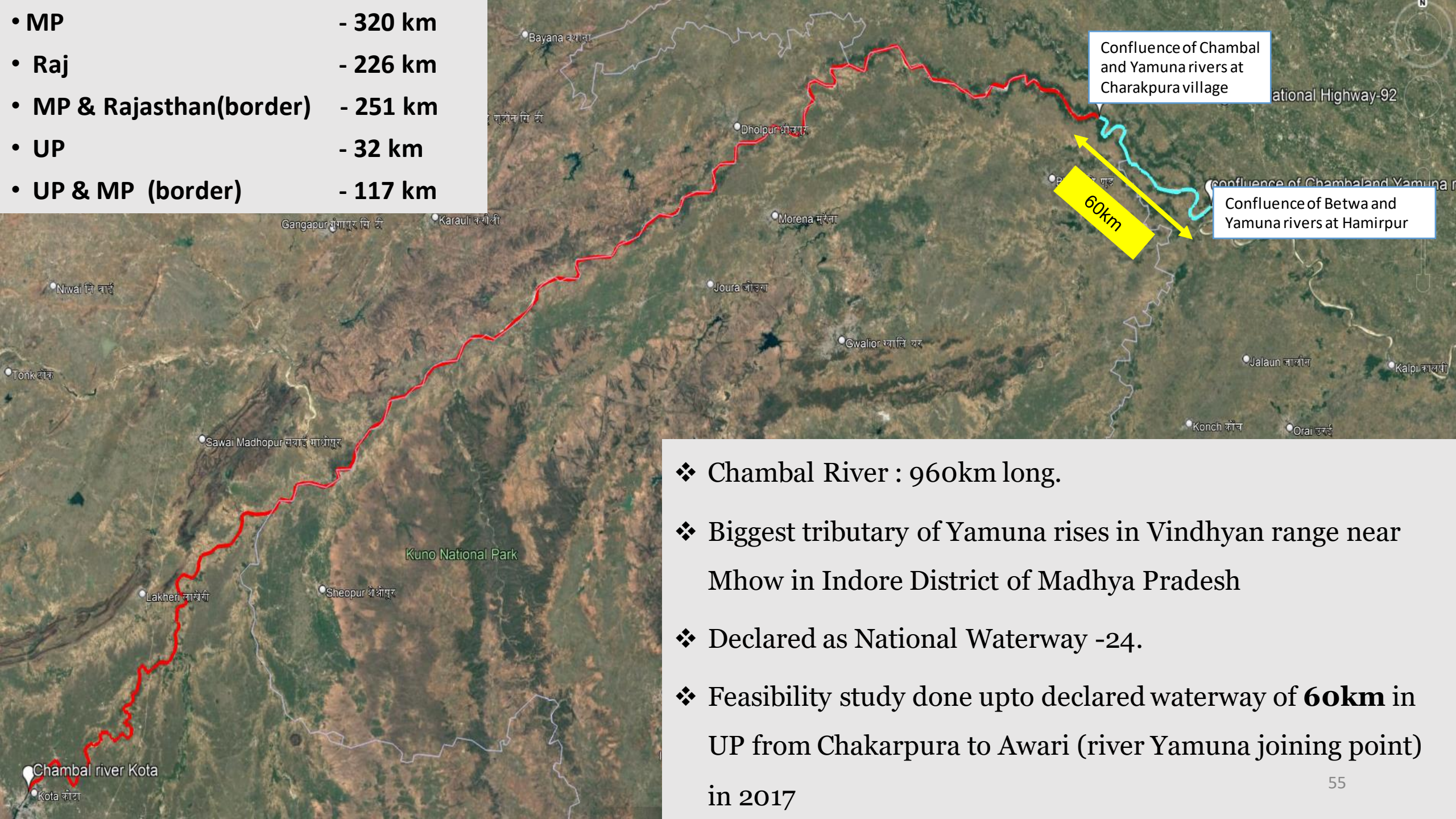
❖ **Status:**

- On request of Govt. of Rajasthan, a joint site visit was conducted in September, 2021 to assess the feasibility of cruise tourism in u/s of Kota Barrage (13 km) in Kota, Rajasthan with the officials of Govt. of Rajasthan (not declared as National waterway).
- Total 13 km stretch from u/s of Kota Barrage up to Garadiya Mahadev found feasible for cruise boat operation.
- Report submitted to MoPSW on 09.03.2020
- Webinar conducted on 06.01.2021 with officials of MoPSW, IWAI and Govt. of Rajasthan. Outcome intimated to MoPSW on 12.01.2021.
- Govt. of Rajasthan was intimated by IWAI to extend all technical support in respect of jetties, surveys and related infrastructure vide D.O. dt. 19.01.2021.
- Govt. of Rajasthan to respond on the same.

Exhibit 4.26 Proposed Route & River Cruise Terminals on River Chambal

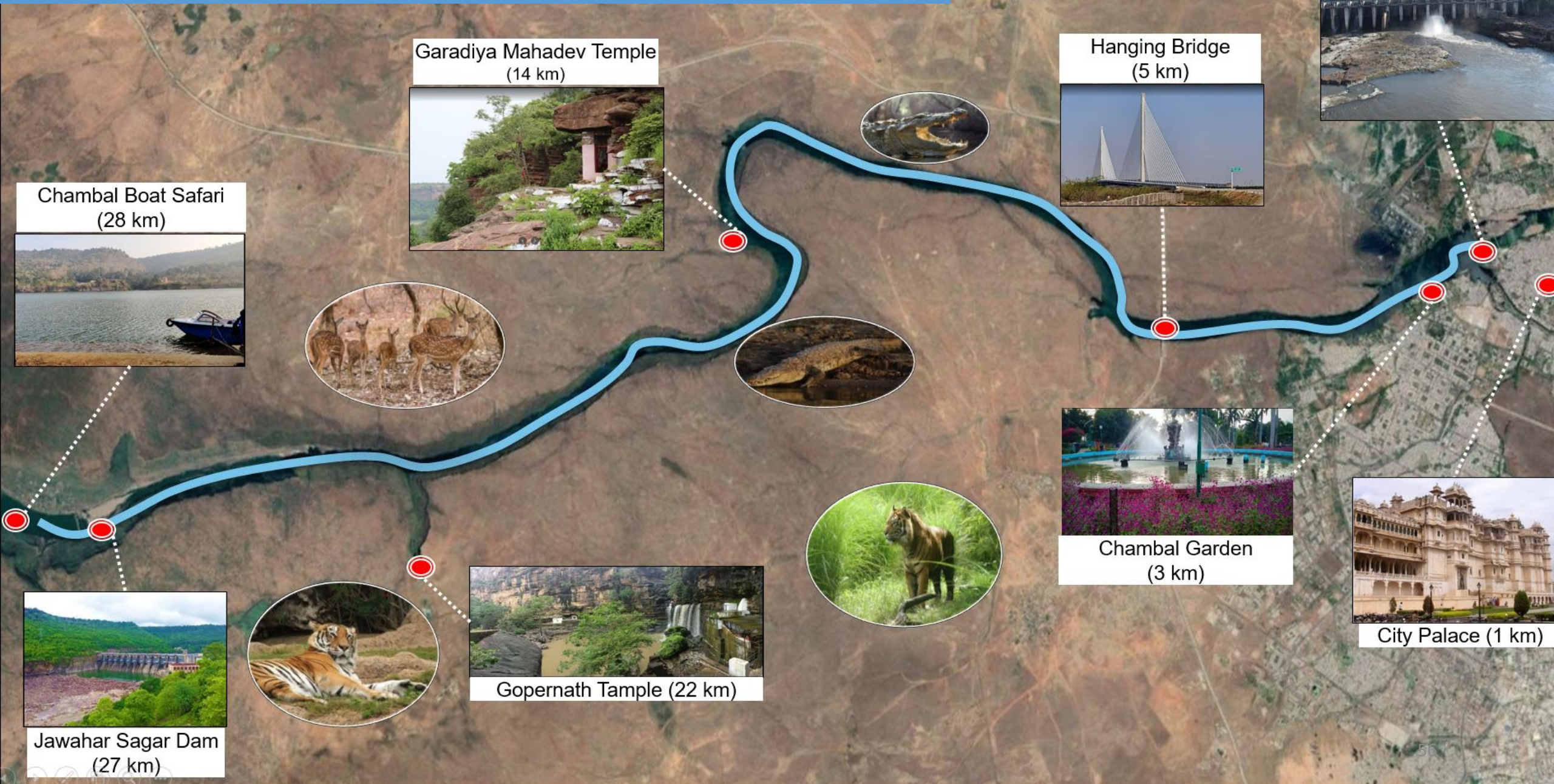


- MP - 320 km
- Raj - 226 km
- MP & Rajasthan(border) - 251 km
- UP - 32 km
- UP & MP (border) - 117 km



- ❖ Chambal River : 960km long.
- ❖ Biggest tributary of Yamuna rises in Vindhyan range near Mhow in Indore District of Madhya Pradesh
- ❖ Declared as National Waterway -24.
- ❖ Feasibility study done upto declared waterway of **60km** in UP from Chakarpura to Awari (river Yamuna joining point) in 2017

Major attractions near Kota on river Chambal



**PROPOSED TO BE TAKEN UP FOR
DEVELOPMENT**

❖ **Cruise Circuit:** Upstream Morjim – Colvale Dhargal Bridge on NW-25 (Chapora River), Goa- **PROPOSED FOR DEVELOPMENT**

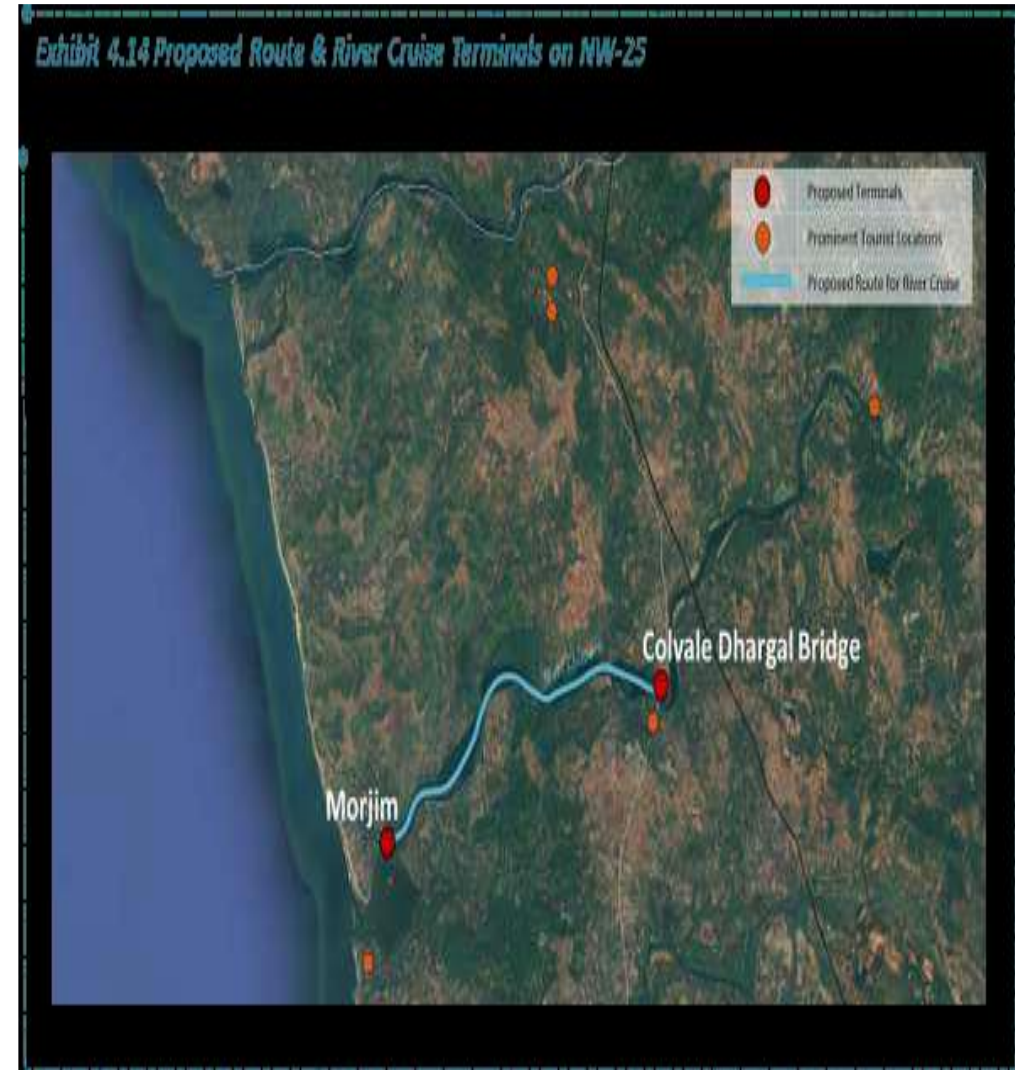
❖ **Category:** Budget River Cruise

❖ **States Covered:** Goa

❖ **Status:**

➤ 2 floating jetties in River Chapora(NW-25) for cruise tourism has been considered. The river cruise is proposed till Alorna Fort.

➤ 3 floating Jetties proposed on NW-88(Sal river)



❖ **Cruise Circuit:** Ashok Nagar – Thumbe Village on NW-43 (Gurupur River) & 74 (Netravathi River) – **PROPOSED FOR DEVELOPMENT**

❖ **Category:** Budget River Cruise

❖ **States Covered:** Karnataka

❖ **Status:**

- 3 pair (6 nos.) of jetties are proposed on existing route.
- Area is on the outskirts of city and the proposed area is near to New Mangalore Port.
- Thumbe on NW-74 (Netravathi river) considered as there are few resorts in vicinity.



**TO BE REASSESSED FOR
DEVELOPMENT**

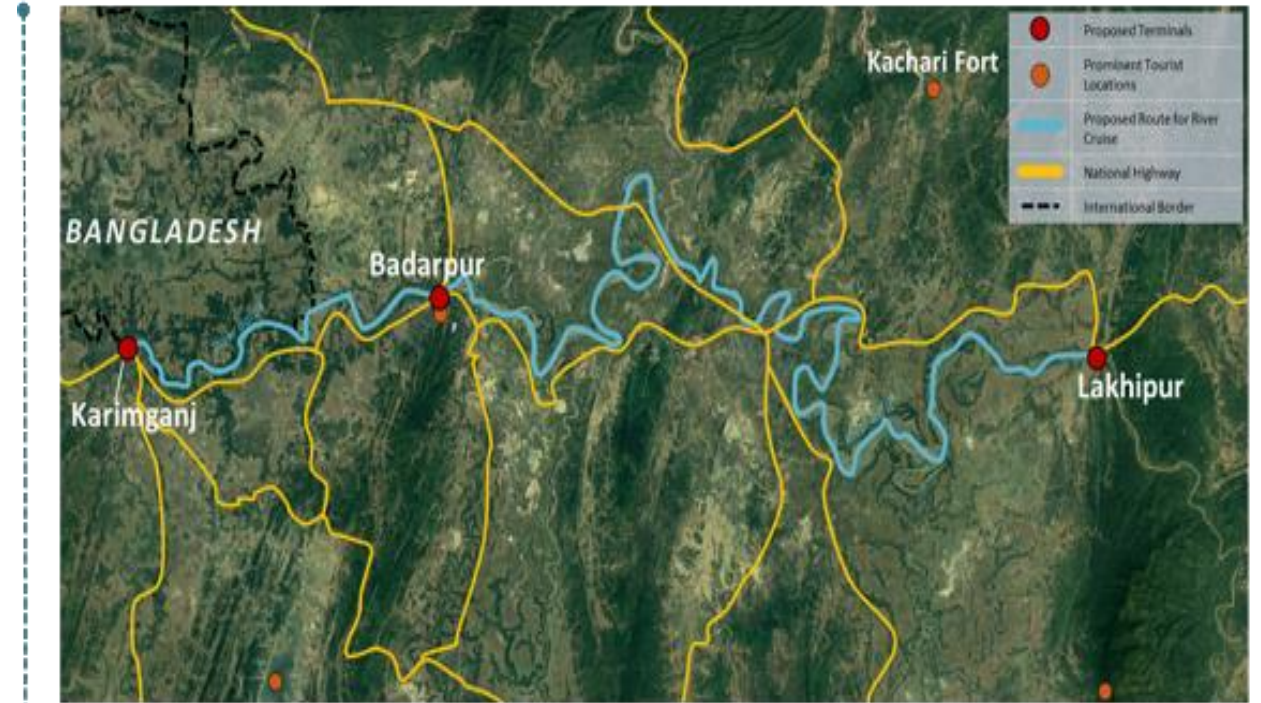
❖ **Cruise Circuit:** Lakhipur - Badarpur – Karimganj on NW-16 (Barak River) - **ACTION TO BE TAKEN FOR DEVELOPMENT**

❖ **Category:** Budget River Cruise

❖ **States Covered:** Assam

❖ **Status:** Feasibility to be re-assessed

Exhibit 4.13 Proposed Route & River Cruise Terminals on NW-16



❖ **Cruise Circuit:** Cortalim – Rassaim – Raia – Sanvordem on NW 111 (Zuari River): **TO BE RE-ASSESSED**

❖ **Category:** Budget River Cruise

❖ **States Covered:** Goa

❖ **Status:** The suggested area is dotted with Shipyards and there are no specific places of tourist interest in this region

Exhibit 4.21 Proposed Route & River Cruise Terminals on NW-111



**ADDITIONAL CRUISE CIRCUITS
CONSIDERED FOR DEVELOPMENT**

River Yamuna (NW110) Delhi - Sonia Vihar (Hanuman Temple) – Jagatpur (Shani Temple)– about 4 Km stretch for short ferry/cruise operations
IWT Development Proposed

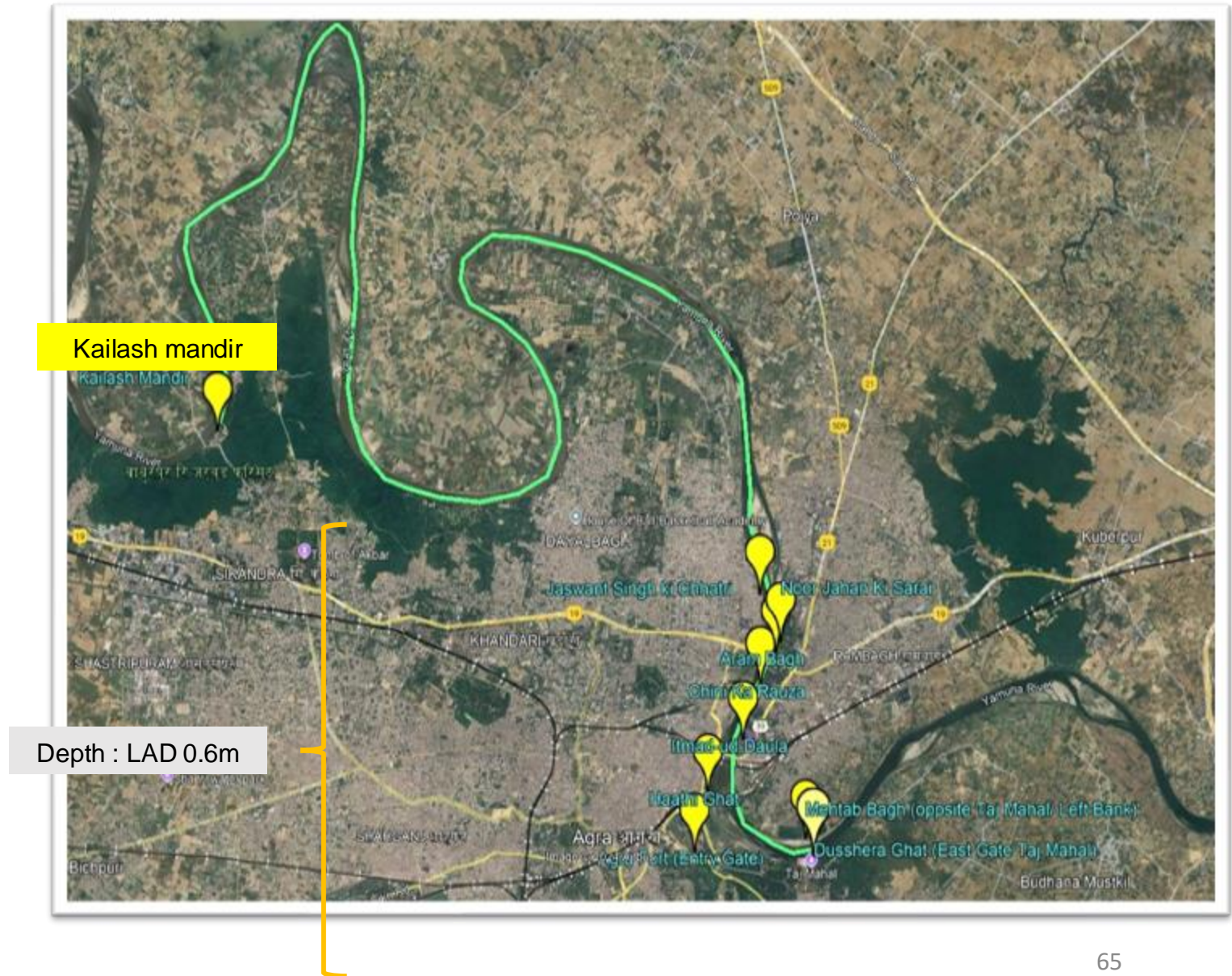
#	Intervention(s)	Key highlights	Impact
i.	2 HDPE jetties with shore facility	<ul style="list-style-type: none"> Capacity upto 50 people 	<ul style="list-style-type: none"> River Cruise Promotion Tourist attraction River Front Development Livelihood Promotion
ii.	2 Non-polluting cruise boats	<ul style="list-style-type: none"> Solar/Electric Hybrid Cruise Boats – Zero Emission Seating capacity 20-30 Pax Speed : 5-7 Knots 1.2 m (Maximum draft) 	
iii.	1 Charging station	<ul style="list-style-type: none"> Charging point 	
iv.	Navigational Aids	<ul style="list-style-type: none"> Earmarked channel for vessel movement 	

Taj Mahal to Kailash Mandir stretch – 42km

S. No.	Place/Site	Observations /Remarks
1	Taj Mahal (Dushara Ghat)	There is no ferry service available in this region as restricted by of the Archaeological Survey of India
2	Mehtab Bagh	Opposite to Taj Mahal, known as Taj View Point
3	Agra Fort (Hathi Ghat)	Place for pilgrims at Kali Mandir and Agra fort nearby.
4	Cheeni ka Rauza	General tourist spot
5	Noor Jahan ki Sarai	No tourism observed
6	Aram Bagh	General tourist spot
7	Itmad Ud Daulah	General tourist spot
8	Jaswant Singh Ki Chattri	No tourism observed
9	Kailash Mandir	Place for pilgrims at Mandir.

Technical parameters

1. Length of the stretch -42.00 Km (approx.)
2. Width- 200m-600m.
3. Depth- 0.60m to 3.0 m in lean season (approx)



Status of works

Floating Jetties - 06 steel jetties installed and 02 HDPE jetties by June, 2025

- a. **State Support Agreement (SSA)** - Signed by UP Govt. and submitted to MoPSW for vetting.
- b. **Fairway Maintenance** - Maintenance dredging
 - NIT issued on 15.11.2024.
 - Technical bid opened on 27.12.2024.
 - Award of work by 30.01.2025.
- c. **Onshore facilities** –To be developed by State Govt. Necessary details shared.
- d. Ferry operations as per Delhi model.

NEW CIRCUITS IDENTIFIED FOR DEVELOPMENT

STATE(S)	NAME OF NWS	RIVER CRUISE CIRCUITS
Andhra Pradesh	NW-79 (Pennar River)	Pavitra Sangamam local cruise
Andhra Pradesh, Telangana, Chhattisgarh, Karnataka, Tamil Nadu, Puduchery and Maharashtra	NW-4 {Godavari river (Bhadrachalam to Rajahmundry & Bhadrachalam - Nashik), Kakinada Canal (Kakinada to Rajahmundry), Eluru Canal (Rajahmundry to Vijayawada), Krishna river (Wazirabad to Vijayawada & Wazirabad - Galagali), Commamur Canal (Vijayawada to Peddaganjam), North & South Buckingham Canals and Marakanam to Puducherry through Kaluvelly tank	Mahabalipuram- Ediyur Bridge Cooum River-Marina Beach Pulicat Lake Kalpakkam- Palar River Almatti Dam to Herkal (Overnight) Narayanpur Dam Tarlaguda-Bhadrakali Kaleswaram Sreepada Yelampalli Sriramsagar Kopargaon Nanded Paithan
Andhra Pradesh & Karnataka, Telangana	NW-104 (Tungabhadra River)	Sunkesula Barrage
Gujarat	NW-66 (Mahi river)	Sindhort Dam -Kotna-Beach & Kadana Dam
	NW-87 (Sabarmati river)	Dholka-Vataman & U/s of Sant Sarovar Dam

NEW CIRCUITS IDENTIFIED FOR DEVELOPMENT

STATE(S)	NAME OF NWS	RIVER CRUISE CIRCUITS
Gujarat & Rajasthan	NW-48 (Jawai-Luni-Rann of Kutch River System)	Dholavira & Lakhpat Fort-Narayan Sarovar (MHA clearance is required)
Goa	NW-88 (Sal river)	Cavolossim-Betul Fort-Betul lighthouse
Jammu & Kashmir	NW-26 (Chenab river)	Reasi-Akhnoor
	NW-46 (Indus river)	Rambirpora-Karu
	NW-49 (Jhelum river)	Wular Lake to Pantha Chowk
Jharkhand	NW-56 (Kherkai river)	Connected with Jamshedpur(NW-96)
Kerala	NW-59 (Kottayam-Vaikom Canal)	Kumarakom
Kerala & Tamil Nadu	NW-13 (AVM Canal)	Poovar Lake
Karnataka	NW-41 (Ghataprabha River)	Included in Almatti Dam circuit
	NW-67 (Malaprabha river)	Badami Caves, Pattakadl & Aihole
	NW-76 {Panchagangavali (Panchagangoli) River}	Kodi backwaters
	NW-105 (Udayavara River)	Yadgir Fort

NEW CIRCUITS IDENTIFIED FOR DEVELOPMENT

STATE(S)	NAME OF NWS	RIVER CRUISE CIRCUITS
Maharashtra	NW-11 (Arunawati - Aran River System)	Chincholi Dam
	NW-53 (Kalyan-Thane-Mumbai Waterway, Vasai Creek and Ulhas River System)	Urban Transport connecting Navi Mumbai Airport
	NW-85 (Revadanda Creek - Kundalika River System)	Revadanda Fort
Maharashtra & Telangana	NW-70 (Manjara river)	Octopus Lake & Nizamsagar Dam
	NW-109 (Wainganga - Pranahita River System)	Sironcha- Kaleswaram
Odisha	NW-22 (Birupa - Badi Genguti - Brahmani River System)	Lalitgir-Udaigiri-Ratnagiri
	NW-23 (Budha Balanga)	Balasore-Hidden beach
	NW-64 (Mahanadi river)	Jobra
Odisha, Jharkhand & West Bengal	NW-96 (Subarnrekha River)	Pantei Ghat-Bhusandeswara-Bichitrapur Mangroves & Jamshedpur
Punjab & Himachal Pradesh	NW-17 (Beas river)	Religious circuits covering 4 gurudwaras
	NW-98 (Sutlej river)	Naina Devi-Tattapani & Kiratpur Sahib-Anandpur Sahib

NEW CIRCUITS IDENTIFIED FOR DEVELOPMENT

STATE(S)	NAME OF NWS	RIVER CRUISE CIRCUITS
Tamil Nadu	NW-20 (Bhawani river)	Sangameshwar
	NW-55 (Kaveri - Kollidam River System)	Chaidambaram-Pichavaram
	NW-75 (Palar river)	Already connected through Buckingham Canal
	NW-77 (Pazhyar river)	Manakudi
	NW-80 (Ponniyar river)	Cuddalore
	NW-99 (Tamaraparani River)	Punnaikayal and Tirunelveli
	NW-107 (Vaigai river)	Madurai
NWs in 24 States	35 NWs	47 new circuits

Cooperation required from State Government

- To share the State Tourism Policy.
- Consent for MoUs for promotion of river cruise tourism.
- Implement regulations and policies that facilitate smooth operations of cruise lines while ensuring safety and compliance with maritime laws. This includes environmental regulations, security protocols, and passenger handling procedures.
- Ensure the safety and security of cruise passengers through effective monitoring, enforcement of safety standards, and emergency response plans.
- Collaborate with tourism boards and other stakeholders to market and promote cruise tourism.
- Facilitate the availability of essential services such as customs, immigration, health inspections, and other logistical support to ensure a smooth experience for cruise operators and passengers
- Promote sustainable tourism practices within the cruise industry by encouraging the use of eco-friendly technologies, reducing environmental impact, and supporting community-based tourism initiatives.
- Identify routes and cruise circuits to promote local cultural heritage, traditions, and tourist attractions along the cruise routes to enhance the tourist experience.
- Partner with cruise operators to develop packages and shore excursions that emphasize cultural experiences, such as guided tours, local performances, and culinary experiences



Follow us:



iwai.nic.in



@IWAI_ShipMin



iwai_shipmin_india



IWAI_ShipMin



IWAI



@IWAI_ShipMin

LIST OF 38 RIVER CRUISE CIRCUITS

S.N.	National Waterway	Type	Proposed Routes
LUXURY RIVER CRUISE - 7			
1	NW 1	12 Nights / 13 Days	Kolkata - Varanasi
2	NW 2	10 Nights / 11 Days	Dhubri - Dibrugarh
3	NW 3	Nights / 11 Days	10 Kottappuram - Kollam
4	NW 97	4 Nights / 5 Days	Namkhana - Bhagabatpur - Sajnekhali - Hemnagar
6	NW 73*	5 Nights / 6 Days	Upstream SSD - Barwani
7	IBP	11 Nights / 12 Days	Kolkata - Dhaka

LIST OF 38 RIVER CRUISE CIRCUITS

S.N.	National Waterway	Type	Proposed Routes
BUDGET RIVER CRUISE-13			
8	NW 4	2 Nights / 3 Days	Srisailam - Nagarjun Dam
9	NW 5	2 Nights / 3 Days	Bhitarkarnika - Hukitola - Paradeep
10	NW 8	1 Night / 2 Days	Alappuzha - Changanessary
11	NW 9	1 Night / 2 Days	Alappuzha - Kodimatha
12	NW 16	3 Nights / 4 Days	Lakhipur - Badarpur - Karimganj
13	NW 25	1 Night / 2 Days	Morjim - Colvale Dhargal Bridge
14	NW 43 & 74	1 Night / 2 Days	Ashok Nagar - Thumbbe Village
15	NW 51	1 Night / 2 Days	Beechanahalli - Beeramballi
16	NW 52	1 Night / 2 Days	Karwar Port - Virje near Kadra Dam
17	NW 71	1 Night / 2 Days	Britona Jetty - Aldona Jetty
18	NW 90	1 Night / 2 Days	Honnavar Port - Gersoppa
19	NW 100	1 Night	Dumas - Old Surat Castle
20	NW 111	1 Night / 2 Days	Cortalim – Rassaim – Raia – Sanvordem

LIST OF 38 RIVER CRUISE CIRCUITS

S.N.	National Waterway	Type	Proposed Routes
LOCAL FERRY CRUISE-18			
21	NW 1	Day Cruise	Engineering College - Digha Bridge
22	NW 4	Day Cruise	Polavaram - Pochavaram
23	NW 4	Day Cruise	Srisaillam - Akkamahadevi Caves
24	NW 14	Day Cruise	Aradi - Nalitpatia - Khola
25	NW 24	Day Cruise	Kota Barrage - Jawahar Sagar Dam
26	NW 40	Day Cruise	Naya Ghat - Guptar Ghat
27	NW 42	Day Cruise	Pucca Bridge - Gomti Barrage
28	NW 47	Day Cruise	Mayapur - Kadamtala Ghat
29	NW 49	Day Cruise	Zero Bridge - Chattabal Weir
30	NW 53	Day Cruise	Gaimukh - Panju Island
31	NW 60	Day Cruise	Mukutmanipur- Banpukuria
32	NW 73	Floating Restaurant	Statue of Unity
33	NW 83	Day Cruise	Murud - Janjira - Padmagurg
34	NW 84	Day Cruise	Near Atal Setu - Ranjit Sagar Dam
35	NW 87	Day Cruise	Gandhi Bridge, Ahmedabad - Nehru Bridge, Ahmedabad
36	NW 89	Floating Restaurant	Harihareshwar
37	NW 110	Day Cruise	Vishram Ghat, Mathura - Keshi Ghat, Mathura
38	Chilika Lake	Day Cruise	Barkul - Kalijai - Nalaban - Nairi - Satapada

S.N.	OPERATIONAL RIVER CRUISE CIRCUITS
1	KOLKATA - VARANASI ON NW-1
2	DHUBRI – DIBRUGARH ON NW-2
3	KOTTAPPURAM – KOLLAM ON NW-3
4	TOURISM JETTY PATTO – CHORAO ISLAND – OLD GOA – DIVAR ISLAND – TOLTO FERRY GHAT – CORTALIM ON NW-27 AND NW-68
5	NAMKHANA - BHAGABATPUR - SAJNEKHALI – HEMNAGAR ON NW-97
6	KOLKATA – BALI ISLAND ON IBP ROUTE
7	BHITIRKANIKA-HUKITOLA-PARADIP ON NW-5
8	ALAPUZHA AND CHANGANASSERY ON NW-8
9	ALAPUZHA AND KOTTAYAM (KODIMATHA – PALLOM) ON NW-9
10	ENGINEERING COLLEGE - DIGHA BRIDGE, PATNA ON NW-1 (RIVER GANGA)
11	ARADI - NALITPATIA - KHOLA ON NW-14
12	MAYAPUR - KADAMTALA GHAT ON NW-47
13	STATUE OF UNITY ON NW-73
14	GANDHI BRIDGE – NEHRU BRIDGE, AHMEDABAD ON NW-87
15	BARKUL - KALIJAI - NALABAN - NAIRI – SATAPADA ON CHILIKA LAKE (OUTSIDE NATIONAL WATERWAYS)



S.N.	DEVELOPMENT IN PROGRESS
1	Upstream Sardar Sarovar Dam- Barwani on NW-73 (River Narmada)
2	Nagarjuna Sagar Dam on NW-4
3	Beechanahalli – Beeramballi on NW-51
4	Karwar Port – Virje near Kadra Dam on NW-52
5	Honnavar Port – Gersopa on NW-90
6	Dumas – Old Surat Castle on NW 100
7	Pollavaram-Pochavaram on NW-4
8	Srisailam – Akkamahadevi Caves on NW-4
9	Naya Ghat - Guptar Ghat on NW-40 (River Ghaghra)
10	Zero bridge – Chattabal weir on NW-49
11	Gaimukh – Panju Island on NW-53
12	Murud – Janjira – Padmagurg on NW-83
13	Vishram Ghat, Mathura - Keshi Ghat, Mathura on NW-110 (Yamuna River)

S.N.	ACTION TO BE TAKEN UP FOR DEVELOPMENT
1	Britona Jetty – Aldona Jetty on NW-71
2	Pucca Bridge - Gomti Barrage on NW-42 (Gomati River)
3	Mukutmanipur – Banpukurtia on NW- 60
4	Near Atal Setu – Ranjit Sagar Dam on NW-84
5	Harihareshwar on NW-89
6	Kota Barrage – Jawahar Sagar Dam on River Chambal (Outside National Waterways)
7	Upstream Morjim – Colvale Dhargal Bridge on NW-25
8	Ashok Nagar – Thumbe Village on NW-43 & 74

S.N.	TO BE RE-ASSESSED
------	-------------------

1	Cortalim – Rassaim – Raia – Sanvordem on NW 111
---	---

2	Lakhipur - Badarpur – Karimganj on NW-16
---	--

Cruise operations on National Waterways 1

River Cruises plying on NW-1



Infrastructure Development

- Construction of 60 community jetties under JMVP- 49 already completed
- Cruise terminal at Varanasi & other terminals at Patna, Sahibganj, Kalughat, Kolkata.

Vessels Operators

Cruise Vessels

<ul style="list-style-type: none"> ▪ The Assam Bengal Navigation Co 	<ul style="list-style-type: none"> ▪ ABN Rajmahal ▪ ABN Sukapa*
<ul style="list-style-type: none"> ▪ Vivada Waterways 	<ul style="list-style-type: none"> ▪ MV Millennium ▪ MV Paramhansa ▪ MV Matsyakanya ▪ MV The Auspicious ▪ MV Jaladuta
<ul style="list-style-type: none"> ▪ Heritage River Journeys Pvt. Ltd 	<ul style="list-style-type: none"> ▪ MV Ganga Vilas* ▪ MV Ganges Voyager-I ▪ MV Ganges Voyager-II ▪ RV Bengal Ganga

* vessels operates on more than one NWs

Cruise operations on National Waterways 2

River Cruises plying on NW-2



MV Mahabaahu



ABN Charaidew I

ABN Charaidew II

Infrastructure Development

- **10 Passenger terminals by IWAI and 4 terminals through financial assistance from Ministry of Tourism**

Vessels Operators

Cruise Vessels

- | | |
|---|--|
| <ul style="list-style-type: none"> ▪ Adventure Resort & Cruises ▪ The Assam Bengal Navigation Co | <ul style="list-style-type: none"> ▪ MV Mahabaahu ▪ Charaidew-I ▪ Charaidew-II* ▪ MV Sukapha* |
| <ul style="list-style-type: none"> ▪ Jungle Travels India Pvt. Ltd | <ul style="list-style-type: none"> ▪ MV Rudra Singha-I ▪ MV Rudra Singha-II |
| <ul style="list-style-type: none"> ▪ Pandaw Cruises & Pvt. Ltd ▪ Heritage River Journeys Pvt. Ltd ▪ Brahmaputra Cruise Pvt. Ltd ▪ Brahmaputra Pearls ▪ Bogibeel Eco Tourism Enterprise ▪ Jolporee Tour & Travel ▪ Sofia Navigation Cruises Pvt. Ltd. ▪ S. B. OM | <ul style="list-style-type: none"> ▪ RV KINDAT PANDAW* ▪ MV Ganga Vilas* ▪ MV Manashputra ▪ MV Mukuta ▪ MV Kanchanjangha ▪ MV Jolporee ▪ MV Kohuwa Bon ▪ M.B OMM |

* vessels operates on more than one NWs

Cruise operations on National Waterways 3 & 8

River Cruise plying on NW-3 & 8



Infrastructure Development

- Thanneermukkom lock gate is operational
- Kerala State irrigation department is widening the Thrikkunnappuzha lock gate
- River cruise movement from Kochi to Kollam will be possible once both the lock gates in NW-3 are operational.

Vessels Operators

- Adventure Resort & Cruises

Cruise Vessels

- MV Vaikom

Cruise operations on National Waterways 97

River Cruises plying on NW-97



Infrastructure Development

- 10 tourist jetties have been constructed by State Government in Sundarbans

Vessel Operators

- Heritage River Journeys Private Ltd.
- Pandaw Cruises & Pvt. Ltd.
- The Assam Bengal Navigation Co
- MK Shipping/Kanishka Shipping

Cruise Vessels

- MV Ganga Vilas*
- RV KINDAT PANDAW*
- MV Charaidew-II*
- MV Razarhat-C BD Flag Tourist Vessel

* vessels operates on more than one NWS

Cruise operations on Indo-Bangla Protocol Route

River Cruises plying on IBP Route



RV Kindat Pandaw

ABN Charaidew II



Ganga Vilas

Cruise Vessels

- Cruise tourism on IBP Route commenced in March 2019 when RV Bengal Ganga was flagged-off from Kolkata and MV Madhumati flagged-off from Dhaka.
- World's longest river Cruise, MV Ganga Vilas from Varanasi to Dhibrugarh launched in Jan 2023.
- 14 cruise voyages has been performed so far.
- Customs and Immigration: SOP in place.

Vessel Operators

- Heritage River Journeys Private Ltd.
- Pandaw Cruises & Pvt. Ltd.
- The Assam Bengal Navigation Co
- MK Shipping/Kanishka Shipping

Cruise Vessels

- MV Ganga Vilas*
- RV KINDAT PANDAW*
- MV Charaidew-II*
- MV Razarhat-C BD Flag Tourist Vessel

* vessels operates on more than one NWS