



# **BULK MATERIALS TRADED WORLDWIDE**

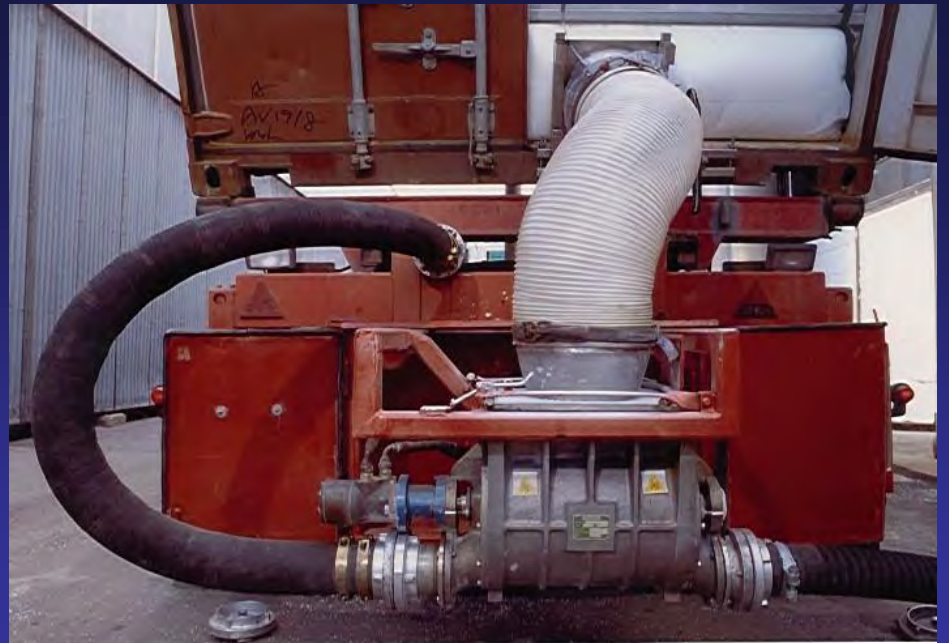
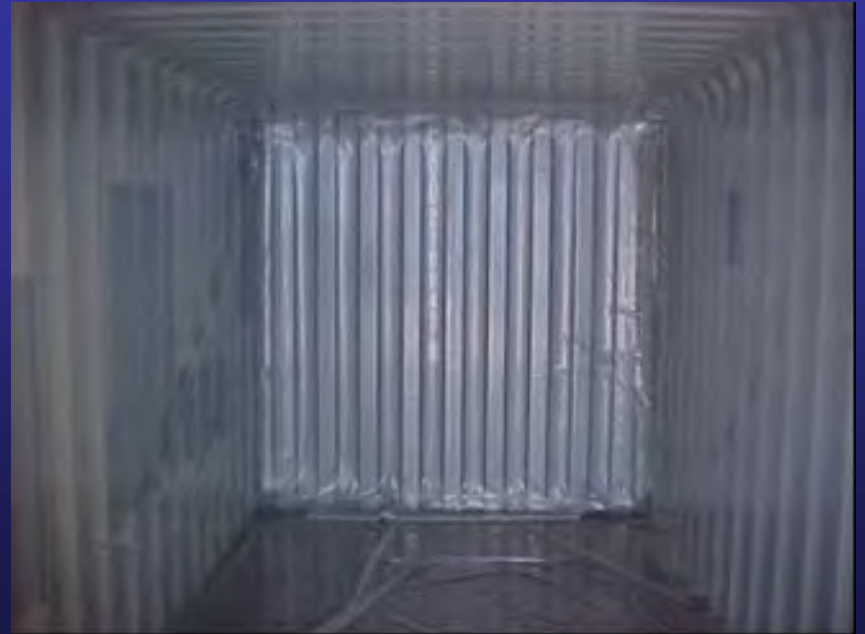
- **Grain**
- **Iron ore**
- **Cement**
- **Coal**
- **Copper concentrate**
- **Malt**
- **Soya bean meal**
- **Urea**
- **Soda ash**
- **Alumina**
- **Maize**
- **Flour**
- **Fishmeal**
- **Phosphates**
- **Polyethylene**
- **Sand**
- **Soyabean**
- **Rice**
- **Coffee beans**
- **Dolomites**
- **Polypropylene**
- **Pulverized coal**
- **Peas**
- **White sugar**
- **Bone powders**
- **Limestone**
- **PVC**
- **Fly Ash**
- **Rape Seed**
- **Meat Powder**
- **Quicklime**
- **Muriate of potash**
- **China clay**
- **Mustard Seed**
- **Cocoa beans**
- **Gypsum**
- **Sunflower Seed**
- **Clay**
- **Sodium sulphate**
- **Coal tar pitch**
- **Carbon Black**
- **Petro Coke**
- **Wood chips**

# LINERED CONTAINERS FOR BULK MATERIALS ROAD TRANSPORT



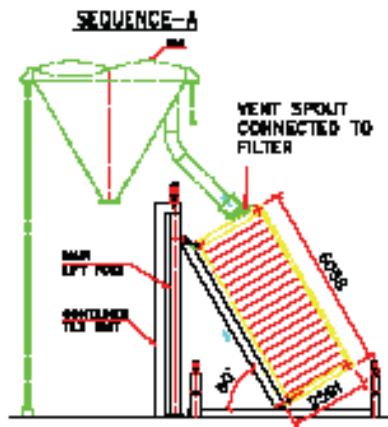






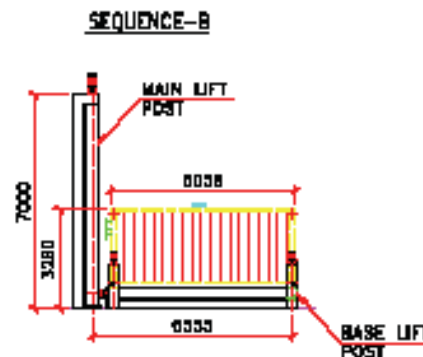
# LINERED CONTAINER FILLING AND DISCHARGE SEQUENCE

| REF | ZONE | DESCRIPTION    | EF  | GRD | NOTE      |
|-----|------|----------------|-----|-----|-----------|
| △   | -    | GENERAL ACTION | ▲/▲ | BLT | BLT/CS/FS |

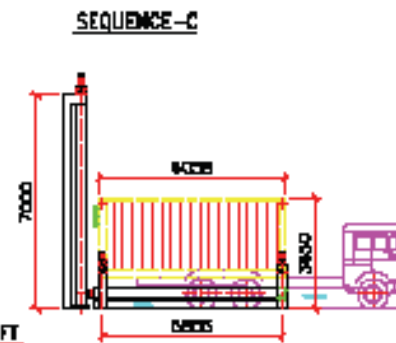


**FILLING SEQUENCE (SUPPLIER PREMISES)**

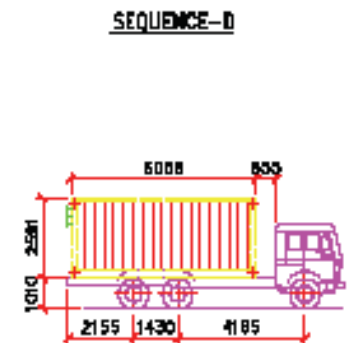
1. CONTAINER WITH LINER TILTED TO REQUIRED ANGLE IN CTU (CONTAINER TILT UNIT)
2. SILO PIPE CONNECTED



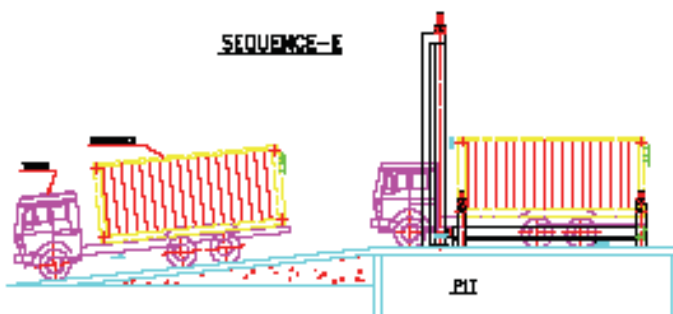
**3. CONTAINER LOADED**



4. TRUCK BACKS UP BELOW CONTAINER
5. CONTAINER LOWERED FURTHER AND LOCKED ON TRUCK

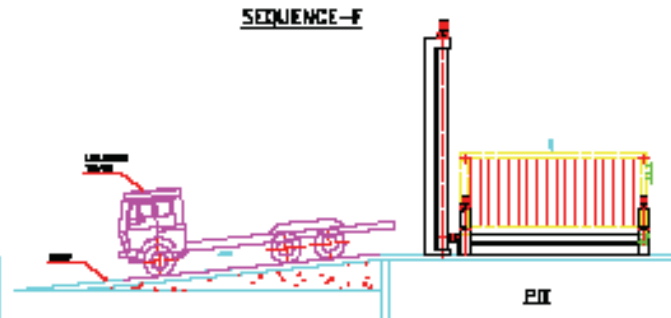


**6. TRUCK DRIVEN TO DESTINATION**

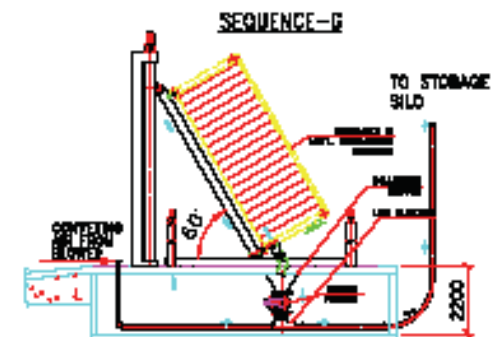


**DISCHARGE SEQUENCE (USER PREMISES)**

7. TRUCK BACKS UP ON RAMP TO CTU
- PINS OF BASE LIFT POSTS ENGAGE CONTAINER AND LIFT OFF TRUCK BASE

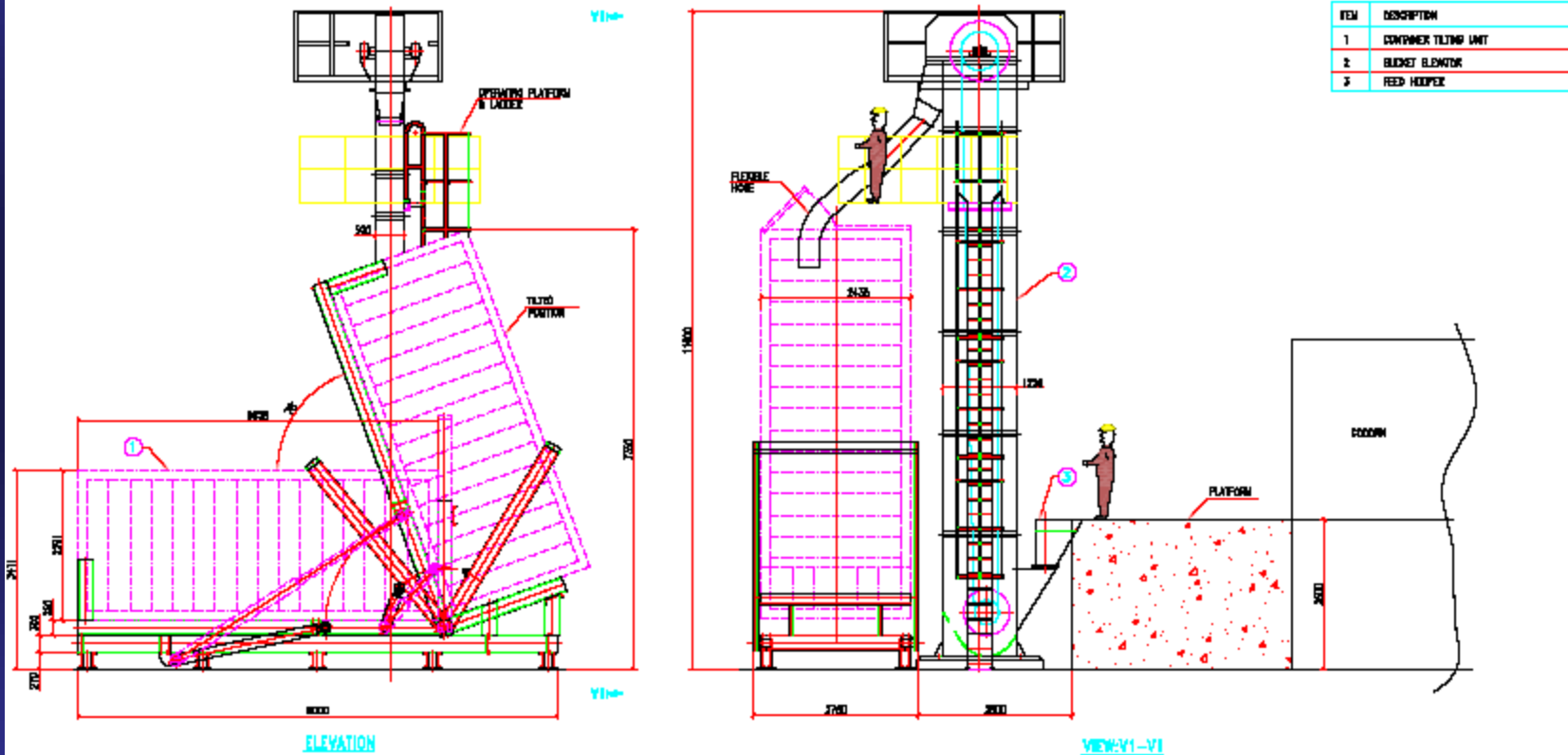


8. EMPTY TRUCK DRIVES AWAY
9. CONTAINER LOWERED AND LOCKED ON CTU BASE



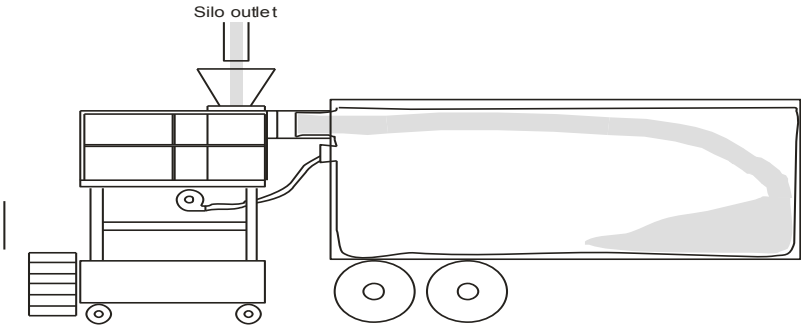
10. CONTAINER TILTED WITH REAR SIDE (EMPTYING SIDE) FACING DOWN. BULKHEAD SPOUTS CONNECTED TO PNEUMATIC CONVEYING SYSTEM

# CONTAINER FILLING SYSTEM FOR DRY BULK

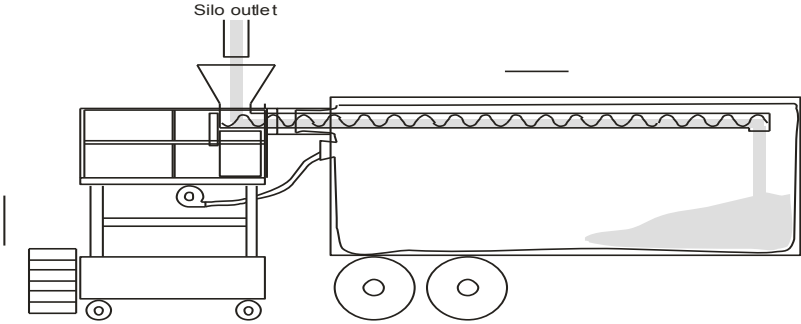


# FILLING OF CONTAINER

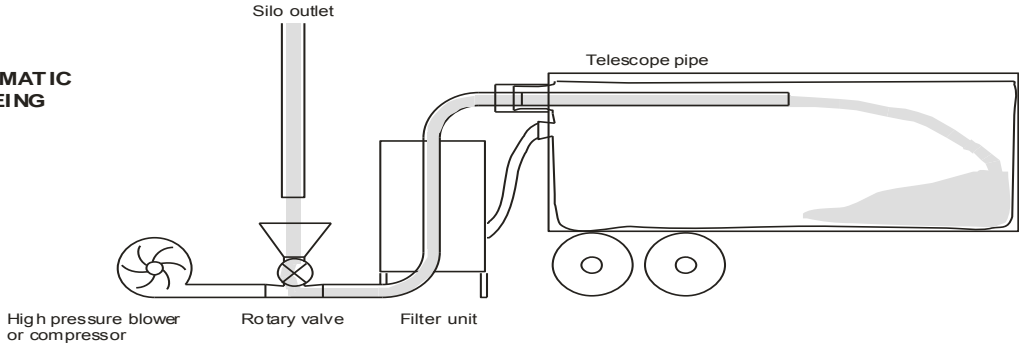
## 1. BELT THROWER Granules



## 2. AUGER Powder



## 3. PNEUMATIC CONVEYING











27/8/2009 17:07









**THANK YOU FOR YOUR  
PATIENCE**